



TECHGEN METALS
LIMITED

COMPANY PRESENTATION

July 2025 – ASX: TG1

Photo: Mt Baggala project - WA



Corporate Snapshot

158.6m

Shares on Issue

\$3.65m

Market Cap
(as at 23 July 2025)

\$0.8m

Cash at bank
(June 30 2025 - unaudited)

25.9m unquoted

12.7m quoted

Options on Issue

9.4m

Performance Rights on Issue

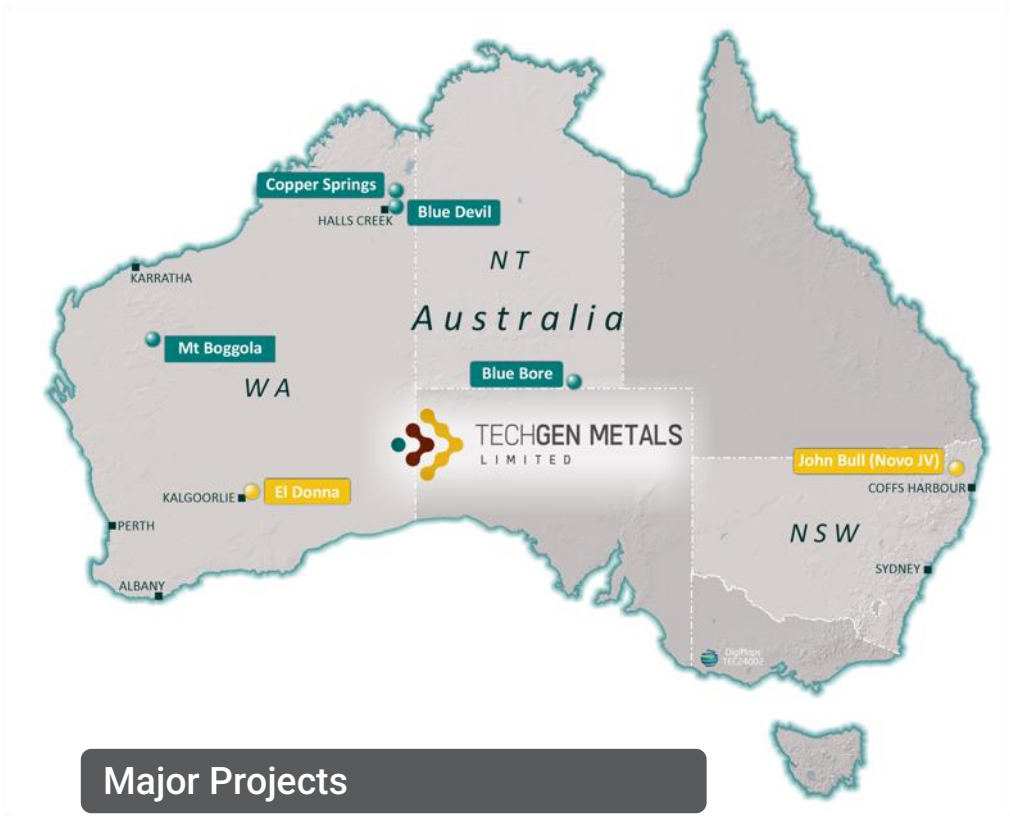
Shareholder Distribution



TG1 Management

Top 20 Shareholders

Others



Major Projects

BLUE DEVIL	COPPER – GOLD – SILVER
MT BOGGOLA	COPPER – GOLD – ANTIMONY
EL DONNA	GOLD
BLUE BORE	COPPER
JOHN BULL – JV NOVO	GOLD



Board & Management



ASHLEY HOOD
MANAGING DIRECTOR

- Exploration and corporate experience of more than 20 years in the mining and exploration industry with junior and major mining companies, listing several ASX exploration companies.
- Specialises in project and people management, native title negotiations, project due diligence, acquisitions and has a portfolio of family held mineral and precious metals projects.
- Board Senior Executive ASX experience, Currently Non-Executive Director Westar Resources (ASX: WSR).



MAJA MCGUIRE
NON-EXECUTIVE CHAIR

- Experienced corporate executive and company director, bringing 15 years' experience at board and senior management level. Holds LLB and BComm qualifications from the University of Western Australia.
- Experience includes working with listed companies as a non-executive chair/director, general counsel (ASX:AVR, ASX:AJX) and in top-tier legal private practice (Clayton Utz).
- Currently Non-Executive Director of Kuniko Ltd (ASX:KNI), Indiana Resources Ltd (ASX:IDA), & LTR Pharma Ltd (ASX:LTP).



ANDREW JONES
EXECUTIVE DIRECTOR

- More than 20 years' experience as a geologist, having worked throughout Australia, Africa and South America.
- Holds a B.App.Sci degree from RMIT University and Honors and MSc degrees from the University of Tasmania.
- Specialises in gold, copper, nickel and cobalt. Member of both the Australian Institute of Geoscientists (AIG) and the Australasian Institute of Mining and Metallurgy (AusIMM).



AIDA TABAKOVIC
COMPANY SECRETARY

- Appointed as the Company Secretary of the Company on 1 December 2022.
- Holds a Double Major Degree in Accounting and Finance and a Postgraduate Degree in Business Law.
- Over 15 years' experience in corporate accounting and reporting and financial management, as well as having number of years' experience across secretarial and corporate compliance reporting of both ASX listed and unlisted companies.
- Involved in listing a number of junior exploration companies on the ASX and is currently Company Secretary for numerous ASX listed companies.

Technical Advisory Board



CARL SWENSSON
GEOLOGIST

- Fellow of the AIMM, a member of Society of Economic Geologists and a Qualified Person under Canadian Instrument NI43-101.
- Over 40 years of experience in mineral exploration and resource assessment.
- In-field experience in most commodities and deposit styles for gold, base metals, tin, tungsten, lithium, uranium, diamonds, coal and graphite across varied geological environments from Archean to Pliocene.
- Experience with both multinational and junior companies including as Chief Exploration Geologist for Normandy Mining Pty Ltd.
- Instrumental in starting several junior exploration companies in Australia and Canada and served on the Boards of a number of companies with extensive Australian and international experience having worked in Brazil, Chile, Peru, Canada, USA, Indonesia, Cambodia, Turkey, Greece and Tanzania.



RUSSELL MORTIMER
GEOPHYSIST

- Experienced in the application of geophysical techniques in mineral exploration for gold, platinum group elements (PGE's) and a broad range of base metals including, iron ore, nickel, copper, manganese, graphite as well as mineral sands and uranium.
- Experienced in geophysical exploration for nickel/copper sulphides and other base metals and is directly responsible for a number of well renowned geophysical discoveries.



PETER SPITALNY
GEOLOGIST

- Senior exploration experience spans 30 years' exploration experience, focused upon gold and expert in lithium pegmatites. Has significant experience with manganese, nickel, copper.
- Member of the AusIMM and has acted for several publicly listed companies as a Competent Person, as defined by the JORC Code (2012). Has held board positions in public companies.



PETER PEEBLES
GEOLOGIST

- Senior geologist with over 36 years' experience, largely working in Australia, Africa, Europe, and China.
- Specialising in Gold, manganese/iron, base metals including nickel, copper lead and zinc, and industrial metals based in China.
- Multiple ASX board and exploration management positions.



Short Term Price Catalysts

- 01** Blue Devil - Copper, Gold, Silver – Heritage Survey 30th July 2025, EM targets.
- 02** Mt Boggola - Copper, Gold, Antimony - Heritage Survey Q3-4 2025, IP targets MB1 & MB2.
- 03** Inaugural Diamond/RC drilling at Blue Devil – 2.75km EM target.
- 04** RC drilling at Mt Boggola - IP targets MB1 & MB2.
- 05** Novo managing Phase 3 drilling at John Bull Gold Project, NSW.
- 06** RC drilling gold targets El Donna WA – Q3 2025.



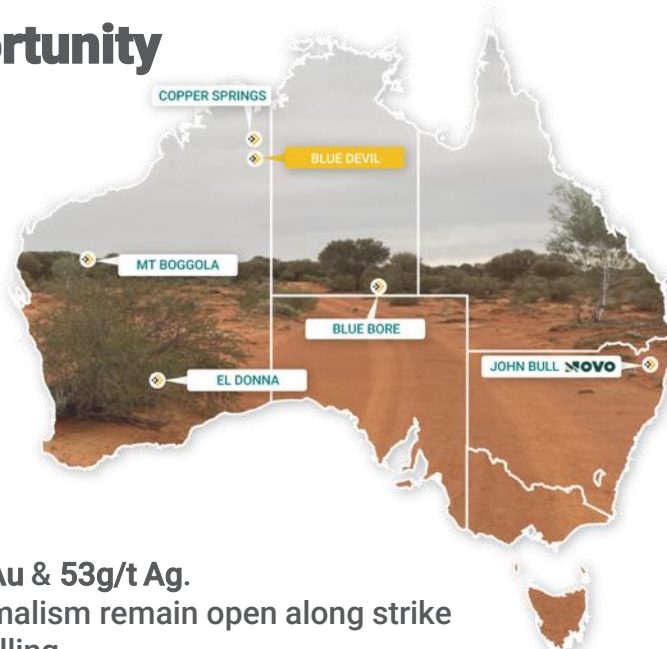


Kimberley – Blue Devil | Cu-Au-Ag

Large Scale Cu/Au/Ag Opportunity

Massive EM Conductors

- Airborne EM 12.5Hz (TargetEM) delivered an outstanding and large bedrock conductor at approximately ~200m depth & 2.75km long, the anomaly is broken into three zones (BDW, BDE & BDN).



Surface Mineralisation

- Rock chip peak values of 50.5% Cu, 18.5g/t Au & 53g/t Ag.
- Areas of Cu-Au stream, soil & rock chip anomalism remain open along strike and previously untested by geophysics or drilling.
- Expert geochemistry modelling element associations suggest potential for intrusion-related, sediment hosted and or VMS style Cu-Au mineralisation across the project.

Location

- In the world-class mineral province of the Halls Creek Orogen. The project is located 40km northeast of Halls Creek covering an area of 187km².
- 60km from the Great Northern Highway and 550km From the Port of Derby.

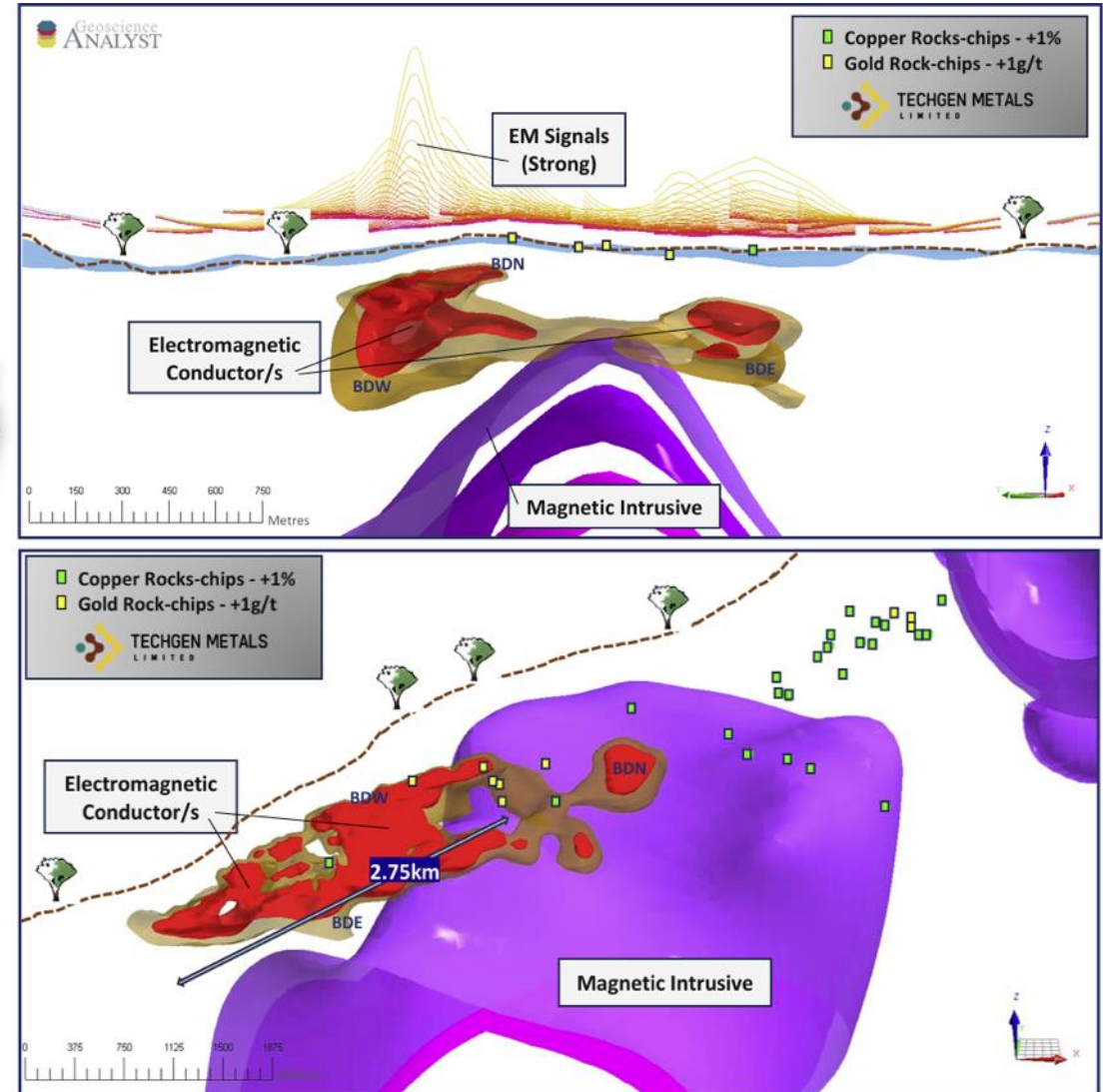


Figure 1 & 2: Airborne EM 12.5Hz (TargetEM) 3D modelling.

Kimberley – Blue Devil | Cu-Au-Ag

Large Scale Cu/Au/Ag Opportunity

- Airborne EM 12.5Hz airborne EM (TargetEM): The 12.5Hz EM system delivered an outstanding and large bedrock conductor at approximately ~200m depth, the anomaly is broken into three zones (BDW, BDE & BDN).
- BDW = Western, +2.5km long strong anomaly, with a thicker conductive source. Steep westerly dipping, wrapping around a broad/deep level magnetic intrusive body with local NE structural control.
- BDE = Eastern, +1.5km strong anomaly – with a deeper level or a thicker conductive source. Wrapping around a broad/deep level intrusive magnetic body with local ENE structural splay fault.
- BDN = Northern, +300m strong anomaly within broader conductive complex. Also wrapping around a broad/deep level magnetic intrusive body, with local NE structural control.
- Airborne Magnetics: A significant localised intrusive magnetic feature, has been modelled approximately ~100-400m immediately below the EM conductor plates (BDW, BDE & BDN). The magnetic intrusion may be a source for mineralising fluids and several significant mineral deposit styles are related to intrusions.
- Copper, gold and silver bearing iron-rich units (gossans) and quartz veins have previously been mapped across the project area. Encouraging previous rock chip samples above or in very close proximity to the EM conductors when they are projected to surface include 12.3% & 5.81% Cu and 6.07g/t, 5.78g/t, 3.0g/t, 3.12g/t & 1.28g/t Au (Sipa).
- A significant first mover advantage: The first ever EM survey at Blue Devil and the first ever 12.5Hz TargetEM system flown in Australia. Airborne EM is well suited to identifying massive sulphide occurrences.
- Several major faults run through the project area (Figure 3). The EM conductors appear to be coincident with major faults. The magnetic anomaly sits between two major faults. The structural setting is favourable for producing potential mineralisation sites.
- Heritage Protection Approval agreement in place, on country Heritage survey booked 30th July 2025.

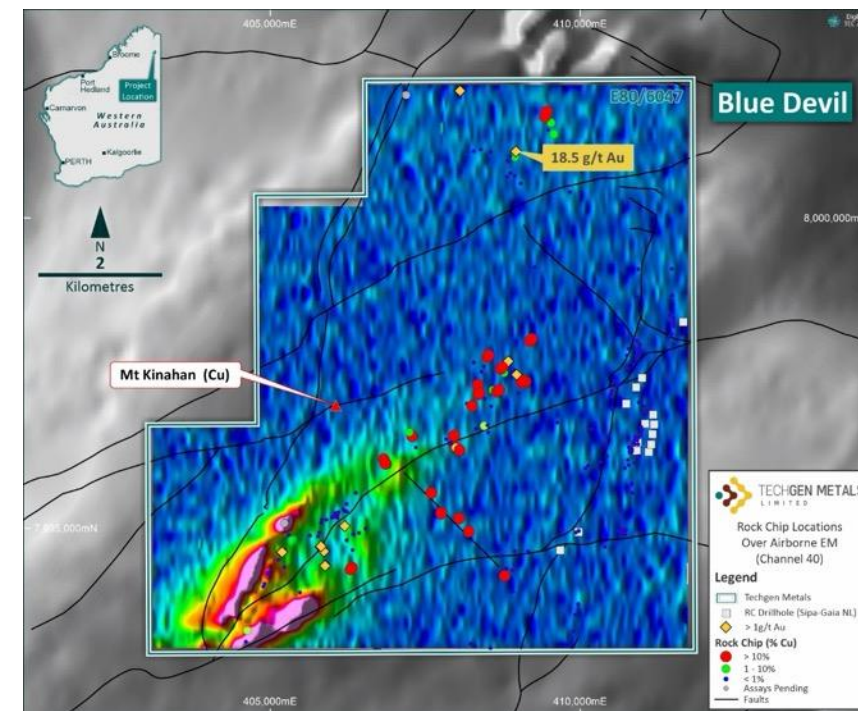


Figure 3: Rock chip sample locations on Channel 40 late-time TargetEM data highlighting conductors in southwest area.

COPPER		GOLD		SILVER	
Sample ID	Cu %	Sample ID	Au g/t	Sample ID	Ag g/t
KIA026	50.5	BDR001	18.5	126125	84
131838	47.3	131841	6.94	128073	52.5
131837	39.4	131207	6.07	131837	46.5
303879	38.4	131597	5.78	KIA007	38
131229	36.3	KIA029	4.51	128023	24.5
KIA020	34.3	132375	3.12	128029	20.5
KIA003	33.6	131847	3	131205	17.6
131822	31.6	131839	2.87	303879	15.9
KIA007	31.5	132371	2.3	131823	13.5
131227	31.2	131845	1.28	KIA019	12



Ashburton - Mt Boggola | Cu-Au-Sb-Fe

New IP @ Northern Star Target

Location

- The Mt Boggola Project is located ~60km to the south of Paraburdoo within the Ashburton Region of WA. The project comprises two Exploration Licences covering 179km² of highly prospective geology.

Mineralisation

- Northern Star Soil Anomaly: Rock chip sampling has returned peak values of 48.8g/t gold, 27.8% copper, 3.92% antimony, 3.72% lead & 49.3% iron.
- The Northern Star Soil Anomaly covers an area of approximately 1 km x 1 km, defined by copper, gold, lead and arsenic soil anomalism identified in historic sampling.
- Quartz veins, quartz breccias, and gossanous outcrops bearing iron and malachite are present within the anomaly area, alongside a significant northeast-southwest striking fault zone.

Next Steps

- Heritage survey Q3 2025.
- RC drilling Q4 2025.

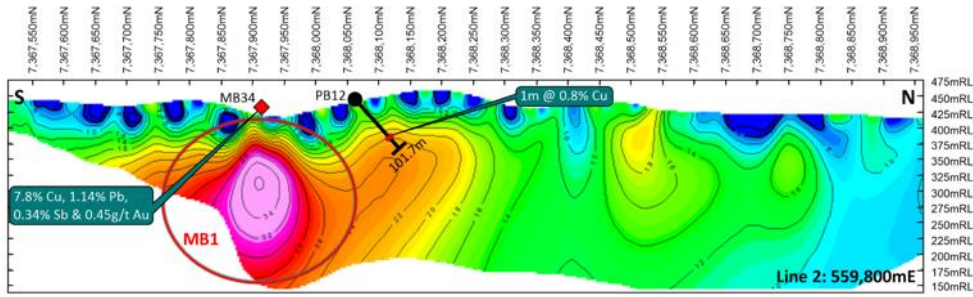
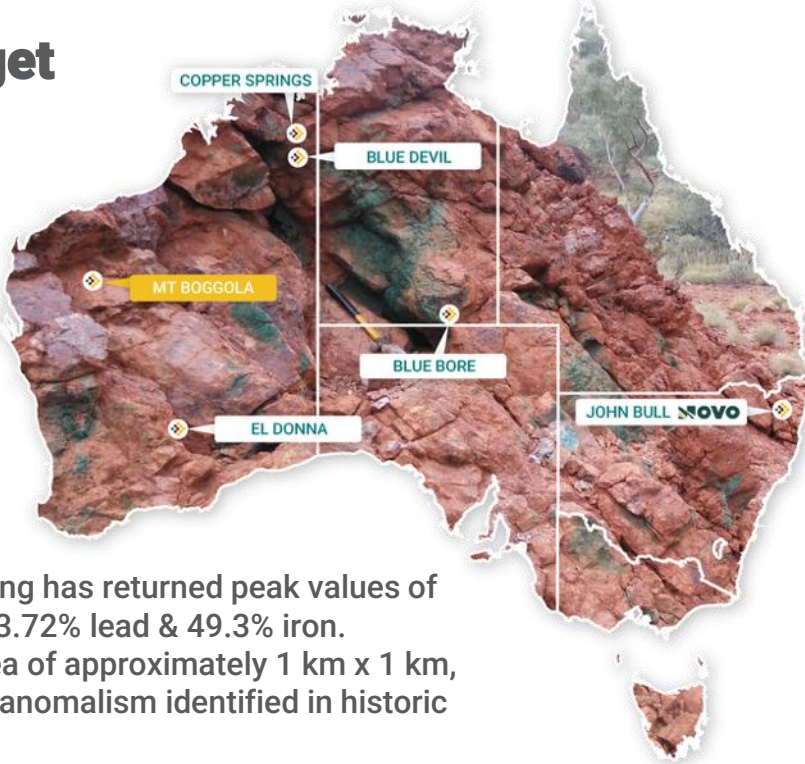


Figure 4: Dipole – Dipole IP Chargeability results Line 2 with red diamond being >1% Cu rock chips.

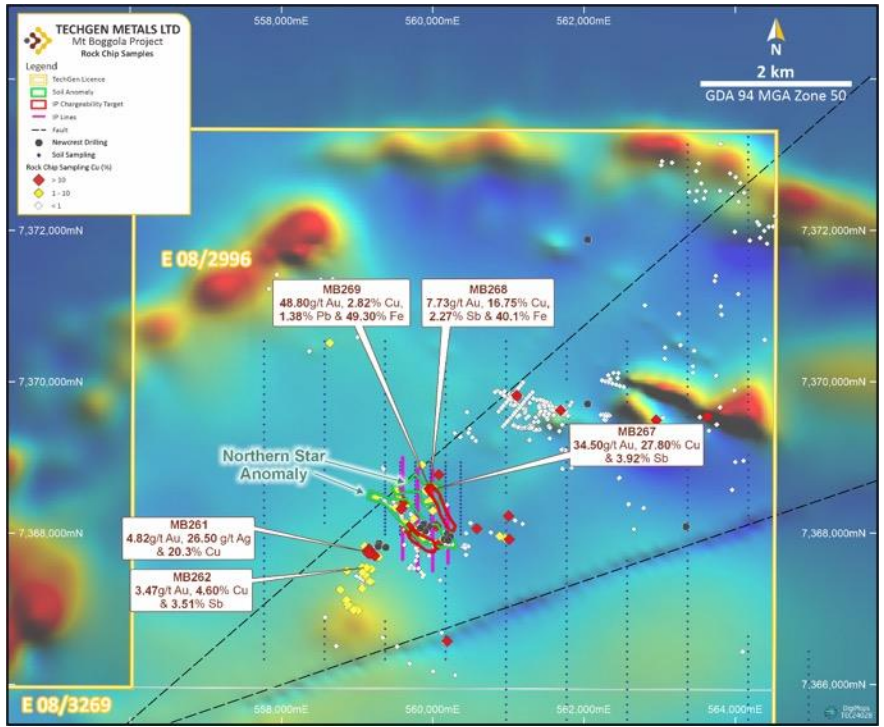
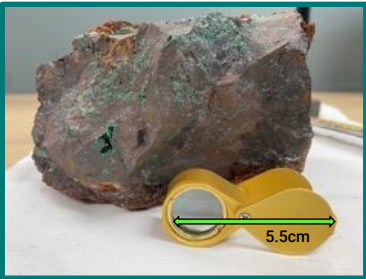


Figure 5: Location of IP lines, soils, rock chips & previous drilling, Mt Boggola Project.



MB268 (16.75% Cu – 7.73g/t Au – 40.1% Fe – 2.27% Sb)

MB34 (7.8% Cu, 1.1% Pb, 0.34% Sb & 0.45 g/t Au)

MB24 (26.6% Cu & 0.8 g/t Au)

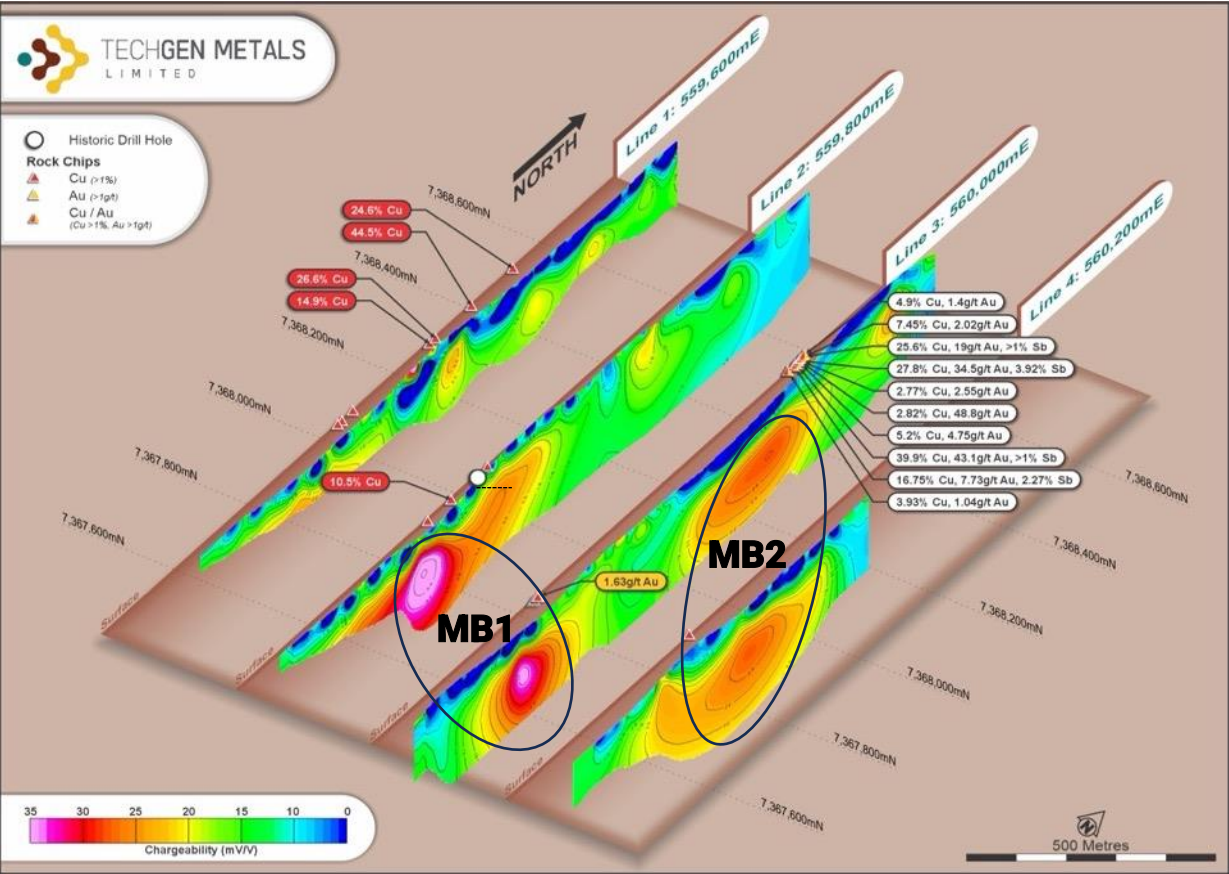


Figure 6: Chargeability IP lines, with surface rock chip assays Mt Boggola Project.

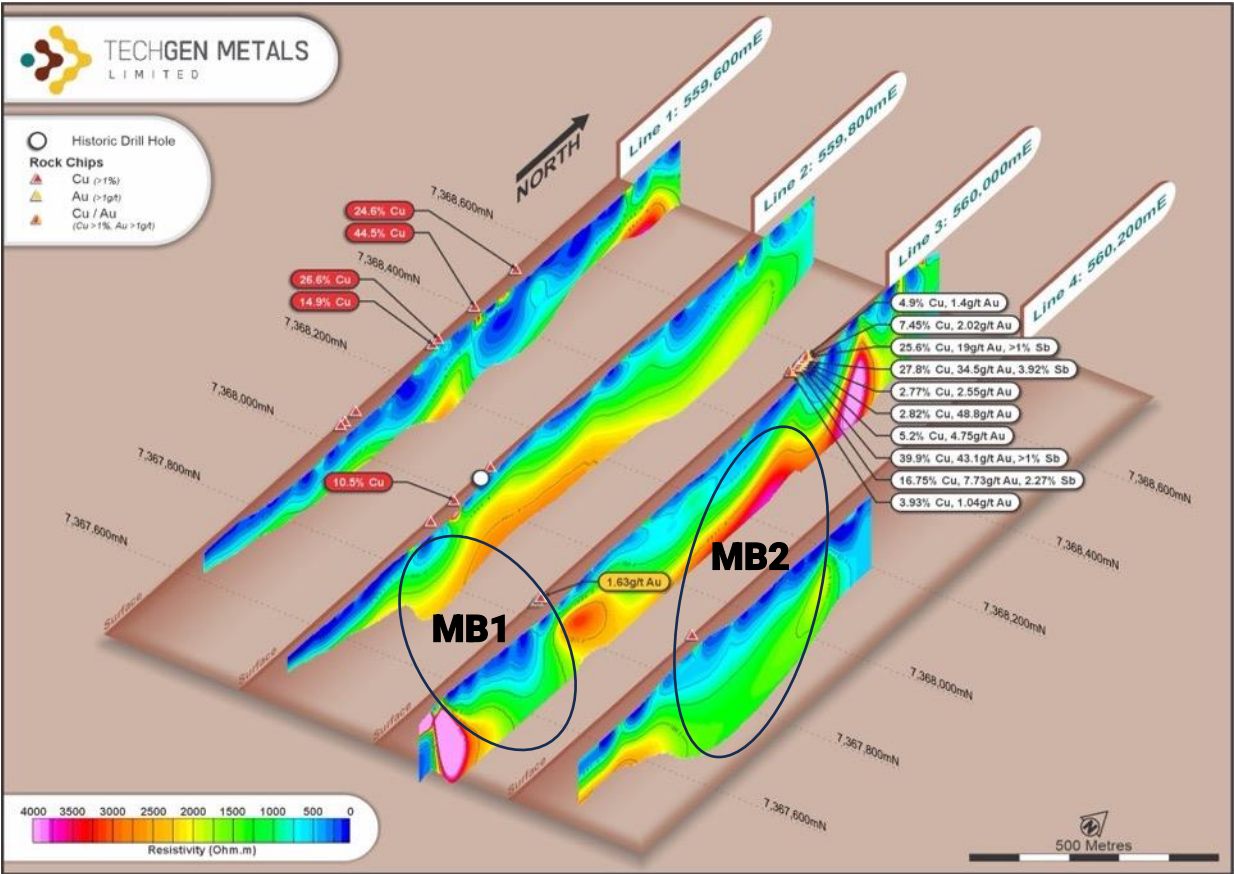


Figure 7: Resistivity IP lines with surface rock chip assays, Mt Boggola Project.

Northern Territory - Blue Bore | Cu

Unique Copper Opportunity in an Untouched Region

Location

- The Blue Bore Project is located 300 km to the southeast of Alice Springs in the Northern Territory (Figure 1). The project consists of 6 Exploration Licences, EL33313 – EL33318, covering a combined area of 3,950 km².

Mineralisation

- Prospective for Sediment-Hosted Copper: Geoscience Australia has identified the Amadeus and Warburton basins as prospective for sediment-hosted copper mineralization.
- a government water bore drilled within the southern project area in January 1900. A 315m thick interval of blue rocks (blue shale & blue limestone) was logged in the hole from 27 metres downhole through to 342 metres downhole with the hole ending at a 381 metre depth. The source of the blue colour referred to in the water bore logs is currently unknown.
- A single water sample taken at the water bore in August 2000 returned a copper analysis of 653 µg/l (equivalent to 653 ppm Cu) which is considered highly anomalous for a water sample.

Next Steps

- Heritage Protection Approval – Granting of licence – Drilling.

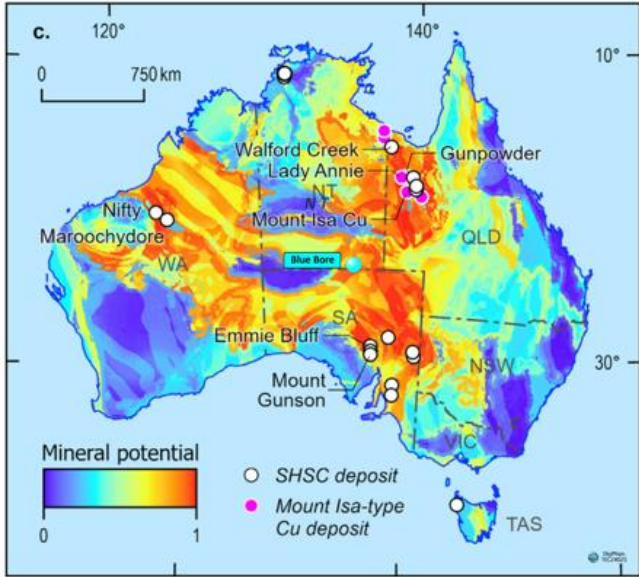
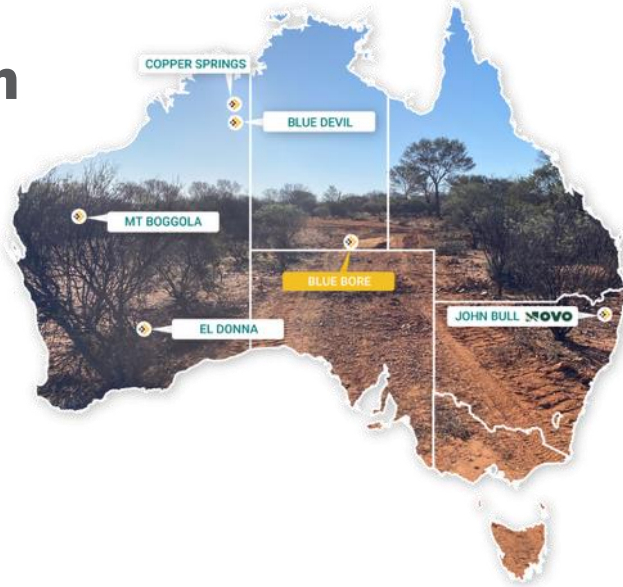


Figure 8: Location of the Blue Bore Project shown on sediment-hosted Cu mineral potential model of Australia (Model 2). From Cloutier et al., 2020.

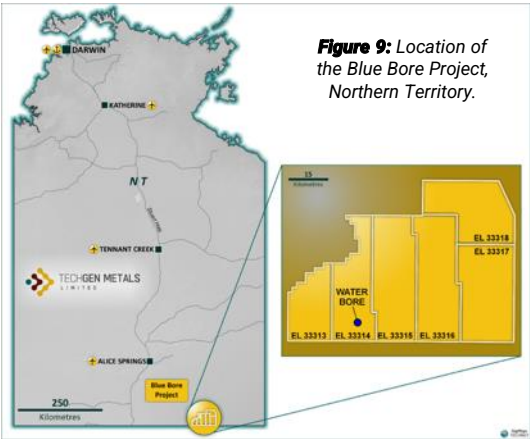


Figure 9: Location of the Blue Bore Project, Northern Territory.

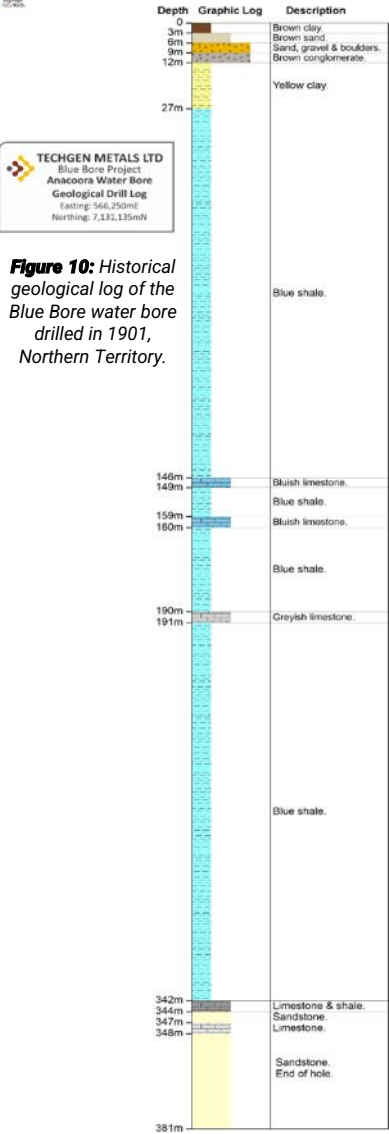


Figure 10: Historical geological log of the Blue Bore water bore drilled in 1901, Northern Territory.



New England Orogen – John Bull | Au – Novo (earn-in / JV)

Gold Discovery – September 2022

Location

- The John Bull Gold Project is located east of Glen Innes in northern New South Wales within the New England Orogen. The project covers 32km².

Maiden Drill Hole JBRC001

- First hole, JBRC001, intersected 68m @ 1.0g/t Au including 23m @ 2.02g/t Au with a peak grade of 13.8g/t Au (from surface).
- JBRC007, 94m @ 0.95 g/t Au from 4m and included 66m @ 1.14 g/t Au from 32m.
- All 7 drill holes returned assays of > 1 g/t Au.

Geochemistry

- Peak soil sample results of 10 g/t gold and 8.56 g/t gold.
- Forty-two soil samples to date have returned values + 1 g/t gold.
- Two broad zones of + 0.1 g/t (100 ppb) soil gold anomalism have been identified. Zone 1 is 950m x 275m & Zone 2 is 250m x 150m and both open.

Historic

- The John Bull Gold Shafts were mined in the mid 1880's (approximately 14 shafts have been located to date).
- Two main areas of surface gold sluicing worked in the 1940's (free gold within weather clays).
- Kennecott & Southern Goldfields completed a trench in the 1980's that returned: 160m @ 1.2g/t gold, with impressive higher-grade intervals including 5m @ 18.0g/t gold and 5m @ 7.1g/t gold.
- Since gold was first discovered 137 years ago, no drilling had occurred until TechGen Metals (August 2022).

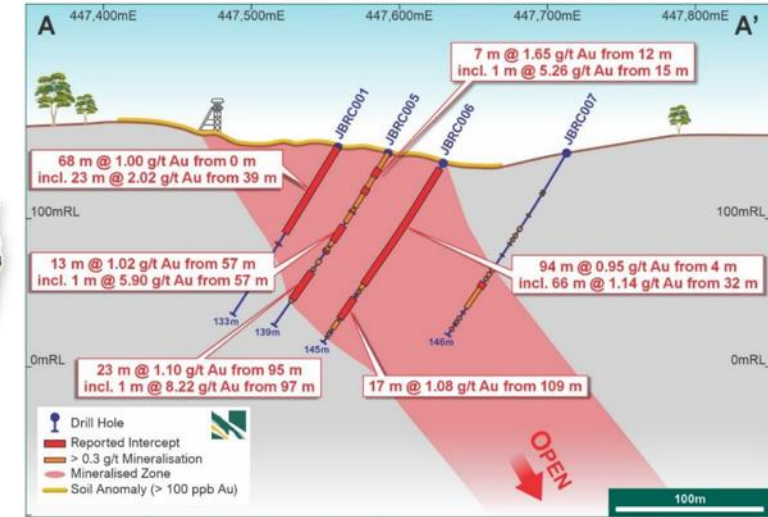
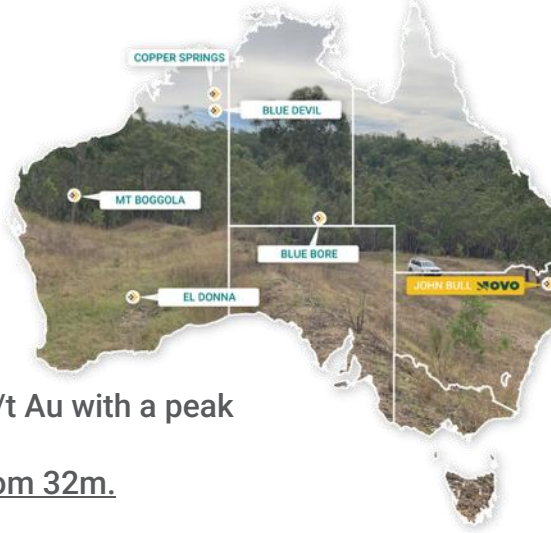


Figure 11: Cross section of gold mineralisation envelope, John Bull Project.

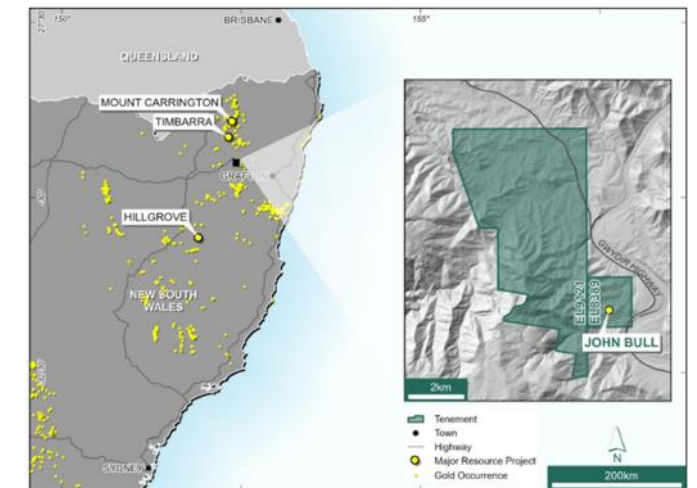


Figure 12: John Bull Project location - NSW.



Goldfields– El Donna | Au

Aircore drilling program completed

Location

- El Donna Gold Project, approximately 50km northeast of Kalgoorlie in Western Australia. The El Donna project is ideally located between the Penny's Find and Mayday North Gold mines within the Gindalbie domain, a fault bounded subdivision of the north-northwest trending Gindalbie greenstone belt of the Archean Yilgarn Craton.

Mineralisation

- El Donna lies between two high-grade open pit gold mines that both have remaining gold resources - the Mayday North Gold Mine (84,000 oz @ 1.5g/t Au - Indicated & Inferred Resource) owned by Genesis Minerals Limited (ASX: GMD) and the Penny's Find Gold Mine (63,000 oz @ 4.54 g/t Au - Indicated & Inferred Resource) owned by Horizon Minerals Limited (ASX: HRZ).
- Historic drill intersections that have not been followed up include:
 - 2m @ 17 g/t Au from 36m (RAB hole ES100; Geopeko),
 - 2m @ 8.23 g/t Au from 50m (RC hole GRC7; Wiluna Mines),
 - 5m @ 3.34 g/t Au from 66m (RC hole EDR3; Sovereign Resources),
 - 4m @ 2.84 g/t Au from 60m (RAB hole ED207; Sovereign Resources) and
 - 4m @ 2.75 g/t Au from 68m (RAB hole ED248; Sovereign Resources;
- New Aircore Supergene intercepts to be followed up include:
 - 6m @ 1.45 g/t Au from 24m (AC hole EDAC052; TechGen Metals July 2025 – Star West Target),
 - 6m @ 1.21 g/t Au from 51m (AC hole EDAC62; TechGen Metals July 2025 – Emu Fault Target).

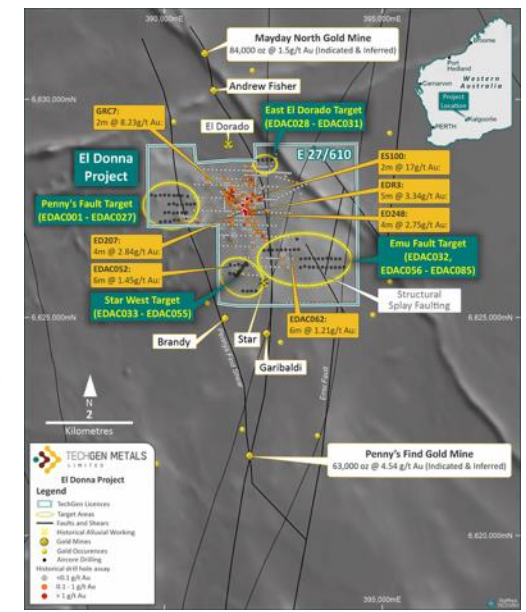
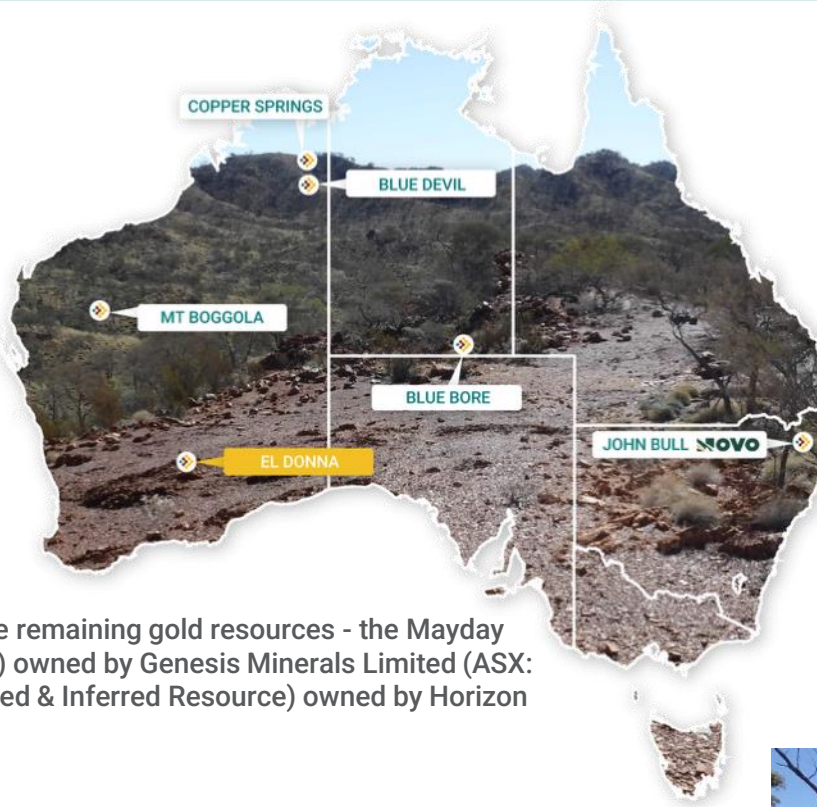


Figure 13: Location of the El Donna Project in between the Mayday North and Penny's Find open pit mines.



Photo : Executive director, Andrew Jones - Geological logging - AC drilling, El Donna Gold Project, WA.



Exploration Investment Highlights



MT BOGGOLA

- Two high chargeability IP anomalies **MB1 & MB2** located at the large Northern Star Cu/Au/Sb +/- Fe/Pb/As soil anomaly 1km x 1km.
- Peak rock chip samples;
48.8g/t Au, 27.8% Cu, 3.92% Sb, 3.72 Pb & 49.3% Fe.
- MB1 & MB2 have high chargeability and coincident resistivity anomalies and have copper gossans above IP targets.
- Newcrest drilled close by in 1995, however their RC drilling missed the MB1 & MB2 targets.
- Heritage and RC drilling Q3 and Q4 2025.



BLUE DEVIL

- Heritage Protection Agreement in place and survey booked end of July 2025.
- Three large EM conductors identified with an associated magnetic intrusion with major control faults.
- Massive boxwork copper gossans along strike.
- High grade mineralisation occurrences = **50.5% Cu, 18.5g/t Au & 53g/t Ag**
- Previous exploration largely for lead/zinc (MVT type targets)
- Large landholding favourable geology targeting VMS and Intrusive type systems
- Close to highway and port infrastructure.



JOHN BULL – NOVO JV

- Scale opportunity.
- Orogenic & Intrusive Related Gold Systems
- JBRC001 68m @1.01 g/t Au, including 23m @ 2.02 g/t from surface.
- 66m @ 1.14 g/t Au from 32m (hole JBRC006).
- Surface geochemical anomaly of +1.2km above 100ppb Au with a project peak soil value of 10g/t Au (10,000 ppb).
- Stage 3 RC, targeting possible Monzonite intrusive, peak soils of 10g/t Au and infill at John Bull shafts.
- Free hold land – no native title.

Indicative Activity Timeline

	Q3 2025			Q4 2025			Q1 2026		
Project	Jul	Aug	Sep	Oct	Nov	Dec	Jan	Feb	Mar
Blue Devil Cu/Au/Ag (Kimberley WA)	On Country Heritage Survey	Heritage Report	Drill access planning	Maiden Diamond Drill/ RC program at Blue Devil EM target		Assays			(Results based) Heritage Drilling Assays
Mt Boggola Cu/Au/Sb/Fe (Ashburton WA)		On Country Heritage Survey		Heritage Report	Drill testing		Assays & modelling	(Results based) Testing	
El Donna Au – WA (Goldfields)			RC Drilling 3,000m		Assays	(results based) RC Drilling			Assays



Disclaimer

The information contained in this presentation has been prepared by TechGen Metals Ltd (ACN 624 721 035) (Company).

This presentation is not an offer, invitation, solicitation or other recommendation with respect to the subscription for, purchase or sale of any securities in the Company. This presentation has been made available for information purposes only and does not constitute a prospectus, short form prospectus, profile statement or offer information statement nor does it constitute investment or financial product advice (nor taxation, accounting or legal advice) and it is not intended to be used as the basis for making an investment decision.

This presentation does not include all available information and should not be used in isolation as a basis to invest in the Company. This presentation is not subject to the disclosure requirements affecting disclosure documents under Chapter 6D of the Corporations Act 2001 (Cth). The information in this presentation may not be complete and may be changed, modified or amended at any time by the Company, and is not intended to, and does not, constitute representations and warranties of the Company.

The Company does not have a significant operating history on which to base an evaluation of its business and prospects. Therefore, the information contained in this presentation is inherently speculative. Certain information in this presentation may contain references to visual results. The Company draws attention to the inherent uncertainty in reporting visual results. Visual estimates of mineral abundance should never be considered a proxy or substitute for laboratory analyses where concentrations or grades are the factor of principal economic interest. Visual estimates also potentially provide no information regarding impurities or deleterious physical properties relevant to valuations.

The information contained in this presentation is strictly confidential and you must not disclose it to any other person. While the information contained in this presentation has been prepared in good faith, neither the Company or any of its directors, officers, agents, employees or advisors give any representation or warranty, express or implied, as to the fairness, accuracy, completeness or correctness of the information, opinions and conclusions contained in this presentation. Accordingly, to the maximum extent permitted by law, none of the Company, its directors, employees or agents, advisers, nor any other person accepts any liability whether direct or indirect, express or limited, contractual, tortious, statutory or otherwise, in respect of, the accuracy or completeness of the information or for any of the opinions contained in this presentation or for any errors, omissions or misstatements or for any loss, howsoever arising, from the use of this presentation.

This presentation may contain statements that may be deemed “forward looking statements”. Risks, uncertainties and other factors, many of which are outside the control of the Company can cause actual results to differ materially from such statements. Such risks and uncertainties include, but are not limited to, exploration risks, tenure and access risks and commodity price volatility and exchange rate risks, as well as political and operational risks, and governmental regulation and judicial outcomes.

The Company makes no undertaking to update or revise such statements, but has made every endeavour to ensure that they are fair and reasonable at the time of making the presentation.

Investors are cautioned that any forward-looking statements are not guarantees of future performance and that actual results or developments may differ materially from those projected in any forward-looking statements made.

Authorisation - For the purpose of Listing Rule 15.5, this announcement has been authorised for release by the Board of Directors of TechGen Metals Limited.

Competent Person Statement - The information in this announcement that relates to Exploration Results is based on and fairly represents information compiled and reviewed by Andrew Jones, a Competent Person who is a member of the Australasian Institute of Mining and Metallurgy (AusIMM). Andrew Jones is employed as a Director of TechGen Metals Limited. Andrew Jones has sufficient experience that is relevant to the style of mineralisation and type of deposits under consideration and to the activity being undertaken to qualify as a Competent Person as defined in the 2012 edition of the Australasian Code of Reporting of Exploration Results, Mineral Resources and Ore Reserves. Andrew Jones consents to the inclusion in this announcement of the matters based on his work in the form and context in which it appears.



TECHGEN METALS
LIMITED

Contact Details

ASHLEY HOOD

MANAGING DIRECTOR

E: ashley.hood@techgenmetals.com.au

P: 0427 268 999

ANDREW JONES

TECHNICAL DIRECTOR

E: andrew.jones@techgenmetals.com.au

P: 0439 994 004

Address:

Level 1, 19 Ord Street, West Perth WA 6005

PO Box 901, West Perth WA 6872

Email: admin@techgenmetals.com.au

Website: www.techgenmetals.com.au

