

**Gold Mountain Limited**  
(ASX: GMN)

24/589 Stirling Highway  
Cottesloe WA 6011  
Australia

## Directors and Management

**David Evans**  
Executive Director

**Syed Hizam Alsagoff**  
Non-Executive Director

**Aharon Zaetz**  
Non-Executive Director

**Maria Lucila Seco**  
Non-Executive Director

**Marcelo Idoyaga**  
Non-Executive Director

**Pablo Tarantini**  
Non-Executive Director

**Rhys Davies**  
CFO & Company Secretary

## Projects

### Lithium Projects (Brazil)

Cococi region  
Custodia  
Iguatu region  
Jacurici  
Juremal region  
Salinas region  
Salitre  
Serido Belt

### Copper Projects (Brazil)

Ararenda region  
Sao Juliao region  
Iguatu region

### REE Projects (Brazil)

Jequeie

### Copper Projects (PNG)

Wabag region  
Green River region

ASX:GMN

info@goldmountainltd.com.au

+61 421 903 222

# Quarterly Activities Report

## For the Quarter Ended 30 June 2025

Gold Mountain's (ASX:GMN) ("The Company" or "GMN") activities maintained momentum in the 4th quarter of the financial year ending 30 June 2025 with increasing activity and results flow from Brazil.

## Headlines

- Diamond Drilling Commenced at Irajuba
- Exploration Target of 30-50 million tonnes grading at 1,100 – 1,600 ppm TREO defined at Irajuba
- Major Copper-Gold Anomalies at Ararendá

## Down Under Rare Earths Project - Irajuba Prospect – Initial Rare Earth Exploration Target Defined (Bahia, Brazil)

## Highlights


- High-grade TREO and Magnet Rare Earths (MREO) intercepted in multiple drill holes, including:
- IR-AD240070 with **20 metres @ 1,282 ppm TREO** from 5 metres depth
- IR-AD250065 with **7 metres @ 1,863 ppm TREO** from 4 metres depth
- IR-AD240013 with **10 metres @ 1,929 ppm TREO** from 6 metres depth including **2 metres @ 4,960 ppm TREO**
- DU-IR-24\_AD0129 with **8 metres @ 2,006 ppm TREO** from 7 metres depth

## Geological setting:

An Exploration Target of 30-50 million tonnes grading 1,100-1,600 ppm TREO has been defined in the area scheduled for diamond drilling. This is surrounded by a contiguous zone with an additional Exploration Target of 100-140 million tonnes, highlighting the significant scale and potential of the mineralised system.



Figure 1. Drill hole section over **3 kilometres extent** showing the intensity of weathering indicated by the Chemical index of Alteration in green (CIA, target zone is between 65% and 95%) together with zones of mineralisation in red above the cut off of 400 ppm TREO. **Maximum values were up to 3362 ppm TREO with 69% Magnet REO/Total REO -CeO2.**



I am pleased with the progress of the Company over the Quarter, particularly the commencement of our diamond drilling program at Irajuba.

The continuing flow of positive assay results over the past quarter is a testament to our team's efforts in the extensive sampling programs conducted on our Rare Earth Element, Lithium, Copper, Niobium and Tungsten projects.

We are developing high-quality prospects including multiple drill targets in some of Brazil's most promising regions for critical mineral exploration.

Data from our programs to date are continuing to be processed and interpreted with the exploration teams preparing further drill targets to test for the remainder of 2025.

- *David Evans,*  
*Managing Director*

### **Future Program**

- Diamond Drilling commenced in July at Irajuba Prospect, focussing on an initial Exploration Target area with potential of 30-50 million tonnes.
- Auger drilling will continue to identify new areas for future Exploration Targets alongside additional stream sediment sampling to complete coverage of the northern parts of the Down Under Project area.
- In areas where high-grade intersections have been identified, auger drilling will be extended to support the estimation of Exploration Targets ahead of planned diamond drilling.
- Metallurgical samples will be compiled from the diamond drilling program to assess the desorbable REE content.

### **Down Under Rare Earths Project - Varzedo Prospect – Expanded REE Anomalies (Bahia, Brazil)**

#### **Highlights**

- Sediment sampling assays from Varzedo Prospect show strongly clustered high-grade TREO and also indicates potential for ultra-high-grade hard rock monazite-rich REE-Nb-U-Sc mineralization.
- A series of gold targets warranting further testing were identified in a major structural zone which has characteristics similar to the world class IRGS deposits in Alaska and Canada

#### **Geological context:**

The area was selected for its very strong thorium radiometric signature, indicating potential for REE mineralisation, supported by the stream sediment sampling which has shown strong TREO anomalies. In addition, the geological setting and gold anomalies and mineral association found is indicative of Intrusion Related Gold Systems (IRGS or IRGD). The Varzedo tenements lie over a major crustal block suture zone with extensive associated retrograde metamorphism. Regionally, the suture zone and associated shears are known to have syenitic intrusives emplaced into the retrograde shear zones. IRGS gold deposits contain a metal suite that includes some combination of bismuth, tungsten, arsenic, tin, molybdenum, tellurium and antimony, the association seen with the gold anomalies at Varzedo.



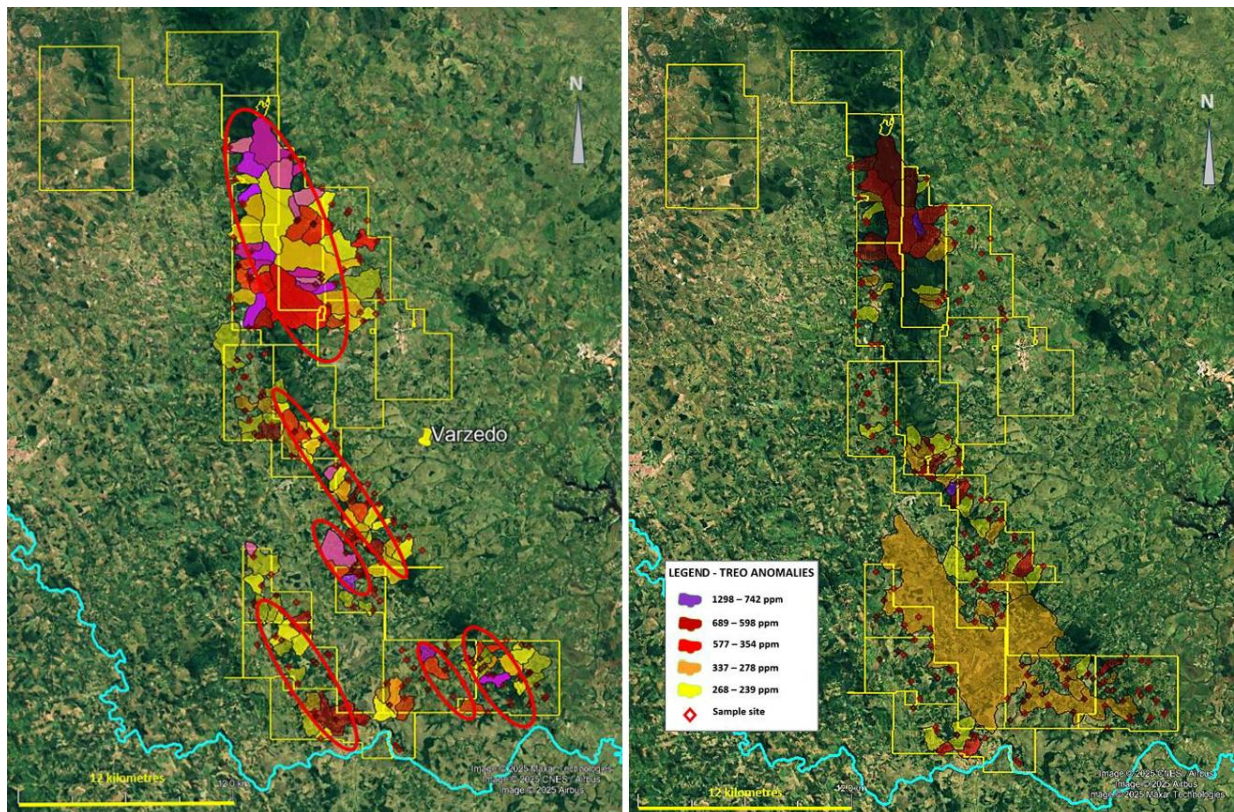


Figure 2. Left map represents Combined anomalies for Au-As-Bi-Mo-S-Sb-Sn-Te-W on the Varzedo tenements. Right map showing TREO anomalies plotted as catchment areas for anomalous TREO values.

#### Future Workplan

- Auger drilling over the two groups of catchment areas with significantly anomalous TREO and on anomalies indicative of possible ultra-high-grade hard rock REE mineralisation to define areas for diamond drilling for future resource definition.
- Radiometric traversing will be conducted in the most highly anomalous catchments and along all drill traverse lines to identify potential ultra-high-grade hard rock deposits.

#### Água Boa Prospect – Lithium Valley, Minas Gerais (Brazil)

##### Highlights:

- Received 146 soil samples from the Agua Boa tenement (831.703/2022).
- Strong lithium and Li pathfinder anomalies identified over 1.2 km strike in the northern part of the soil grid with coincident Rb, Sn, Tl, Cs and Be anomalies.
- Anomalies are spatially associated with granitic pegmatite bodies and biotite granite host rocks, and remain open to the north and south.
- Multiple mapped pegmatites and areas of aplite dykes coincide with highly anomalous lithium values.
- Presence of tin anomalies suggests potential pegmatite extensions beneath laterite.
- Mapping revealed pegmatites up to 10 meters wide and quartz boulders indicative of pegmatite cores.



## Geological Setting:

The target area comprises fine- to medium-grained biotite granite intruding metasediments of the Salinas Formation. Pegmatitic dykes are commonly observed, some exceeding from 5 to 30 metres in thickness, and are generally concordant with local foliation. Muscovite rich zones and tourmaline mineralisation are also noted within and around pegmatitic bodies.

The results strongly support the lithium prospectivity of the Água Boa Prospect and confirm the project's location within an active and highly fertile lithium belt.

## Future Workplan

- Complete soil sample coverage of the remaining 66% of the tenement plus extra soil lines to follow up anomalies defined by the current results and additional results not yet received
- Continue detailed mapping to refine currently identified LCT pegmatite anomalies
- Define lithium drilling targets and obtain environmental permits for drilling

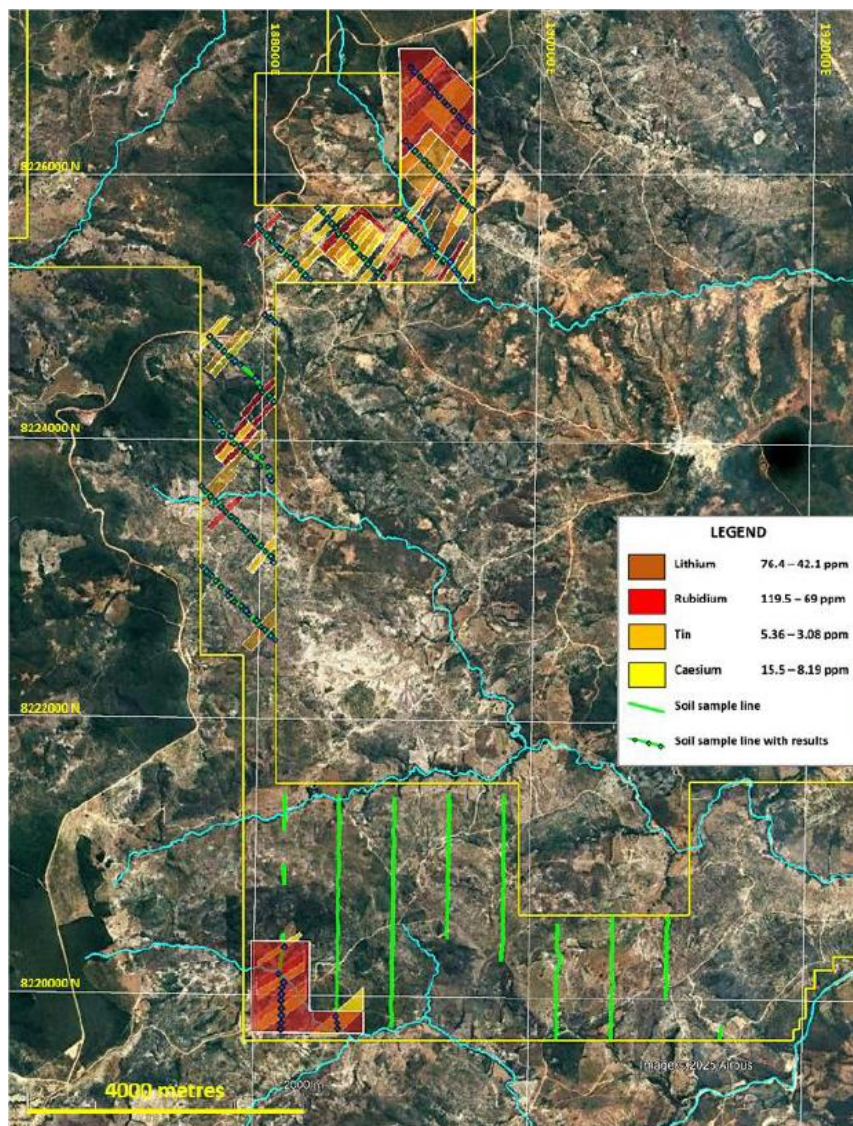


Figure 3. Lithium, rubidium, tin and caesium in soil anomalies on 831.703/2022 over a satellite imagery base.

## Seridó Belt Project – Tungsten Exploration (Rio Grande do Norte, Brazil)

### Highlights:

- A **15 km long corridor** of highly anomalous tungsten values was delineated, with stream sediment samples returning up to **56.3 ppm W**.
- The anomalies are also **structurally controlled**, often aligned with regional-scale faults and aligned along strike to the north with one of the most prominent W deposits in Brazil, Brejuí mine, and known underground tungsten workings to the south.

### Geological Context:

The Seridó region is historically known for tungsten production, with known occurrences and major mines located near or within GMN's tenements. The region hosts numerous **granite intrusions**, which are interpreted as drivers of skarn-type mineralisation. Field observations have confirmed the presence of carbonate-bearing metasedimentary units that may serve as favourable reactive host rocks for tungsten skarns. The geochemical correlations, particularly with bismuth, yttrium, and molybdenum, reinforce the interpretation of a significantly mineralised system.

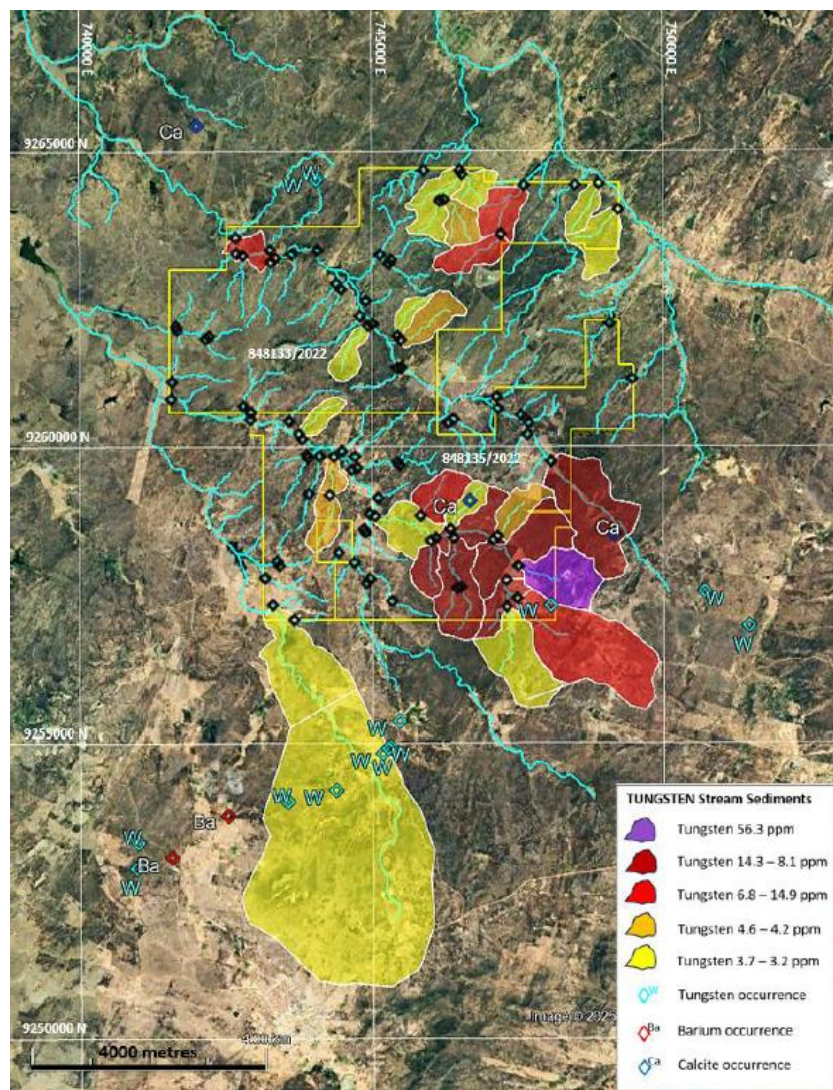


Figure 4. Logradouro Prospect showing complied tungsten results with sample locations in black and drainage network. A moderate order yellow anomaly extends south into the area of known



*underground tungsten mines previously inspected by GMN. Note that stronger tungsten anomalies are present within GMN tenements.*

#### **Future Workplan:**

- Follow-up mapping and sampling to refine the highest priority targets.
- Planning for geophysical survey to aid in the delineation of skarn zones.
- Definition of potential drill targets.

These results strongly support the potential for **new skarn-hosted tungsten discoveries** in the Seridó Belt, reinforcing GMN's strategic focus on critical minerals exploration in Brazil.

#### **Ararendá Project – Copper-Gold Exploration (Ceará, Brazil)**

##### **Highlights:**

- A major copper-gold anomaly has been identified, extending over 11 km in a N-S direction
- The major anomaly lies to the north of the known iron and copper mineralised zone underlain by a major IP anomaly that extends into GMN tenements.

##### **Geological context:**

Ararenda is located at the Borborema Province where major shear zones has allowed magma intrusion and hydrothermal activity. IOCG type copper-gold mineralisation was previously identified on a competitor's tenement which is now surrounded by GMN tenements. A single rock sample from that area returned copper grades exceeding 1% Cu with 0.16 g/t Au was from a rock mass containing approximately 3% chalcopyrite crystals, surrounded by a distinct oxidised halo, indicating a higher concentration of chalcopyrite prior to weathering.

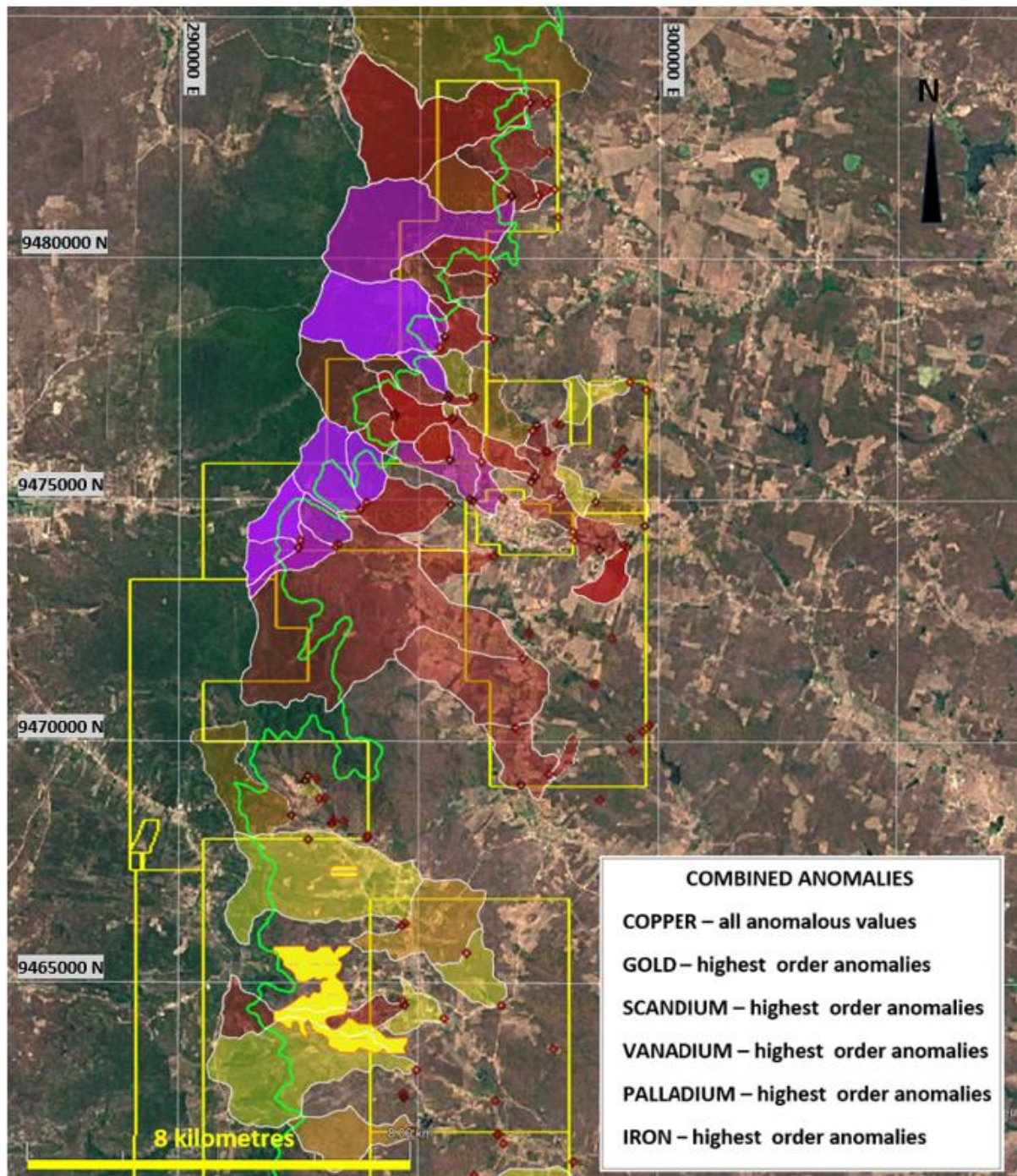


Figure 5. Combined strongly correlated anomalies in the northern Ararenda Project area.

#### Future Workplan

- Soil Sampling at the Ararenda Copper - Gold anomalous areas.
- Follow-up Induced Polarisation (IP) and magnetic surveys to better define the geometry and extent of potential mineralised systems to prioritise specific RC and diamond drill targets.
- Stream sediment sampling will be carried out over the new tenement applications once they have been granted.



## Iguatu Project – Tungsten, Molybdenum & Copper (Ceará, Brazil)

### Highlights:

- Multiple high-order tungsten (W) and molybdenum (Mo) anomalies were defined in the eastern part of the Iguatu Project.
- Anomalies are associated with carbonate-bearing rock types and interpreted intrusive bodies, a typical setting for skarn systems.
- A zonal pattern was identified at the Quincuncá prospect, with a copper-gold centre surrounded by molybdenum and peripheral tungsten enrichment.
- Principal target areas include Saboeira, Jucás, and Quincuncá, with the strongest W and Mo results overlapping regional structural features.

### Geological Context:

The anomalies follow interpreted shearing fault zones and rheological contacts, which has allowed magma intrusion. Mapping has confirmed the presence of granitic intrusions and carbonate-rich host rocks, with skarn-type alteration observed.

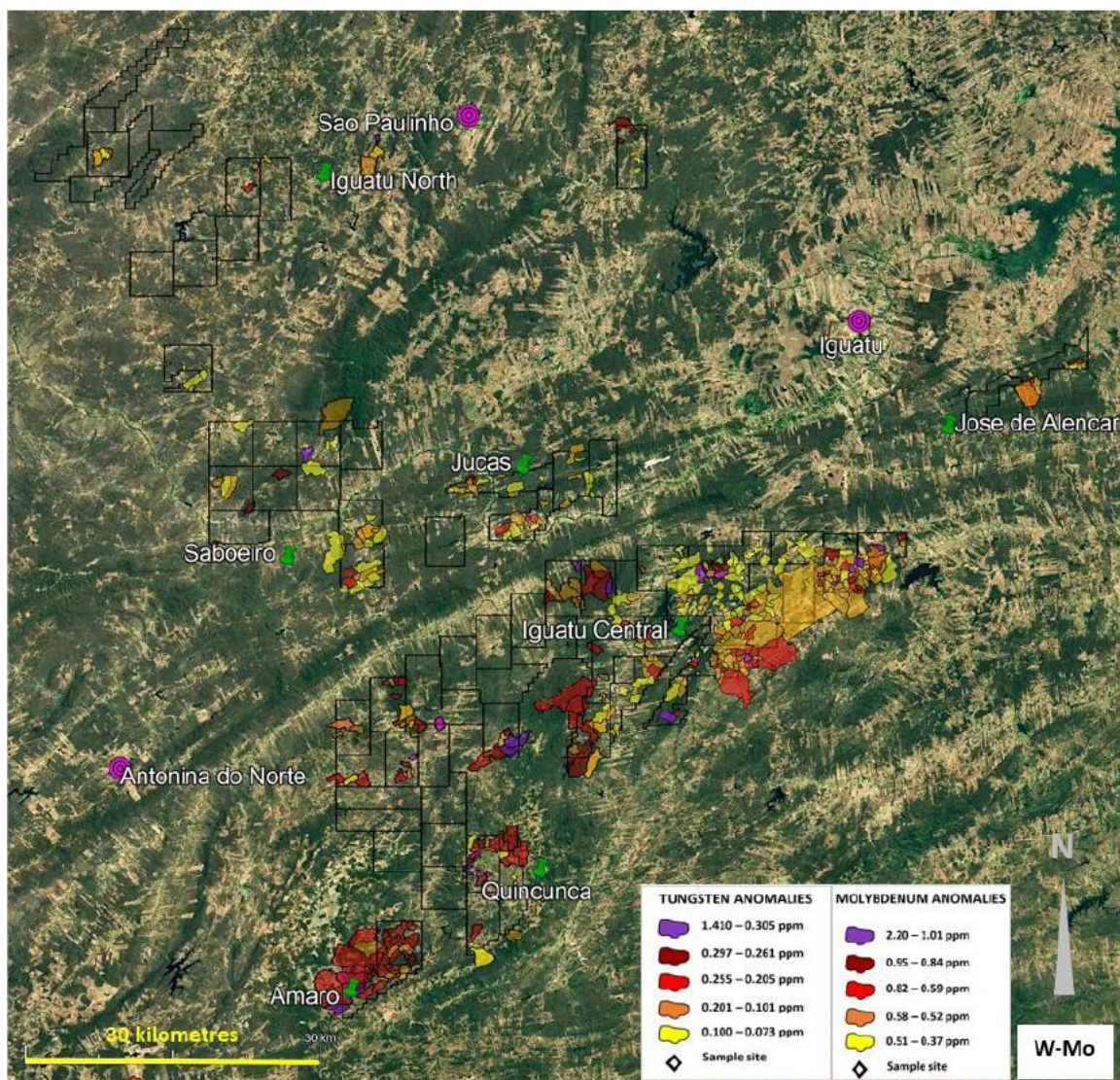


Figure 6. Compiled tungsten and molybdenum anomalies at Iguatu. Purple catchments are highest order anomalies and yellow catchments are lowest order anomalies.

## Future Workplan

- Conduct infill stream sediment and soil sampling in anomalous areas.
- Undertake detailed geological mapping of dioritic intrusive margins.
- Implement ground or airborne geophysical surveys (e.g., IP) to refine drill targets.
- Advance to drill testing of prioritised zones.

## Corporate Update

During the quarter the Company conducted an Underwritten Pro Rata Accelerated Renounceable Entitlement Offer to raise \$3.05m at \$0.02 per share which will enable the Company to commence the next stages of its drilling program in Brazil.

The Company also completed a consolidation of its share capital on a 50:1 basis.

- END -

**This ASX announcement has been authorised by the Board of Gold Mountain Limited**

**For further information, please contact:**

**Gold Mountain Limited**

**David Evans**

Executive Director

M: +61 421 903 222

E: [info@goldmountainltd.com.au](mailto:info@goldmountainltd.com.au)

## About Us

Gold Mountain (ASX:GMN) is a mineral explorer with projects based in Brazil and Papua New Guinea (PNG). These assets, which are highly prospective for a range of metals including rare earth elements, niobium, lithium, nickel, copper and gold, are now actively being explored.

Gold Mountain has gradually diversified its project portfolio. The Company has highly prospective rare earth elements (REE), niobium, copper and lithium licenses located within the eastern Brazilian lithium belt, spread over parts of the Borborema Province and São Francisco craton in north-eastern Brazil including in Salinas, Minas Gerais.

In PNG, Gold Mountain is exploring the Wabag Project, which covers approximately 950km<sup>2</sup> of highly prospective exploration ground in the Papuan Mobile belt. This project contains three targets, Mt Wipi, Monoyal and Sak Creek, all lying within a northwest-southeast striking structural corridor. The three prospects have significant potential to host a porphyry copper-gold-molybdenum system and, or a copper-gold skarn system. Gold Mountain's current focus is Mongae Creek, which has been subjected to several phases of exploration, and the potential to host a significant copper-gold deposit is high. The current secondary targets are, in order of priority, Mt Wipi, Lombokai and Sak Creek. A new target, potentially another epithermal/porphyry system, has been identified at Mamba Creek.

Gold Mountain has also applied for a total of 1,048 km<sup>2</sup> in two exploration licences at Green River where high-grade Cu-Au and Pb-Zn float has been found and porphyry style mineralisation was identified by previous explorers. Intrusive float, considered to be equivalent to the hosts of the majority of Cu and Au deposits in mainland PNG, was also previously identified in one of the tenements which has now been granted.



## References

GMN ASX Release 2 April 2025 Excellent Soil Sample Results from Agua Boa, Lithium Valley

GMN ASX Release 14 April 2025 Tungsten Anomalies at Serido Belt Project

GMN ASX Release 24 April 2025 Encouraging Copper-Gold Anomalies Identified at Ararenda

GMN ASX Release 11 June 2025 Tungsten-Molybdenum Anomalies at Iguatu Project

GMN ASX Release 07 July 2025 Down Under Expands Anomalous Rare Earths Areas

GMN ASX Release 15 July 2025 Well Defined strong Copper-Gold Anomalies at Ararenda Project

GMN ASX Release 21 July 2025 Exploration Target Defined at Irajuba

GMN ASX Release 25 July 2025 Diamond Drilling Commenced on Irajuba Exploration Target

## Appendix A

### ASX Additional Information

#### ASX LR 5.3.1:

Exploration and Evaluation Expenditure during the quarter was \$1,207k. Details of the exploration activities are set out in this report.

Expenditure	\$'000
Consultancy and Wages	259
Tenement Management, Site Services and Other including taxes	864
Geophysics and laboratory	84
Total	1,207

#### ASX LR 5.3.2:

The Company confirms there were no production or development activities during the quarter.

## ASX LR 5.3.3: Mining Tenements held/applied for at the end of the quarter and their location

### Wabag Project and Green River-Amanab Project Tenements - PNG

License	License Name	License Holder	GMN Interest	Status	Area	Area km2	Granted	Expiry
EL1966	Sak Creek	Viva No.20 Limited	70%	Active - Renewal Pending- MAC	30 sub- blocks	102	27/06/2013	26/06/2023
EL1968	Crown Ridge	Viva No.20 Limited	70%	Active - Renewal Pending- MAC	30 sub- blocks	102	28/11/2013	27/11/2023
EL2306	Alukula / Kompam Station	Khor ENG Hock & Sons (PNG) Limited / Abundance Valley (PNG) Limited	70%	Active - Renewal Pending- MAC	48 sub- blocks	164	14/02/2015	13/12/2023
EL2563	Kompam	Abundance Valley (PNG) Limited	100%	Active - Renewal Pending	48 sub- blocks	164	23/01/2020	22/01/2022
EL2565	Londol	Viva Gold (PNG) Limited	100%	Active - Renewal Pending	74 sub- blocks	252	27/05/2019	26/05/2023
EL2632	Mt. Wipi	GMN 6768 (PNG) Limited	100%	Active- Renewal submitted	74 sub- blocks	252	14/08/2020	13/08/2024
EL2705	Yengit	Abundance Valley (PNG) Limited	100%	Active	5 sub- blocks	17	31/10/2023	30/10/2025
ELA2779	Nelemanda	Abundance Valley (PNG) Limited	100%	Application in time	30 sub- blocks	102		
ELA2786	Green River	Viva Gold (PNG) Limited	100%	Active – recalled, objection lodged	146 sub- blocks	498	22/4/2024	21/4/2026
ELA2808	Amanab	Viva Gold (PNG) Limited	100%	Application - Wardens Hearing to be scheduled	161 sub- blocks	549		



## REE, Lithium, Copper, Copper-Nickel, and Niobium Projects Tenement Status Brazil

Project Name	Tenement ID	Area (ha)	GMN % Ownership	Status	Holding Company or Representative	Commodity	State
Ararenda	800370/2022	1980.30	75%	Granted	Mars GMN Brazil Ltda	Copper	Ceara
Ararenda	800371/2022	1982.69	75%	Granted	Mars GMN Brazil Ltda	Copper	Ceara
Ararenda	800372/2022	1971.46	75%	Granted	Mars GMN Brazil Ltda	Copper	Ceara
Ararenda	800373/2022	1989.46	75%	Granted	Mars GMN Brazil Ltda	Copper	Ceara
Ararenda	800520/2022	1981.05	75%	Granted	Mars GMN Brazil Ltda	Copper	Ceara
Ararenda	800522/2022	1990.80	75%	Granted	Mars GMN Brazil Ltda	Copper	Ceara
Ararenda	800524/2022	1920.38	75%	Granted	Mars GMN Brazil Ltda	Copper	Ceara
Ararenda	800602/2022	1983.65	75%	Granted	Mars Mines Brasil LTDA	Lithium	Ceara
Ararenda	800525/2022	1839.07	75%	Granted	Mars GMN Brazil Ltda	Copper	Ceara
Ararenda	800521/2022	1344.04	75%	Granted	Mars GMN Brazil Ltda	Copper	Ceara
Araxa	830331/2024	1985.47	100%	Granted	Mars GMN Brazil Ltda	Niobium	Minas Gerais
Araxa	830336/2024	1989.17	100%	Granted	Mars GMN Brazil Ltda	Niobium	Minas Gerais
Araxa	830338/2024	1987.46	100%	Granted	Mars GMN Brazil Ltda	Niobium	Minas Gerais
Araxa	830339/2024	1987.58	100%	Granted	Mars GMN Brazil Ltda	Niobium	Minas Gerais
Araxa	830343/2024	1988.24	100%	Granted	Mars GMN Brazil Ltda	Niobium	Minas Gerais
Araxa	830332/2024	1985.45	100%	Granted	Mars GMN Brazil Ltda	Niobium	Minas Gerais
Araxa	830333/2024	1988.98	100%	Granted	Mars GMN Brazil Ltda	Niobium	Minas Gerais
Araxa	830341/2024	1988.91	100%	Granted	Mars GMN Brazil Ltda	Niobium	Minas Gerais
Araxa	830384/2024	1988.29	100%	Granted	Quantum Litio Brasil LTDA	Niobium	Minas Gerais
Araxa	830402/2024	1110.54	100%	Granted	Quantum Litio Brasil LTDA	Niobium	Minas Gerais
Araxa	830330/2024	1986.80	100%	Granted	Mars GMN Brazil Ltda	Nickel	Minas Gerais
Araxa	830334/2024	1983.89	100%	Granted	Mars GMN Brazil Ltda	Niobium	Minas Gerais
Araxa	830326/2024	1982.84	100%	Granted	Mars GMN Brazil Ltda	Niobium	Minas Gerais
Araxa	830327/2024	1988.03	100%	Granted	Mars GMN Brazil Ltda	Niobium	Minas Gerais
Araxa	830328/2024	1978.33	100%	Granted	Mars GMN Brazil Ltda	Niobium	Minas Gerais
Araxa	830329/2024	1922.53	100%	Granted	Mars GMN Brazil Ltda	Niobium	Minas Gerais
Araxa	830377/2024	1986.33	100%	Granted	Quantum Litio Brasil LTDA	Niobium	Minas Gerais
Araxa	830380/2024	1985.72	100%	Granted	Quantum Litio Brasil LTDA	Niobium	Minas Gerais
Araxa	830383/2024	1975.34	100%	Granted	Quantum Litio Brasil LTDA	Niobium	Minas Gerais
Araxa	830340/2024	1986.78	100%	Application	Mars GMN Brazil Ltda	Niobium	Minas Gerais
Bandarra	848087/2022	1951.39	75%	Granted	Mars GMN Brazil Ltda	Lithium	Rio Grande do Norte
Bandarra	848003/2023	1363.63	75%	Granted	Tatiana Barbosa de Souza Libardi	Copper	Rio Grande do Norte
Casa Nova	870133/2023	1239.09	75%	Granted	Mars Mines Brasil LTDA	Copper	Bahia
Casa Nova	870134/2023	1981.79	75%	Granted	Mars Mines Brasil LTDA	Copper	Bahia
Casa Nova	870135/2023	1877.38	75%	Granted	Mars Mines Brasil LTDA	Copper	Bahia
Casa Nova	870136/2023	1970.98	75%	Granted	Mars Mines Brasil LTDA	Copper	Bahia
Casa Nova	870137/2023	1975.64	75%	Granted	Mars Mines Brasil LTDA	Copper	Bahia
Casa Nova	870138/2023	1966.82	75%	Granted	Mars Mines Brasil LTDA	Copper	Bahia
Casa Nova	870139/2023	1962.82	75%	Granted	Mars Mines Brasil LTDA	Copper	Bahia
Casa Nova	870140/2023	1966.81	75%	Granted	Mars Mines Brasil LTDA	Copper	Bahia
Casa Nova	870141/2023	1973.41	75%	Granted	Mars Mines Brasil LTDA	Copper	Bahia
Casa Nova	870142/2023	1940.46	75%	Granted	Mars Mines Brasil LTDA	Copper	Bahia
Casa Nova	870143/2023	1988.83	75%	Granted	Mars Mines Brasil LTDA	Copper	Bahia
Casa Nova	870144/2023	1940.80	75%	Granted	Mars Mines Brasil LTDA	Copper	Bahia
Casa Nova	870145/2023	1870.02	75%	Granted	Mars Mines Brasil LTDA	Copper	Bahia

Casa Nova	870163/2023	1961.13	75%	Granted	Mars Mines Brasil LTDA	Copper	Bahia
Casa Nova	870164/2023	1969.83	75%	Granted	Mars Mines Brasil LTDA	Copper	Bahia
Casa Nova	870165/2023	1979.19	75%	Granted	Mars Mines Brasil LTDA	Copper	Bahia
Casa Nova	870166/2023	1885.85	75%	Granted	Mars Mines Brasil LTDA	Copper	Bahia
Casa Nova	870167/2023	1959.48	75%	Granted	Mars Mines Brasil LTDA	Copper	Bahia
Casa Nova	870168/2023	1974.56	75%	Granted	Mars Mines Brasil LTDA	Copper	Bahia
Casa Nova	870169/2023	1978.73	75%	Granted	Mars Mines Brasil LTDA	Copper	Bahia
Casa Nova	870170/2023	1961.99	75%	Granted	Mars Mines Brasil LTDA	Copper	Bahia
Casa Nova	870171/2023	1957.13	75%	Granted	Mars Mines Brasil LTDA	Copper	Bahia
Casa Nova West	870185/2023	1962.35	75%	Granted	Mars Mines Brasil LTDA	Copper	Bahia
Casa Nova West	870186/2023	1957.60	75%	Granted	Mars Mines Brasil LTDA	Copper	Bahia
Casa Nova West	870189/2023	1980.74	75%	Granted	Mars Mines Brasil LTDA	Copper	Bahia
Casa Nova West	870190/2023	1978.26	75%	Granted	Mars Mines Brasil LTDA	Copper	Bahia
Casa Nova West	870187/2023	1978.74	75%	Granted	Mars Mines Brasil LTDA	Copper	Bahia
Casa Nova West	870188/2023	1917.92	75%	Granted	Mars Mines Brasil LTDA	Copper	Bahia
Cococi	800320/2022	1987.03	75%	Granted	Mars GMN Brazil Ltda	Copper	Ceara
Cococi	800319/2022	1977.57	75%	Granted	Mars GMN Brazil Ltda	Copper	Ceara
Cococi	800321/2022	1978.52	75%	Granted	Mars GMN Brazil Ltda	Copper	Ceara
Cococi	800322/2022	1977.44	75%	Granted	Mars GMN Brazil Ltda	Copper	Ceara
Custodia	840027/2022	1955.24	75%	Granted	Tatiana Barbosa de Souza Libardi	Lithium	Pernambuco
Custodia	840028/2022	1988.74	75%	Granted	Quantum Litio Brasil LTDA	Lithium	Pernambuco
Custodia	840195/2018	1599.49	75%	Granted	Mars Mines Brasil LTDA	Lithium	Pernambuco
Down Under	872222/2023	1974.65	100%	Granted	Mars GMN Brazil Ltda	Rare Earths	Bahia
Down Under	872223/2023	1985.85	100%	Granted	Mars GMN Brazil Ltda	Rare Earths	Bahia
Down Under	872224/2023	1985.88	100%	Granted	Mars GMN Brazil Ltda	Rare Earths	Bahia
Down Under	872225/2023	1985.10	100%	Granted	Mars GMN Brazil Ltda	Rare Earths	Bahia
Down Under	872226/2023	1985.34	100%	Granted	Mars GMN Brazil Ltda	Rare Earths	Bahia
Down Under	872228/2023	1986.26	100%	Granted	Mars GMN Brazil Ltda	Rare Earths	Bahia
Down Under	872229/2023	1985.59	100%	Granted	Mars GMN Brazil Ltda	Rare Earths	Bahia
Down Under	872231/2023	1913.79	100%	Granted	Mars GMN Brazil Ltda	Rare Earths	Bahia
Down Under	872232/2023	1982.18	100%	Granted	Mars GMN Brazil Ltda	Rare Earths	Bahia
Down Under	872234/2023	1986.17	100%	Granted	Mars GMN Brazil Ltda	Rare Earths	Bahia
Down Under	872238/2023	1987.50	100%	Granted	Mars GMN Brazil Ltda	Rare Earths	Bahia
Down Under	872334/2023	1981.95	100%	Granted	Mars GMN Brazil Ltda	Rare Earths	Bahia
Down Under	872335/2023	1979.88	100%	Granted	Mars GMN Brazil Ltda	Rare Earths	Bahia
Down Under	872341/2023	1950.80	100%	Granted	Mars GMN Brazil Ltda	Rare Earths	Bahia
Down Under	872344/2023	1978.61	100%	Granted	Mars GMN Brazil Ltda	Rare Earths	Bahia
Down Under	872373/2023	1973.78	100%	Granted	Mars GMN Brazil Ltda	Rare Earths	Bahia
Down Under	872375/2023	1987.07	100%	Granted	Mars GMN Brazil Ltda	Rare Earths	Bahia
Down Under	872377/2023	1980.76	100%	Granted	Mars GMN Brazil Ltda	Rare Earths	Bahia
Down Under	872378/2023	1984.77	100%	Granted	Mars GMN Brazil Ltda	Rare Earths	Bahia
Down Under	872379/2023	1977.25	100%	Granted	Mars GMN Brazil Ltda	Rare Earths	Bahia
Down Under	872385/2023	1981.03	100%	Granted	Mars GMN Brazil Ltda	Rare Earths	Bahia
Down Under	872233/2023	1987.20	100%	Granted	Mars GMN Brazil Ltda	Rare Earths	Bahia



Down Under	872235/2023	1984.99	100%	Granted	Mars GMN Brazil Ltda	Rare Earths	Bahia
Down Under	872237/2023	1986.46	100%	Granted	Mars GMN Brazil Ltda	Rare Earths	Bahia
Down Under	872218/2023	1980.63	100%	Granted	Mars GMN Brazil Ltda	Rare Earths	Bahia
Down Under	872219/2023	1982.27	100%	Granted	Mars GMN Brazil Ltda	Rare Earths	Bahia
Down Under	872220/2023	1984.58	100%	Granted	Mars GMN Brazil Ltda	Rare Earths	Bahia
Down Under	872221/2023	1984.14	100%	Granted	Mars GMN Brazil Ltda	Rare Earths	Bahia
Down Under	872411/2023	1943.77	100%	Granted	Mars GMN Brazil Ltda	Rare Earths	Bahia
Down Under	872413/2023	1983.21	100%	Granted	Mars GMN Brazil Ltda	Rare Earths	Bahia
Down Under	872415/2023	1958.12	100%	Granted	Mars GMN Brazil Ltda	Rare Earths	Bahia
Down Under	872416/2023	1981.93	100%	Granted	Mars GMN Brazil Ltda	Rare Earths	Bahia
Down Under	872417/2023	1982.97	100%	Granted	Mars GMN Brazil Ltda	Rare Earths	Bahia
Down Under	872420/2023	1987.24	100%	Granted	Mars GMN Brazil Ltda	Rare Earths	Bahia
Down Under	872421/2023	1983.85	100%	Granted	Mars GMN Brazil Ltda	Rare Earths	Bahia
Down Under	872422/2023	1984.17	100%	Granted	Mars GMN Brazil Ltda	Rare Earths	Bahia
Down Under	872424/2023	1979.94	100%	Granted	Mars GMN Brazil Ltda	Rare Earths	Bahia
Down Under	872425/2023	1984.09	100%	Granted	Mars GMN Brazil Ltda	Rare Earths	Bahia
Down Under	872427/2023	1962.54	100%	Granted	Mars GMN Brazil Ltda	Rare Earths	Bahia
Down Under	872428/2023	1986.54	100%	Granted	Mars GMN Brazil Ltda	Rare Earths	Bahia
Down Under	872429/2023	1985.03	100%	Granted	Mars GMN Brazil Ltda	Rare Earths	Bahia
Down Under	872430/2023	1971.82	100%	Granted	Mars GMN Brazil Ltda	Rare Earths	Bahia
Down Under	872350/2023	1982.40	100%	Granted	Mars GMN Brazil Ltda	Rare Earths	Bahia
Down Under	872418/2023	1981.59	100%	Granted	Mars GMN Brazil Ltda	Rare Earths	Bahia
Down Under	872336/2023	1684.26	100%	Granted	Mars GMN Brazil Ltda	Rare Earths	Bahia
Down Under	872356/2023	1757.46	100%	Granted	Mars GMN Brazil Ltda	Rare Earths	Bahia
Down Under	872414/2023	715.12	100%	Granted	Mars GMN Brazil Ltda	Rare Earths	Bahia
Down Under	872419/2023	1020.09	100%	Granted	Mars GMN Brazil Ltda	Rare Earths	Bahia
Down Under	872431/2023	1535.43	100%	Granted	Mars GMN Brazil Ltda	Rare Earths	Bahia
Down Under	872333/2023	1314.96	100%	Granted	Mars GMN Brazil Ltda	Rare Earths	Bahia
Down Under	872339/2023	1917.73	100%	Granted	Mars GMN Brazil Ltda	Rare Earths	Bahia
Down Under	872340/2023	1887.59	100%	Granted	Mars GMN Brazil Ltda	Rare Earths	Bahia
Down Under	872342/2023	1710.27	100%	Granted	Mars GMN Brazil Ltda	Rare Earths	Bahia
Down Under	872343/2023	1871.39	100%	Granted	Mars GMN Brazil Ltda	Rare Earths	Bahia
Down Under	872346/2023	1955.75	100%	Granted	Mars GMN Brazil Ltda	Rare Earths	Bahia
Down Under	870501/2024	1961.44	100%	Granted	Quantum Lítio Brasil LTDA	Rare Earths	Bahia
Down Under	870525/2024	1979.88	100%	Granted	Quantum Lítio Brasil LTDA	Rare Earths	Bahia
Down Under	870502/2024	1987.84	100%	Granted	Quantum Lítio Brasil LTDA	Rare Earths	Bahia
Down Under	870504/2024	1985.02	100%	Granted	Quantum Lítio Brasil LTDA	Rare Earths	Bahia
Down Under	870516/2024	1979.28	100%	Granted	Quantum Lítio Brasil LTDA	Rare Earths	Bahia
Down Under	870527/2024	1066.18	100%	Granted	Quantum Lítio Brasil LTDA	Rare Earths	Bahia
Down Under	870529/2024	1987.40	100%	Granted	Quantum Lítio Brasil LTDA	Rare Earths	Bahia
Down Under	870481/2024	1984.38	100%	Granted	Quantum Lítio Brasil LTDA	Rare Earths	Bahia
Down Under	870491/2024	1979.43	100%	Granted	Quantum Lítio Brasil LTDA	Rare Earths	Bahia
Down Under	870507/2024	1987.53	100%	Granted	Quantum Lítio Brasil LTDA	Rare Earths	Bahia
Down Under	870514/2024	1986.20	100%	Granted	Quantum Lítio Brasil LTDA	Rare Earths	Bahia
Down Under	870515/2024	1985.00	100%	Granted	Quantum Lítio Brasil LTDA	Rare Earths	Bahia
Down Under	870518/2024	1979.79	100%	Granted	Quantum Lítio Brasil LTDA	Rare Earths	Bahia
Down Under	870519/2024	1982.35	100%	Granted	Quantum Lítio Brasil LTDA	Rare Earths	Bahia
Down Under	870526/2024	1968.42	100%	Granted	Quantum Lítio Brasil LTDA	Rare Earths	Bahia
Down Under	870528/2024	1974.31	100%	Granted	Quantum Lítio Brasil LTDA	Rare Earths	Bahia
Down Under	870495/2024	1970.00	100%	Granted	Quantum Lítio Brasil LTDA	Rare Earths	Bahia

Down Under	870505/2024	1985.01	100%	Granted	Quantum Lítio Brasil LTDA	Rare Earths	Bahia
Down Under	870509/2024	1946.27	100%	Granted	Quantum Lítio Brasil LTDA	Rare Earths	Bahia
Down Under	870510/2024	1987.01	100%	Granted	Quantum Lítio Brasil LTDA	Rare Earths	Bahia
Down Under	870497/2024	1986.22	100%	Granted	Quantum Lítio Brasil LTDA	Rare Earths	Bahia
Down Under	870496/2024	1986.88	100%	Granted	Quantum Lítio Brasil LTDA	Rare Earths	Bahia
Down Under	870499/2024	1975.51	100%	Granted	Quantum Lítio Brasil LTDA	Rare Earths	Bahia
Down Under	870500/2024	1987.06	100%	Granted	Quantum Lítio Brasil LTDA	Rare Earths	Bahia
Down Under	870478/2024	1985.85	100%	Granted	Quantum Lítio Brasil LTDA	Rare Earths	Bahia
Down Under	870479/2024	1976.10	100%	Granted	Quantum Lítio Brasil LTDA	Rare Earths	Bahia
Down Under	870482/2024	1983.38	100%	Granted	Quantum Lítio Brasil LTDA	Rare Earths	Bahia
Down Under	870483/2024	1984.22	100%	Granted	Quantum Lítio Brasil LTDA	Rare Earths	Bahia
Down Under	870484/2024	1985.00	100%	Granted	Quantum Lítio Brasil LTDA	Rare Earths	Bahia
Down Under	870486/2024	1987.71	100%	Granted	Quantum Lítio Brasil LTDA	Rare Earths	Bahia
Down Under	870489/2024	1963.77	100%	Granted	Quantum Lítio Brasil LTDA	Rare Earths	Bahia
Down Under	870494/2024	1986.59	100%	Granted	Quantum Lítio Brasil LTDA	Rare Earths	Bahia
Down Under	870498/2024	1987.45	100%	Granted	Quantum Lítio Brasil LTDA	Rare Earths	Bahia
Down Under	870513/2024	1897.57	100%	Granted	Quantum Lítio Brasil LTDA	Rare Earths	Bahia
Down Under	870506/2024	1920.41	100%	Granted	Quantum Lítio Brasil LTDA	Rare Earths	Bahia
Down Under	872227/2023	1982.13	100%	Granted	Mars GMN Brazil Ltda	Rare Earths	Bahia
Down Under	872230/2023	1937.92	100%	Granted	Mars GMN Brazil Ltda	Rare Earths	Bahia
Down Under	871048/2024	1981.19	100%	Granted	Quantum Lítio Brasil LTDA	Niobium	Bahia
Down Under	871049/2024	1967.45	100%	Granted	Quantum Lítio Brasil LTDA	Niobium	Bahia
Down Under	871051/2024	1978.30	100%	Granted	Quantum Lítio Brasil LTDA	Niobium	Bahia
Down Under	871052/2024	1981.29	100%	Granted	Quantum Lítio Brasil LTDA	Niobium	Bahia
Down Under	871053/2024	1987.86	100%	Granted	Quantum Lítio Brasil LTDA	Niobium	Bahia
Down Under	871054/2024	1872.80	100%	Granted	Quantum Lítio Brasil LTDA	Niobium	Bahia
Down Under	871047/2024	1978.38	100%	Granted	Quantum Lítio Brasil LTDA	Niobium	Bahia
Down Under	871089/2024	1977.83	100%	Granted	Quantum Lítio Brasil LTDA	Niobium	Bahia
Down Under	871090/2024	1985.52	100%	Granted	Quantum Lítio Brasil LTDA	Niobium	Bahia
Down Under	871106/2024	1967.83	100%	Granted	Quantum Lítio Brasil LTDA	Niobium	Bahia
Down Under	871107/2024	1987.78	100%	Granted	Quantum Lítio Brasil LTDA	Niobium	Bahia
Down Under	871108/2024	1986.32	100%	Granted	Quantum Lítio Brasil LTDA	Niobium	Bahia
Down Under	871109/2024	1987.39	100%	Granted	Quantum Lítio Brasil LTDA	Niobium	Bahia
Down Under	871110/2024	1982.64	100%	Granted	Quantum Lítio Brasil LTDA	Niobium	Bahia
Down Under	871112/2024	1988.17	100%	Granted	Quantum Lítio Brasil LTDA	Niobium	Bahia
Down Under	871113/2024	1974.59	100%	Granted	Quantum Lítio Brasil LTDA	Niobium	Bahia
Down Under	871154/2024	1920.32	100%	Granted	Quantum Lítio Brasil LTDA	Niobium	Bahia
Down Under	871158/2024	1984.96	100%	Granted	Quantum Lítio Brasil LTDA	Niobium	Bahia
Down Under	871159/2024	1986.55	100%	Granted	Quantum Lítio Brasil LTDA	Niobium	Bahia
Down Under	871162/2024	1971.60	100%	Granted	Quantum Lítio Brasil LTDA	Niobium	Bahia
Down Under	871163/2024	1985.17	100%	Granted	Quantum Lítio Brasil LTDA	Niobium	Bahia
Down Under	871164/2024	1986.27	100%	Granted	Quantum Lítio Brasil LTDA	Niobium	Bahia
Down Under	871167/2024	1980.38	100%	Granted	Quantum Lítio Brasil LTDA	Niobium	Bahia
Down Under	871168/2024	1986.06	100%	Granted	Quantum Lítio Brasil LTDA	Niobium	Bahia
Down Under	871169/2024	1978.19	100%	Granted	Quantum Lítio Brasil LTDA	Niobium	Bahia
Down Under	871173/2024	1985.16	100%	Granted	Quantum Lítio Brasil LTDA	Niobium	Bahia
Down Under	871189/2024	1982.08	100%	Granted	Quantum Lítio Brasil LTDA	Rare Earths	Bahia

Down Under	871137/2024	1971.21	100%	Granted	Quantum Litio Brasil LTDA	Niobium	Bahia
Down Under	871171/2024	1944.83	100%	Granted	Quantum Litio Brasil LTDA	Niobium	Bahia
Down Under	871172/2024	1430.22	100%	Granted	Quantum Litio Brasil LTDA	Niobium	Bahia
Down Under	871165/2024	1879.43	100%	Granted	Quantum Litio Brasil LTDA	Niobium	Bahia
Down Under	870485/2024	1963.49	100%	Granted	Quantum Litio Brasil LTDA	Rare Earths	Bahia
Down Under	870492/2024	1965.62	100%	Granted	Quantum Litio Brasil LTDA	Rare Earths	Bahia
Down Under	870508/2024	1983.63	100%	Granted	Quantum Litio Brasil LTDA	Rare Earths	Bahia
Down Under	870487/2024	1981.80	100%	Granted	Quantum Litio Brasil LTDA	Rare Earths	Bahia
Down Under	870490/2024	1987.06	100%	Granted	Quantum Litio Brasil LTDA	Rare Earths	Bahia
Down Under	871111/2024	995.03	100%	Granted	Quantum Litio Brasil LTDA	Niobium	Bahia
Down Under	870178/2024	90.38	100%	Application	Mars GMN Brazil Ltda	Rare Earths	Bahia
Down Under	870179/2024	28.84	100%	Application	Mars GMN Brazil Ltda	Rare Earths	Bahia
Down Under	870177/2024	680.26	100%	Application	Mars GMN Brazil Ltda	Rare Earths	Bahia
Down Under	870180/2024	290.56	100%	Application	Mars GMN Brazil Ltda	Rare Earths	Bahia
Down Under	870181/2024	119.61	100%	Application	Mars GMN Brazil Ltda	Rare Earths	Bahia
Down Under	871188/2024	1973.60	100%	Application	Quantum Litio Brasil LTDA	Rare Earths	Bahia
Iguatu	800073/2022	1940.28	75%	Granted	Mars GMN Brazil Ltda	Copper	Ceara
Iguatu	800074/2022	1897.47	75%	Granted	Mars GMN Brazil Ltda	Copper	Ceara
Iguatu	800075/2022	1861.87	75%	Granted	Mars GMN Brazil Ltda	Copper	Ceara
Iguatu	800077/2022	1952.65	75%	Granted	Mars GMN Brazil Ltda	Copper	Ceara
Iguatu	800078/2022	1932.34	75%	Granted	Mars GMN Brazil Ltda	Copper	Ceara
Iguatu	800160/2022	1999.45	75%	Granted	Tatiana Barbosa de Souza Libardi	Copper	Ceara
Iguatu	800144/2022	1969.50	75%	Granted	Tatiana Barbosa de Souza Libardi	Copper	Ceara
Iguatu	800145/2022	1991.66	75%	Granted	Tatiana Barbosa de Souza Libardi	Copper	Ceara
Iguatu	800096/2022	1992.26	75%	Granted	Tatiana Barbosa de Souza Libardi	Copper	Ceara
Iguatu	800097/2022	1961.62	75%	Granted	Tatiana Barbosa de Souza Libardi	Copper	Ceara
Iguatu	800102/2022	1991.99	75%	Granted	Mars GMN Brazil Ltda	Copper	Ceara
Iguatu	800105/2022	1988.31	75%	Granted	Mars GMN Brazil Ltda	Copper	Ceara
Iguatu	800110/2022	1984.22	75%	Granted	Mars GMN Brazil Ltda	Copper	Ceara
Iguatu	800112/2022	1928.39	75%	Granted	Mars GMN Brazil Ltda	Copper	Ceara
Iguatu	800121/2022	1990.50	75%	Granted	Mars GMN Brazil Ltda	Copper	Ceara
Iguatu	800126/2022	1990.09	75%	Granted	Mars GMN Brazil Ltda	Copper	Ceara
Iguatu	800127/2022	1990.01	75%	Granted	Mars GMN Brazil Ltda	Copper	Ceara
Iguatu	800137/2022	1977.91	75%	Granted	Mars GMN Brazil Ltda	Copper	Ceara
Iguatu	800139/2022	1984.97	75%	Granted	Tatiana Barbosa de Souza Libardi	Copper	Ceara
Iguatu	800154/2022	1971.14	75%	Granted	Tatiana Barbosa de Souza Libardi	Copper	Ceara
Iguatu	800157/2022	1999.16	75%	Granted	Tatiana Barbosa de Souza Libardi	Copper	Ceara
Iguatu	800158/2022	1988.99	75%	Granted	Tatiana Barbosa de Souza Libardi	Copper	Ceara
Iguatu	800159/2022	1988.37	75%	Granted	Tatiana Barbosa de Souza Libardi	Copper	Ceara
Iguatu	800141/2022	1973.33	75%	Granted	Tatiana Barbosa de Souza Libardi	Copper	Ceara
Iguatu	800143/2022	1928.64	75%	Granted	Tatiana Barbosa de Souza Libardi	Copper	Ceara
Iguatu	800147/2022	1993.21	75%	Granted	Tatiana Barbosa de Souza Libardi	Copper	Ceara
Iguatu	800148/2022	1993.02	75%	Granted	Tatiana Barbosa de Souza Libardi	Copper	Ceara
Iguatu	800149/2022	1988.80	75%	Granted	Tatiana Barbosa de Souza Libardi	Copper	Ceara



Iguatu	800150/2022	1993.35	75%	Granted	Mars GMN Brazil Ltda	Copper	Ceara
Iguatu	800151/2022	1992.99	75%	Granted	Tatiana Barbosa de Souza Libardi	Copper	Ceara
Iguatu	800152/2022	1993.17	75%	Granted	Tatiana Barbosa de Souza Libardi	Copper	Ceara
Iguatu	800163/2022	1965.63	75%	Granted	Tatiana Barbosa de Souza Libardi	Copper	Ceara
Iguatu	800101/2022	1998.52	75%	Granted	Tatiana Barbosa de Souza Libardi	Copper	Ceara
Iguatu	800107/2022	1929.28	75%	Granted	Mars GMN Brazil Ltda	Copper	Ceara
Iguatu	800108/2022	1911.98	75%	Granted	Tatiana Barbosa de Souza Libardi	Copper	Ceara
Iguatu	800109/2022	1988.41	75%	Granted	Tatiana Barbosa de Souza Libardi	Copper	Ceara
Iguatu	800115/2022	1977.38	75%	Granted	Mars GMN Brazil Ltda	Copper	Ceara
Iguatu	800116/2022	1994.08	75%	Granted	Mars GMN Brazil Ltda	Copper	Ceara
Iguatu	800117/2022	1990.50	75%	Granted	Mars GMN Brazil Ltda	Copper	Ceara
Iguatu	800128/2022	1923.60	75%	Granted	Mars GMN Brazil Ltda	Copper	Ceara
Iguatu	800129/2022	1976.16	75%	Granted	Mars GMN Brazil Ltda	Copper	Ceara
Iguatu	800130/2022	1971.32	75%	Granted	Mars GMN Brazil Ltda	Copper	Ceara
Iguatu	800131/2022	1922.43	75%	Granted	Mars GMN Brazil Ltda	Copper	Ceara
Iguatu	800132/2022	1986.13	75%	Granted	Mars GMN Brazil Ltda	Copper	Ceara
Iguatu	800133/2022	1974.04	75%	Granted	Mars GMN Brazil Ltda	Copper	Ceara
Iguatu	800140/2022	1987.16	75%	Granted	Tatiana Barbosa de Souza Libardi	Copper	Ceara
Iguatu	800106/2022	1993.09	75%	Granted	Mars GMN Brazil Ltda	Copper	Ceara
Iguatu	800098/2022	1992.44	75%	Granted	Mars GMN Brazil Ltda	Copper	Ceara
Iguatu	800103/2022	1898.89	75%	Granted	Mars GMN Brazil Ltda	Copper	Ceara
Iguatu	800113/2022	1999.05	75%	Granted	Mars GMN Brazil Ltda	Copper	Ceara
Iguatu	800122/2022	1990.36	75%	Granted	Tatiana Barbosa de Souza Libardi	Copper	Ceara
Iguatu	800123/2022	1990.30	75%	Granted	Mars GMN Brazil Ltda	Copper	Ceara
Iguatu	800124/2022	1990.23	75%	Granted	Tatiana Barbosa de Souza Libardi	Copper	Ceara
Iguatu	800125/2022	1990.15	75%	Granted	Mars GMN Brazil Ltda	Copper	Ceara
Iguatu	800155/2022	1999.04	75%	Granted	Tatiana Barbosa de Souza Libardi	Copper	Ceara
Iguatu	800156/2022	1999.06	75%	Granted	Tatiana Barbosa de Souza Libardi	Copper	Ceara
Iguatu	800064/2022	1641.39	75%	Granted	Mars GMN Brazil Ltda	Copper	Ceara
Iguatu	800065/2022	1142.02	75%	Granted	Mars GMN Brazil Ltda	Copper	Ceara
Iguatu	800076/2022	1972.54	75%	Granted	Mars GMN Brazil Ltda	Copper	Ceara
Iguatu	800178/2022	1902.80	75%	Granted	Tatiana Barbosa de Souza Libardi	Copper	Ceara
Iguatu	800153/2022	1985.11	75%	Granted	Tatiana Barbosa de Souza Libardi	Copper	Ceara
Iguatu	800114/2022	1114.12	75%	Granted	Mars GMN Brazil Ltda	Copper	Ceara
Iguatu	800146/2022	1950.79	75%	Granted	Mars GMN Brazil Ltda	Copper	Ceara
Iguatu	800395/2024	1976.53	100%	Granted	Quantum Litio Brasil LTDA	Copper	Ceara
Iguatu	800029/2025	1981.24	100%	Application	Quantum Litio Brasil LTDA	Copper	Ceara
Iguatu	800030/2025	1984.52	100%	Application	Quantum Litio Brasil LTDA	Copper	Ceara
Iguatu	800031/2025	1981.79	100%	Application	Quantum Litio Brasil LTDA	Copper	Ceara
Iguatu	800032/2025	1963.47	100%	Application	Quantum Litio Brasil LTDA	Copper	Ceara
Iguatu	800396/2024	1979.02	100%	Application	Quantum Litio Brasil LTDA	Copper	Ceara
Iguatu	800397/2024	1973.11	100%	Application	Quantum Litio Brasil LTDA	Copper	Ceara
Iguatu	800410/2024	1976.93	100%	Application	Quantum Litio Brasil LTDA	Copper	Ceara
Iguatu	800411/2024	1982.20	100%	Application	Quantum Litio Brasil LTDA	Copper	Ceara
Iguatu	800412/2024	1980.19	100%	Application	Quantum Litio Brasil LTDA	Copper	Ceara

Juremal	870208/2022	262.39	75%	Granted	Quantum Litio Brasil LTDA	Lithium	Bahia
Juremal	870541/2022	1969.35	75%	Granted	Quantum Litio Brasil LTDA	Lithium	Bahia
Juremal	870542/2022	1999.75	75%	Granted	Quantum Litio Brasil LTDA	Lithium	Bahia
Juremal	870543/2022	1988.98	75%	Granted	Quantum Litio Brasil LTDA	Lithium	Bahia
Lithium Valley	831700/2022	540.56	75%	Granted	Tatiana Barbosa de Souza Libardi	Lithium	Minas Gerais
Lithium Valley	831703/2022	1898.71	75%	Granted	Tatiana Barbosa de Souza Libardi	Lithium	Minas Gerais
Lithium Valley	831698/2022	1455.51	75%	Granted	Tatiana Barbosa de Souza Libardi	Lithium	Minas Gerais
Lithium Valley	830618/2023	1985.55	75%	Granted	Mars Mines Brasil LTDA	Lithium	Minas Gerais
Lithium Valley	830557/2023	1982.85	75%	Granted	Mars Mines Brasil LTDA	Lithium	Minas Gerais
Lithium Valley	831702/2022	1623.69	75%	Granted	Tatiana Barbosa de Souza Libardi	Lithium	Minas Gerais
Lithium Valley	830616/2023	1973.78	75%	Granted	Mars Mines Brasil LTDA	Lithium	Minas Gerais
Lithium Valley	830542/2023	1987.08	75%	Granted	Mars Mines Brasil LTDA	Lithium	Minas Gerais
Lithium Valley	830544/2023	1986.91	75%	Granted	Mars Mines Brasil LTDA	Lithium	Minas Gerais
Lithium Valley	830546/2023	1981.50	75%	Granted	Mars Mines Brasil LTDA	Lithium	Minas Gerais
Lithium Valley	830547/2023	1981.70	75%	Granted	Mars Mines Brasil LTDA	Lithium	Minas Gerais
Lithium Valley	830549/2023	1496.30	75%	Granted	Mars Mines Brasil LTDA	Lithium	Minas Gerais
Lithium Valley	830553/2023	1969.81	75%	Granted	Mars Mines Brasil LTDA	Lithium	Minas Gerais
Lithium Valley	830556/2023	1980.98	75%	Granted	Mars Mines Brasil LTDA	Lithium	Minas Gerais
Lithium Valley	830558/2023	1980.92	75%	Granted	Mars Mines Brasil LTDA	Lithium	Minas Gerais
Lithium Valley	830559/2023	1985.11	75%	Granted	Mars Mines Brasil LTDA	Lithium	Minas Gerais
Lithium Valley	830560/2023	1985.68	75%	Granted	Mars Mines Brasil LTDA	Lithium	Minas Gerais
Lithium Valley	830562/2023	1975.75	75%	Granted	Mars Mines Brasil LTDA	Lithium	Minas Gerais
Lithium Valley	830563/2023	1975.77	75%	Granted	Mars Mines Brasil LTDA	Lithium	Minas Gerais
Lithium Valley	830564/2023	1985.35	75%	Granted	Mars Mines Brasil LTDA	Lithium	Minas Gerais
Lithium Valley	830565/2023	1973.03	75%	Granted	Mars Mines Brasil LTDA	Lithium	Minas Gerais
Lithium Valley	830566/2023	1985.29	75%	Granted	Mars Mines Brasil LTDA	Lithium	Minas Gerais
Lithium Valley	830567/2023	1982.90	75%	Granted	Mars Mines Brasil LTDA	Lithium	Minas Gerais
Lithium Valley	830568/2023	1931.79	75%	Granted	Mars Mines Brasil LTDA	Lithium	Minas Gerais
Lithium Valley	830605/2023	1976.04	75%	Granted	Mars Mines Brasil LTDA	Lithium	Minas Gerais
Lithium Valley	830617/2023	1987.17	75%	Granted	Mars Mines Brasil LTDA	Lithium	Minas Gerais
Lithium Valley	830606/2023	1971.54	75%	Granted	Mars Mines Brasil LTDA	Lithium	Minas Gerais
Lithium Valley	830612/2023	1971.58	75%	Granted	Mars Mines Brasil LTDA	Lithium	Minas Gerais
Lithium Valley	830609/2023	1983.76	75%	Granted	Mars Mines Brasil LTDA	Lithium	Minas Gerais
Lithium Valley	830610/2023	1976.26	75%	Granted	Mars Mines Brasil LTDA	Lithium	Minas Gerais
Lithium Valley	830611/2023	1808.55	75%	Granted	Mars Mines Brasil LTDA	Lithium	Minas Gerais
Lithium Valley	830607/2023	1984.11	75%	Granted	Mars Mines Brasil LTDA	Lithium	Minas Gerais
Lithium Valley	831204/2023	1980.59	75%	Granted	Mars GMN Brazil Ltda	Lithium	Minas Gerais
Lithium Valley	831217/2023	1986.33	75%	Granted	Mars GMN Brazil Ltda	Lithium	Minas Gerais
Lithium Valley	831218/2023	1985.63	75%	Granted	Mars GMN Brazil Ltda	Lithium	Minas Gerais
Lithium Valley	831219/2023	1984.80	75%	Granted	Mars GMN Brazil Ltda	Lithium	Minas Gerais
Lithium Valley	831203/2023	1983.51	75%	Granted	Mars GMN Brazil Ltda	Lithium	Minas Gerais
Lithium Valley	831215/2023	1987.45	75%	Granted	Mars GMN Brazil Ltda	Lithium	Minas Gerais
Lithium Valley	831216/2023	1987.96	75%	Granted	Mars GMN Brazil Ltda	Lithium	Minas Gerais
Lithium Valley	830622/2023	1987.45	75%	Granted	Mars Mines Brasil LTDA	Lithium	Minas Gerais
Lithium Valley	830554/2023	1995.48	75%	Granted	Mars Mines Brasil LTDA	Lithium	Minas Gerais
Lithium Valley	830569/2023	1972.77	75%	Granted	Mars Mines Brasil LTDA	Lithium	Minas Gerais
Salitre	871753/2022	1324.24	75%	Granted	Mars Mines Brasil Ltda	Phosphate	Bahia
Salitre	871754/2022	1164.10	75%	Granted	Mars Mines Brasil Ltda	Phosphate	Bahia
Salitre	871755/2022	1695.40	75%	Granted	Mars Mines Brasil Ltda	Phosphate	Bahia

Salitre	871756/2022	509.95	75%	Granted	Mars Mines Brasil Ltda	Phosphate	Bahia
Salitre	872267/2021	1958.72	100%	Granted	Fertfos Mineracao e Fertilizantes Ltda	Phosphate	Bahia
Sao Juliao	800249/2022	1986.16	75%	Granted	Tatiana Barbosa de Souza Libardi	Copper	Ceara
Sao Juliao	800250/2022	1998.32	75%	Granted	Tatiana Barbosa de Souza Libardi	Copper	Ceara
Sao Juliao	800318/2022	1988.27	75%	Granted	Tatiana Barbosa de Souza Libardi	Copper	Ceara
Sao Juliao	803055/2022	1994.55	75%	Granted	Tatiana Barbosa de Souza Libardi	Copper	Piaui
Sao Juliao	803035/2022	1993.94	75%	Granted	Tatiana Barbosa de Souza Libardi	Copper	Piaui
Sao Juliao	800317/2022	1984.82	75%	Granted	Tatiana Barbosa de Souza Libardi	Copper	Ceara
Sao Juliao	803326/2024	1981.20	100%	Granted	Quantum Litio Brasil LTDA	Copper	Piaui
Sao Juliao	803327/2024	1982.13	100%	Granted	Quantum Litio Brasil LTDA	Copper	Piaui
Serido Belt	848133/2022	1999.78	75%	Granted	Mars GMN Brazil Ltda	Lithium	Rio Grande do Norte
Serido Belt	848131/2022	1980.72	75%	Granted	Quantum Litio Brasil LTDA	Lithium	Rio Grande do Norte
Serido Belt	848134/2022	1104.27	75%	Granted	Tatiana Barbosa de Souza Libardi	Lithium	Rio Grande do Norte
Serido Belt	848135/2022	1955.29	75%	Granted	Mars GMN Brazil Ltda	Lithium	Rio Grande do Norte
Serido Belt	848397/2023	1984.30	100%	Granted	Mars GMN Brazil Ltda	Lithium	Rio Grande do Norte
Serido Belt	848396/2023	1821.31	100%	Granted	Mars GMN Brazil Ltda	Lithium	Rio Grande do Norte
Serido Belt	848395/2023	1942.57	100%	Granted	Mars GMN Brazil Ltda	Lithium	Rio Grande do Norte
Serido Belt	846115/2022	1998.77	75%	Application	Tatiana Barbosa de Souza Libardi	Lithium	Paraiba
Solonopole	800416/2022	1976.35	75%	Granted	Tatiana Barbosa de Souza Libardi	Lithium	Ceara
Solonopole	800417/2022	1976.35	75%	Granted	Tatiana Barbosa de Souza Libardi	Lithium	Ceara
Solonopole	800418/2022	1977.29	75%	Granted	Tatiana Barbosa de Souza Libardi	Lithium	Ceara
Solonopole	800419/2022	1987.36	75%	Granted	Tatiana Barbosa de Souza Libardi	Lithium	Ceara
Solonopole	800420/2022	1973.73	75%	Granted	Tatiana Barbosa de Souza Libardi	Lithium	Ceara
Solonopole	800421/2022	1990.48	75%	Granted	Tatiana Barbosa de Souza Libardi	Lithium	Ceara
Solonopole	800422/2022	1979.94	75%	Granted	Tatiana Barbosa de Souza Libardi	Lithium	Ceara
Solonopole	800423/2022	1995.76	75%	Granted	Tatiana Barbosa de Souza Libardi	Lithium	Ceara
Solonopole	800424/2022	1962.42	75%	Granted	Tatiana Barbosa de Souza Libardi	Lithium	Ceara
Solonopole	800425/2022	1997.13	75%	Granted	Tatiana Barbosa de Souza Libardi	Lithium	Ceara
Solonopole	800426/2022	1966.24	75%	Granted	Tatiana Barbosa de Souza Libardi	Lithium	Ceara
Solonopole	800427/2022	1966.24	75%	Granted	Tatiana Barbosa de Souza Libardi	Lithium	Ceara
Solonopole	800428/2022	1991.00	75%	Granted	Tatiana Barbosa de Souza Libardi	Lithium	Ceara
Solonopole	800429/2022	1989.47	75%	Granted	Tatiana Barbosa de Souza Libardi	Lithium	Ceara
Ararenda	800330/2025	1983.89	100%	Application	Quantum Litio Brasil Ltda	Copper	Ceara
Ararenda	800331/2025	1984.48	200%	Application	Quantum Litio Brasil Ltda	Copper	Ceara
Ararenda	800332/2025	1985.58	300%	Application	Quantum Litio Brasil Ltda	Copper	Ceara
Ararenda	800329/2025	1976.17	400%	Application	Quantum Litio Brasil Ltda	Copper	Ceara
Ararenda	800328/2025	1978.86	500%	Application	Quantum Litio Brasil Ltda	Copper	Ceara
Ararenda	800334/2025	1986.75	600%	Application	Quantum Litio Brasil Ltda	Copper	Ceara



<b>Ararenda</b>	800326/2025	1974.69	700%	Application	Quantum Litio Brasil Ltda	Copper	Ceara
<b>Ararenda</b>	800327/2025	1975.56	800%	Application	Quantum Litio Brasil Ltda	Copper	Ceara

### Mining Tenements acquired during the quarter and their location

<b>Ararenda</b>	800330/2025	1983.89	100%	Application	Quantum Litio Brasil Ltda	Copper	Ceara
<b>Ararenda</b>	800331/2025	1984.48	200%	Application	Quantum Litio Brasil Ltda	Copper	Ceara
<b>Ararenda</b>	800332/2025	1985.58	300%	Application	Quantum Litio Brasil Ltda	Copper	Ceara
<b>Ararenda</b>	800329/2025	1976.17	400%	Application	Quantum Litio Brasil Ltda	Copper	Ceara
<b>Ararenda</b>	800328/2025	1978.86	500%	Application	Quantum Litio Brasil Ltda	Copper	Ceara
<b>Ararenda</b>	800334/2025	1986.75	600%	Application	Quantum Litio Brasil Ltda	Copper	Ceara
<b>Ararenda</b>	800326/2025	1974.69	700%	Application	Quantum Litio Brasil Ltda	Copper	Ceara
<b>Ararenda</b>	800327/2025	1975.56	800%	Application	Quantum Litio Brasil Ltda	Copper	Ceara

### Mining Tenements disposed of during the quarter and their location

Nil

### Farm-in or farm-out agreements entered into in the quarter

Nil

### Beneficial percentage interests held in farm-in or farm-out agreements at the end of the quarter

The below tenements are subject to an Earn-in Agreement with Alderan Resources Limited of up to 80%. At present Gold Mountain holds them at 75%.

Project Name	Tenement ID	Area (ha)	Company or Representative	Commodity	State
<b>Salitre</b>	871756/2022	509.95	MARS MINES BRASIL LTDA	Lithium	Bahia
<b>Salitre</b>	871753/2022	1324.24	MARS MINES BRASIL LTDA	Copper	Bahia
<b>Salitre</b>	871755/2022	1695.4	MARS MINES BRASIL LTDA	Lithium	Bahia
<b>Salitre</b>	871754/2022	1164.1	MARS MINES BRASIL LTDA	Lithium	Bahia

### ASX LR 5.3.5:

Payments to related parties of the entity and their associates during the June 2025 quarter approximately \$182,000 was paid to Directors and associates for director and consulting fees.

## Appendix 5B

### Mining exploration entity or oil and gas exploration entity quarterly cash flow report

Name of entity

Gold Mountain Limited

ABN

79 115 845 942

Quarter ended ("current quarter")

30 June 2025

Consolidated statement of cash flows		Current quarter \$A'000	Year to date (12 months) \$A'000
<b>1.</b>	<b>Cash flows from operating activities</b>		
1.1	Receipts from customers		
1.2	Payments for		
	(a) exploration & evaluation	-	-
	(b) development	-	-
	(c) production	-	-
	(d) staff costs	-	-
	(e) administration and corporate costs	(444)	(1,304)
1.3	Dividends received (see note 3)	-	-
1.4	Interest received	1	9
1.5	Interest and other costs of finance paid	-	-
1.6	Income taxes paid	-	-
1.7	Government grants and tax incentives	-	-
1.8	Other (provide details if material)	-	-
<b>1.9</b>	<b>Net cash from / (used in) operating activities</b>	<b>(443)</b>	<b>(1,295)</b>

<b>2.</b>	<b>Cash flows from investing activities</b>		
2.1	Payments to acquire or for:		
	(a) entities	-	-
	(b) tenements	-	-
	(c) property, plant and equipment	-	-
	(d) exploration & evaluation	(1,209)	(3,640)
	(e) investments	-	-
	(f) other non-current assets	-	-

<b>Consolidated statement of cash flows</b>		<b>Current quarter \$A'000</b>	<b>Year to date (12 months) \$A'000</b>
2.2	Proceeds from the disposal of:		
	(a) entities	-	-
	(b) tenements	-	-
	(c) property, plant and equipment	-	-
	(d) investments	-	-
	(e) other non-current assets	-	-
2.3	Cash flows from loans to other entities	-	-
2.4	Dividends received (see note 3)	-	-
2.5	Other (provide details if material)	-	-
<b>2.6</b>	<b>Net cash from / (used in) investing activities</b>	<b>(1,209)</b>	<b>(3,640)</b>

<b>3.</b>	<b>Cash flows from financing activities</b>		
3.1	Proceeds from issues of equity securities (excluding convertible debt securities)	3,057	5,588
3.2	Proceeds from issue of convertible debt securities	-	-
3.3	Proceeds from exercise of options	-	-
3.4	Transaction costs related to issues of equity securities or convertible debt securities	-	-
3.5	Proceeds from borrowings	-	26
3.6	Repayment of borrowings	(7)	(23)
3.7	Transaction costs related to loans and borrowings	-	-
3.8	Dividends paid	-	-
3.9	Other – Repayment of lease liability	-	-
<b>3.10</b>	<b>Net cash from / (used in) financing activities</b>	<b>3,050</b>	<b>5,591</b>

<b>4.</b>	<b>Net increase / (decrease) in cash and cash equivalents for the period</b>		
4.1	Cash and cash equivalents at beginning of period	121	866
4.2	Net cash from / (used in) operating activities (item 1.9 above)	(443)	(1,295)
4.3	Net cash from / (used in) investing activities (item 2.6 above)	(1,209)	(3,640)
4.4	Net cash from / (used in) financing activities (item 3.10 above)	3,050	5,588



<b>Consolidated statement of cash flows</b>		<b>Current quarter \$A'000</b>	<b>Year to date (12 months) \$A'000</b>
4.5	Effect of movement in exchange rates on cash held	-	-
<b>4.6</b>	<b>Cash and cash equivalents at end of period</b>	<b>1,519</b>	<b>1,519</b>

<b>5.</b>	<b>Reconciliation of cash and cash equivalents</b> at the end of the quarter (as shown in the consolidated statement of cash flows) to the related items in the accounts	<b>Current quarter \$A'000</b>	<b>Previous quarter \$A'000</b>
5.1	Bank balances	1,519	121
5.2	Call deposits	-	-
5.3	Bank overdrafts	-	-
5.4	Other (provide details)	-	-
<b>5.5</b>	<b>Cash and cash equivalents at end of quarter (should equal item 4.6 above)</b>	<b>1,519</b>	<b>121</b>

<b>6.</b>	<b>Payments to related parties of the entity and their associates</b>	<b>Current quarter \$A'000</b>
6.1	Aggregate amount of payments to related parties and their associates included in item 1	182
6.2	Aggregate amount of payments to related parties and their associates included in item 2	-
<i>Note: if any amounts are shown in items 6.1 or 6.2, your quarterly activity report must include a description of, and an explanation for, such payments.</i>		

## Mining exploration entity or oil and gas exploration entity quarterly cash flow report

<b>7.</b>	<b>Financing facilities</b> <i>Note: the term "facility" includes all forms of financing arrangements available to the entity.</i> <i>Add notes as necessary for an understanding of the sources of finance available to the entity.</i>	<b>Total facility amount at quarter end \$A'000</b>	<b>Amount drawn at quarter end \$A'000</b>
7.1	Loan facilities	-	-
7.2	Credit standby arrangements	-	-
7.3	Other (please specify)	-	-
7.4	<b>Total financing facilities</b>	-	-
7.5	<b>Unused financing facilities available at quarter end</b>		-
7.6	Include in the box below a description of each facility above, including the lender, interest rate, maturity date and whether it is secured or unsecured. If any additional financing facilities have been entered into or are proposed to be entered into after quarter end, include a note providing details of those facilities as well.		

<b>8.</b>	<b>Estimated cash available for future operating activities</b>	<b>\$A'000</b>
8.1	Net cash from / (used in) operating activities (item 1.9)	(443)
8.2	(Payments for exploration & evaluation classified as investing activities) (item 2.1(d))	(1,209)
8.3	Total relevant outgoings (item 8.1 + item 8.2)	(1,652)
8.4	Cash and cash equivalents at quarter end (item 4.6)	1,509
8.5	Unused finance facilities available at quarter end (item 7.5)	-
8.6	Total available funding (item 8.4 + item 8.5)	1,509
8.7	<b>Estimated quarters of funding available (item 8.6 divided by item 8.3)</b>	0.92
<i>Note: if the entity has reported positive relevant outgoings (ie a net cash inflow) in item 8.3, answer item 8.7 as "N/A". Otherwise, a figure for the estimated quarters of funding available must be included in item 8.7.</i>		
8.8	If item 8.7 is less than 2 quarters, please provide answers to the following questions:	
8.8.1	Does the entity expect that it will continue to have the current level of net operating cash flows for the time being and, if not, why not?	
Answer: Yes		
8.8.2	Has the entity taken any steps, or does it propose to take any steps, to raise further cash to fund its operations and, if so, what are those steps and how likely does it believe that they will be successful?	
Answer: Yes, the Company will look to raise further capital to expand the Company's drilling programs. The Company believes that the capital raising efforts will be successful.		
8.8.3	Does the entity expect to be able to continue its operations and to meet its business objectives and, if so, on what basis?	
Answer: Yes, raising additional funds.		
<i>Note: where item 8.7 is less than 2 quarters, all of questions 8.8.1, 8.8.2 and 8.8.3 above must be answered.</i>		

## **Compliance statement**

- 1 This statement has been prepared in accordance with accounting standards and policies which comply with Listing Rule 19.11A.
- 2 This statement gives a true and fair view of the matters disclosed.

Date: 31 July 2025

Authorised by: **By the Board**.....  
(Name of body or officer authorising release – see note 4)

## **Notes**

1. This quarterly cash flow report and the accompanying activity report provide a basis for informing the market about the entity's activities for the past quarter, how they have been financed and the effect this has had on its cash position. An entity that wishes to disclose additional information over and above the minimum required under the Listing Rules is encouraged to do so.
2. If this quarterly cash flow report has been prepared in accordance with Australian Accounting Standards, the definitions in, and provisions of, *AASB 6: Exploration for and Evaluation of Mineral Resources* and *AASB 107: Statement of Cash Flows* apply to this report. If this quarterly cash flow report has been prepared in accordance with other accounting standards agreed by ASX pursuant to Listing Rule 19.11A, the corresponding equivalent standards apply to this report.
3. Dividends received may be classified either as cash flows from operating activities or cash flows from investing activities, depending on the accounting policy of the entity.
4. If this report has been authorised for release to the market by your board of directors, you can insert here: "By the board". If it has been authorised for release to the market by a committee of your board of directors, you can insert here: "By the [name of board committee – eg Audit and Risk Committee]". If it has been authorised for release to the market by a disclosure committee, you can insert here: "By the Disclosure Committee".
5. If this report has been authorised for release to the market by your board of directors and you wish to hold yourself out as complying with recommendation 4.2 of the ASX Corporate Governance Council's *Corporate Governance Principles and Recommendations*, the board should have received a declaration from its CEO and CFO that, in their opinion, the financial records of the entity have been properly maintained, that this report complies with the appropriate accounting standards and gives a true and fair view of the cash flows of the entity, and that their opinion has been formed on the basis of a sound system of risk management and internal control which is operating effectively.