

ASX Announcement: 17 July 2025

## DRILLING COMMENCES AT LEONORA SOUTH GOLD TARGETS

### Highlights

- 3,000m reverse-circulation (RC) drilling program commences at highly prospective targets, Challenge and Eclipse
- The program aims to confirm continuity and grade of mineralisation and follows up significant shallow gold intersections from historic drilling
- Both prospects along strike from Asra's JORC 2012 Mineral Resource Estimate of 21,600oz at 2.1g/t Au at Sapphire
- Drilling is expected to conclude in August, with assays expected 4-6 weeks after the program completion

**Asra Minerals Limited (ASX: ASR; “Asra” or “the Company”)** is pleased to advise that it has commenced a 3,000m RC drilling campaign at the Challenge and Eclipse prospects within the Leonora South Gold Project (**Leonora South** or the **Project**).

Drilling has commenced on a ~50-hole program at the prospective Challenge and Eclipse prospects, located within 500m of the existing JORC 2012 Mineral Resource at the adjacent Sapphire deposit.

The current program aims to confirm the grade and continuity of encouraging mineralisation from historical drilling and intercepts.

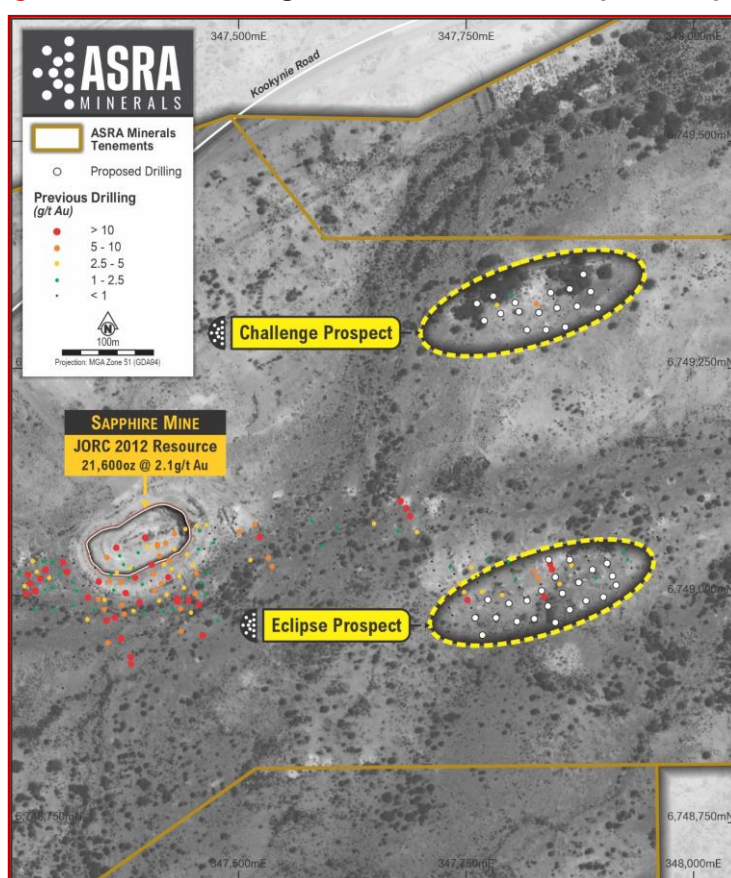
Results from this campaign will inform the Company's geological understanding and assessment of potential resources at these two prospects.

### **Asra Minerals Managing Director, Paul Stephen:**

*“We're excited to have drilling underway at Leonora South, targeting the high-priority Challenge and Eclipse prospects. These prospects lie just 500 metres from our existing Sapphire resource and have already returned impressive results in historical drilling. This program is a key step in unlocking the broader potential of the Leonora Gold Project and building on the strong foundation already established.”*



**Figure 1 & 2: RC Drilling at Leonora South – Eclipse Prospect**



**Figure 3: Planned RC Drilling at Leonora South<sup>1</sup>**

<sup>1</sup> Refer to ASX announcement "Drilling Confirms High Grade Gold at Kookynie East" on 23 October 2024 for the historical results.

**This announcement has been authorised for release by the Board.**

**INVESTORS:**

Paul Stephen  
Managing Director  
Asra Minerals Ltd  
info@asraminerals.com.au

**MEDIA:**

Madeline Howson  
Investor Relations  
Discovir Investor Relations  
madeline@discovir.com.au

**Forward looking statements disclaimer**

This announcement contains certain “forward-looking statements” and comments about future matters. Forward-looking statements can generally be identified by the use of forward-looking words such as, “expect”, “anticipate”, “likely”, “intend”, “should”, “estimate”, “target”, “outlook”, and other similar expressions and include, but are not limited to, indications of, and guidance or outlook on, future events, growth opportunities, exploration activities or the financial position or performance of the Company. You are cautioned not to place undue reliance on forward-looking statements. Any such statements, opinions and estimates in this release speak only as of the date hereof, are preliminary views and are based on assumptions and contingencies subject to change without notice. Forward-looking statements are provided as a general guide only. There can be no assurance that actual outcomes will not differ materially from these forward-looking statements. Any such forward looking statement also inherently involves known and unknown risks, uncertainties and other factors and may involve significant elements of subjective judgement and assumptions that may cause actual results, performance and achievements to differ. Except as required by law the Company undertakes no obligation to finalise, check, supplement, revise or update forward-looking statements in the future, regardless of whether new information, future events or results or other factors affect the information contained in this announcement.

**Competent Person Statement**

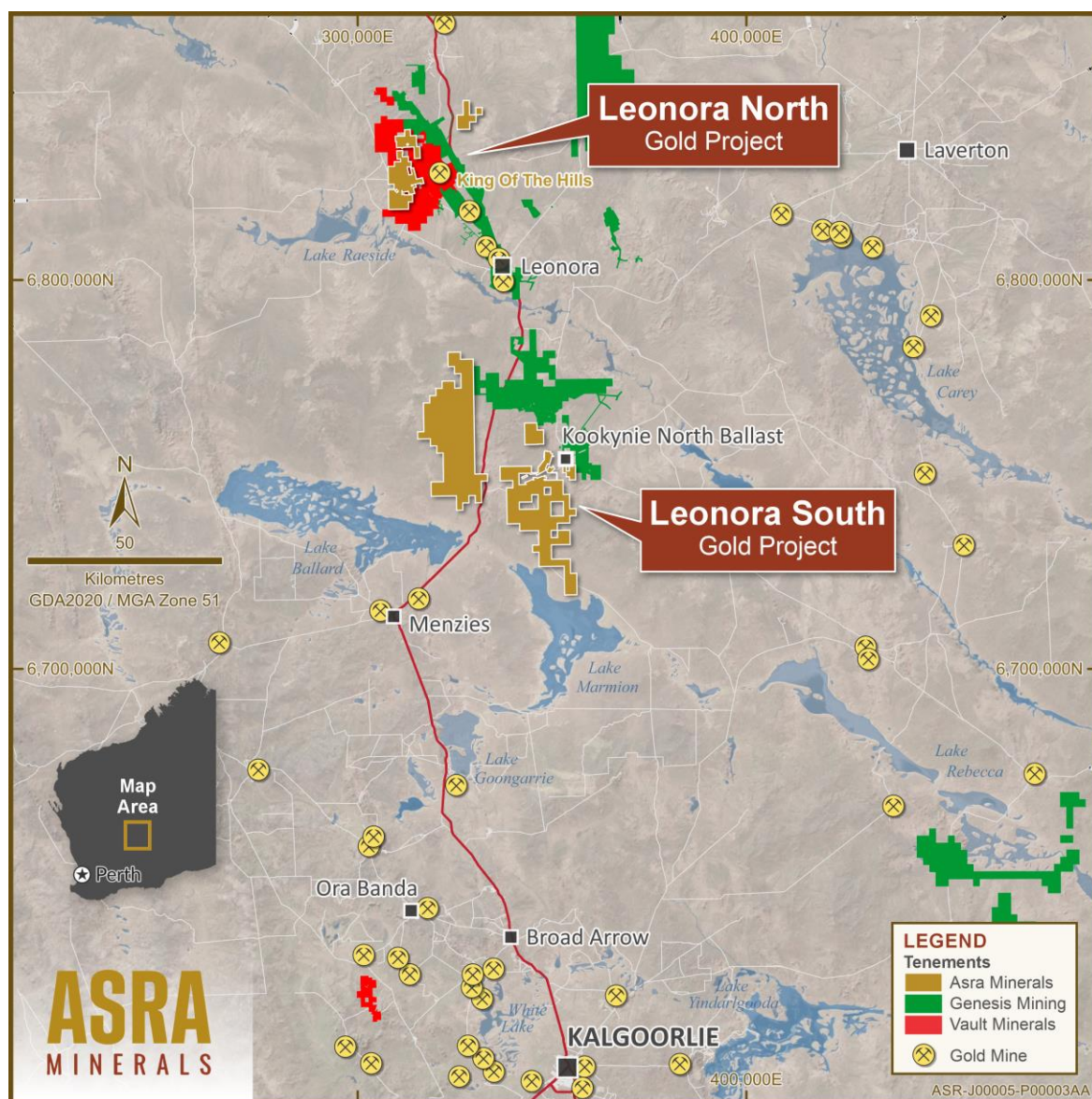
For all historical results referred in this announcement, please refer to ASX announcement dated 23 October 2024 titled “Drilling Confirms High Grade Gold at Kookynie East”. The Company confirms that it is not aware of any new information or data that materially affects the information included in the original market announcement.

The information in this announcement that relates to the Orion-Sapphire Mineral Resources is contained in the ASX announcements released on 28 May 2024. The information in this announcement that relates to the gold Mineral Resources for the Mt Stirling Project is contained in the ASX announcements released on 25 February 2019, 29 January 2020 and 5 September 2022. The Company confirms that it is not aware of any new information or data that materially affects the information in the relevant market announcements, and that all material assumptions and technical parameters underpinning the estimates in the relevant announcement continue to apply and have not materially changed. that the Company confirms that the form and context in which the Competent Persons findings are presented have not been materially modified from the original announcements.



## About Asra Minerals Leonora Gold Projects

Asra Minerals' Leonora Gold Project comprises key project areas to the North and South of Leonora in the prolific region of Western Australia's Eastern Goldfields. Asra Minerals' Leonora Gold Project comprises key project areas to the North and South of Leonora in the prolific region of Western Australia's Eastern Goldfields. The projects cover a large area of prospective greenstone belts, with geological similarities to nearby multi-million-ounce gold deposits and operating mines, Asra's substantial exploration position provides a strong foundation for growth and consolidation in this renowned gold region.



**Figure 4: Asra's Leonora Landholdings**

### Leonora North – Mt Stirling

- Located 40km northeast of Leonora, Western Australia, within a prolific gold mining district.
- Situated in the Eastern Goldfields Super terrane of the Yilgarn Craton, the area is known for orogenic gold deposits.
- Close proximity to significant gold mines, including Vault Minerals' 6Moz King of the Hills mine and Genesis Minerals' 2Moz Leonora and Kookynie operations.
- Two JORC compliant gold resources:
  - Mt Stirling Viserion: 111koz at 1.6g/t Au (Inferred) and 26koz at 2.1g/t Au (Indicated)
  - Stirling Well: 15koz at 2.3g/t Au (Inferred)
- 12km of prospective ground along the Ursus Fault Line, with 9km yet to be explored.
- Identified targets east of the historic Diorite King Mine, which previously produced gold at high grades

### Leonora South – Kookynie

- Leonora South consists of 8 semi-contiguous mining licences, covering 549 km<sup>2</sup>.
- Located 60km south of Leonora in the Kookynie Goldfields, the area is known for high-grade gold discoveries, including the nearby Ulysses Operation with 850koz Au.
- JORC 2012 Mineral Resource Estimate of 48,000oz at 2.2g/t Au at the Orion-Sapphire Deposit.
- Recent drilling has shown mineralisation extends approximately 30m below previous intercepts, confirming gold grades at depth.
- Asra plans to expand resource estimates at Orion and Sapphire beyond the historical drilling limits of 100-150m below the surface.

### Asra Global Gold Mineral Resources

Asra's Gold Projects	Category	Tonnes	Gold Grade g/t Au	Gold Ounces
Leonora North - Viserion	Indicated	391,000	2.1	26,000
	Inferred	2,158,000	1.6	111,000
Leonora North - Stirling Well	Inferred	198,000	2.3	15,000
Leonora South - Niagara - Orion	Inferred	370,000	2.2	26,409
Leonora South - Niagara - Sapphire	Inferred	320,000	2.1	21,605
<b>TOTAL</b>		<b>3,437,000</b>	<b>1.82</b>	<b>200,064</b>

*Gold Deposits estimated in accordance with the JORC Code (2012) using 0.5 g/t Au cut-off*