



Finding the energy metals the world needs for a low-carbon future

Gold Discovery Opportunities in the Stavely Volcanic Belt

Update – 29 July 2025

Disclaimer



- This presentation contains only an overview of Stavely Minerals Limited (“Stavely” or the “Company”) and its activities and operations. The contents of this presentation, including matters relating to the geology and exploration potential of the Company’s projects, may rely on various assumptions and subjective interpretations which it is not possible to detail in this presentation and which have not been subject to any independent verification.
- This presentation contains a number of forward-looking statements. Known and unknown risks and uncertainties, and factors outside of the Company’s control, may cause the actual results, performance and achievements of the Company to differ materially from those expressed or implied in this presentation.
- To the maximum extent permitted by law, Stavely does not warrant the accuracy, currency or completeness of the information in this presentation, nor the future performance of the Company, and will not be responsible for any loss or damage arising from the use of the information.
- The information contained in this presentation is not a substitute for detailed investigation or analysis of any particular issue. Current and potential investors should seek independent advice before making any investment decision in regard to the Company or its activities.

A Modern Australian Energy Metals Growth Company



What does Stavely Minerals offer that is different?



BIG targets





Stavely Project

STAVELY MINERALS - FINDING THE COPPER THE WORLD NEEDS FOR A LOW-CARBON FUTURE

The Cayley Lode Mineral Resources Estimate



- **Discovery** – outstanding shallow high-grade copper-gold-silver discovery (September 2019), the Cayley Lode
- **Cayley Lode MRE¹** – 9.3Mt at 1.23% Cu, 0.23g/t Au and 7.1g/t Ag
- **Total Resources** – 28.3Mt at 0.75% Cu, 0.11g/t Au and 3.5g/t Ag
- **Containing** – 210,000t Cu, 100,000oz Au, 3.2Moz Ag and 2.4kt Zn
- Mineralisation from surface to 300m depth, remains open



¹ Reported in compliance with the JORC Code 2012, see ASX announcement 14 June 2022, see Appendix 1 for classifications

Cayley Lode bornite mineralisation - photo from ASX announcement 11 September 2019

Stavely Project – Control Major Cu-Au Fertile Volcanic Belts



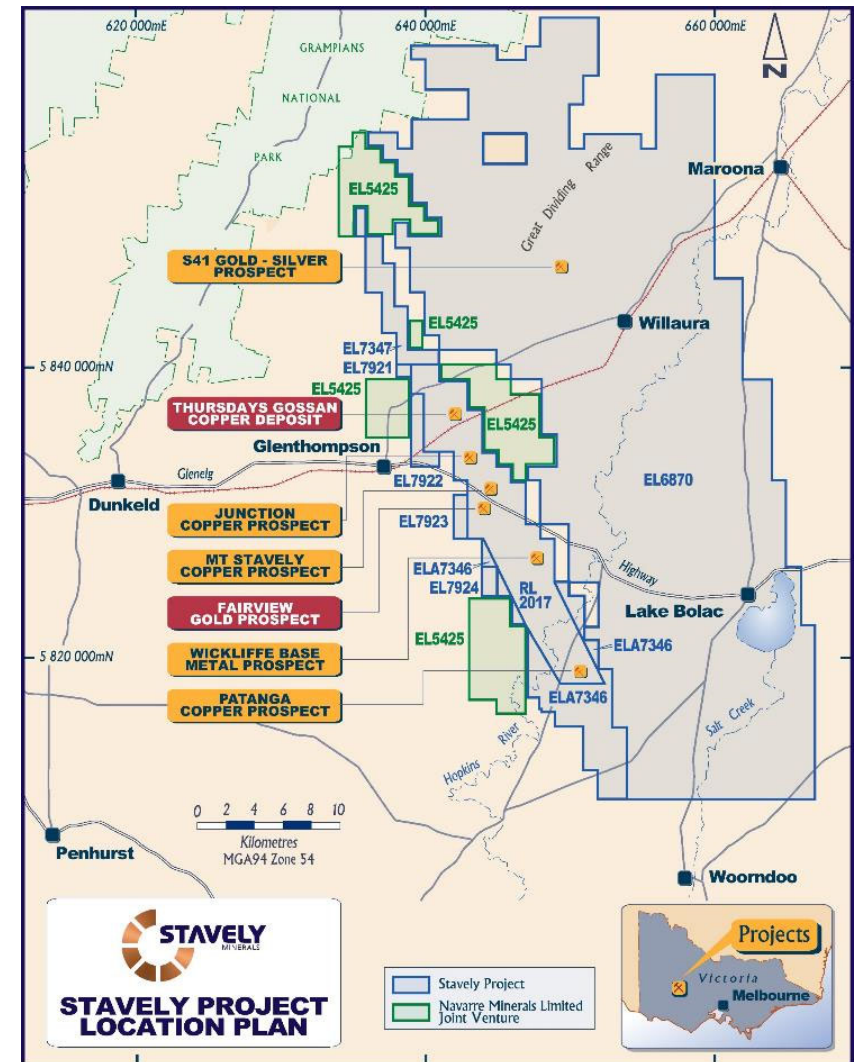
- **Discovery**– outstanding shallow high-grade copper-gold-silver discovery (September 2019), the **Cayley Lode**¹
- **Multiple regional gold discovery opportunities:**
 - Fairview North gold prospect – great recent drilling results²
 - Fairview South gold prospect – great recent drilling results³
 - S41 breccia-hosted gold – 2km x 750m breccia pipe
 - Only 1 x diamond drill hole in large system, scale potential⁴
- Stavely Minerals controls tenure over some 130km of various components of the Stavely Arc, an Andean-style continental margin volcanic arc that is well preserved and prospective for several world-class styles of gold mineralisation.

¹ See ASX announcement 14 June 2022, Appendix 1

² See ASX announcement 17 July 2025

³ See ASX announcement 14 July 2025

⁴ See ASX announcement 23 May 2023 and 10 June 2025





Gold Discovery Opportunities

STAVELY MINERALS - FINDING THE COPPER THE WORLD NEEDS FOR A LOW-CARBON FUTURE

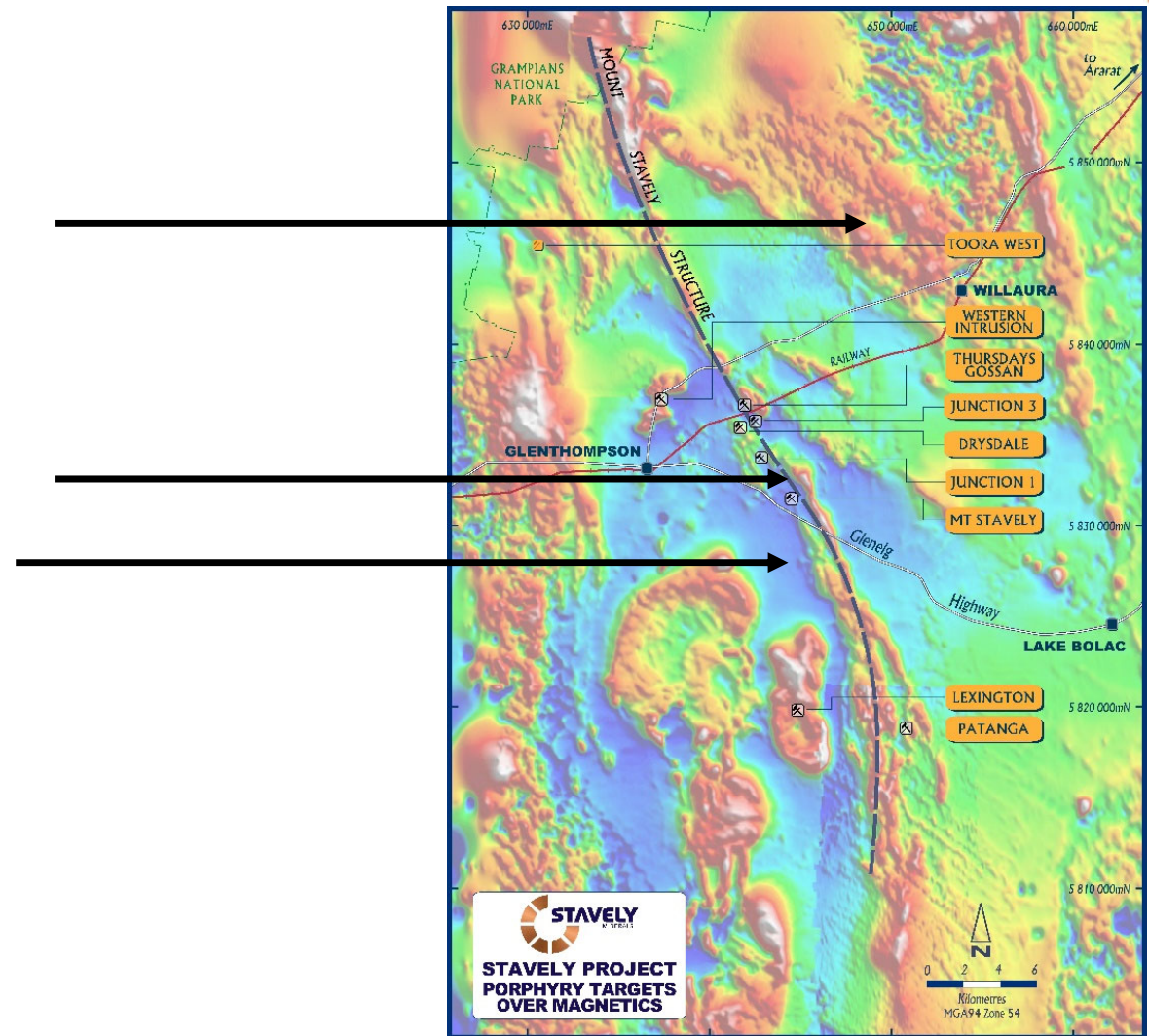
Gold Discovery Opportunities



S41 breccia-hosted gold prospect

Fairview North gold prospect

Fairview South gold prospect

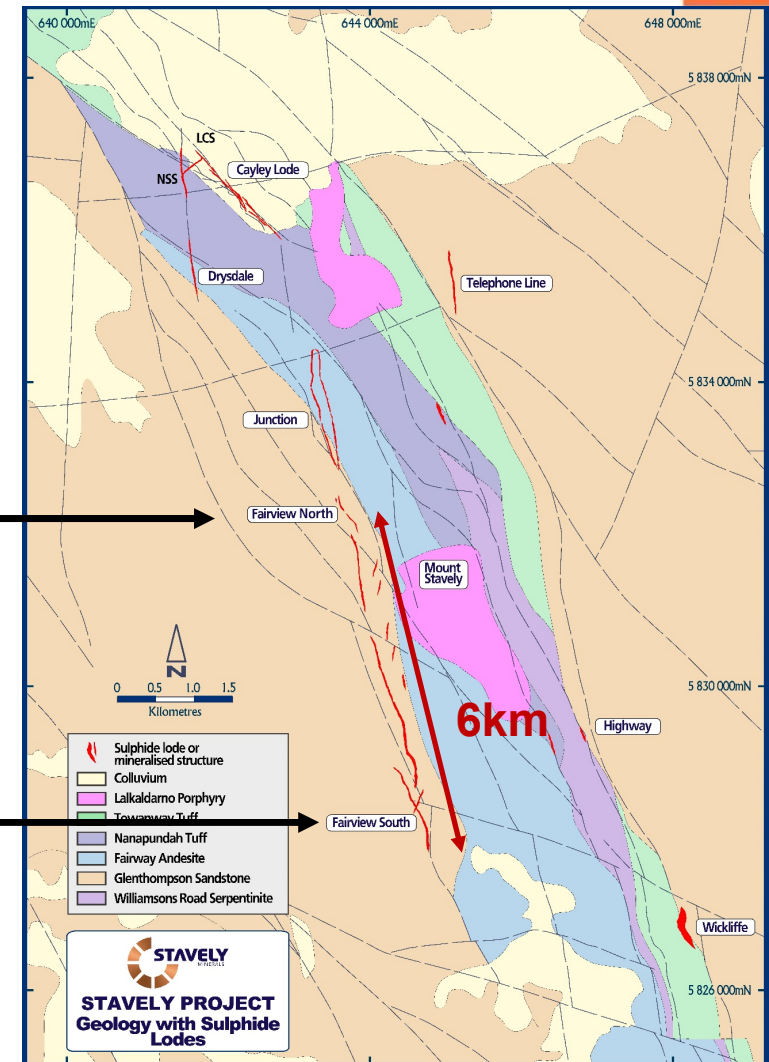


Gold Discovery Opportunities – Fairview North and South



Fairview North gold prospect
(favourable NW structural control)

Fairview South gold prospect
(gold associated with porphyry dykes)





Fairview North

STAVELY MINERALS - FINDING THE COPPER THE WORLD NEEDS FOR A LOW-CARBON FUTURE

Gold Discovery Opportunities – Fairview North¹



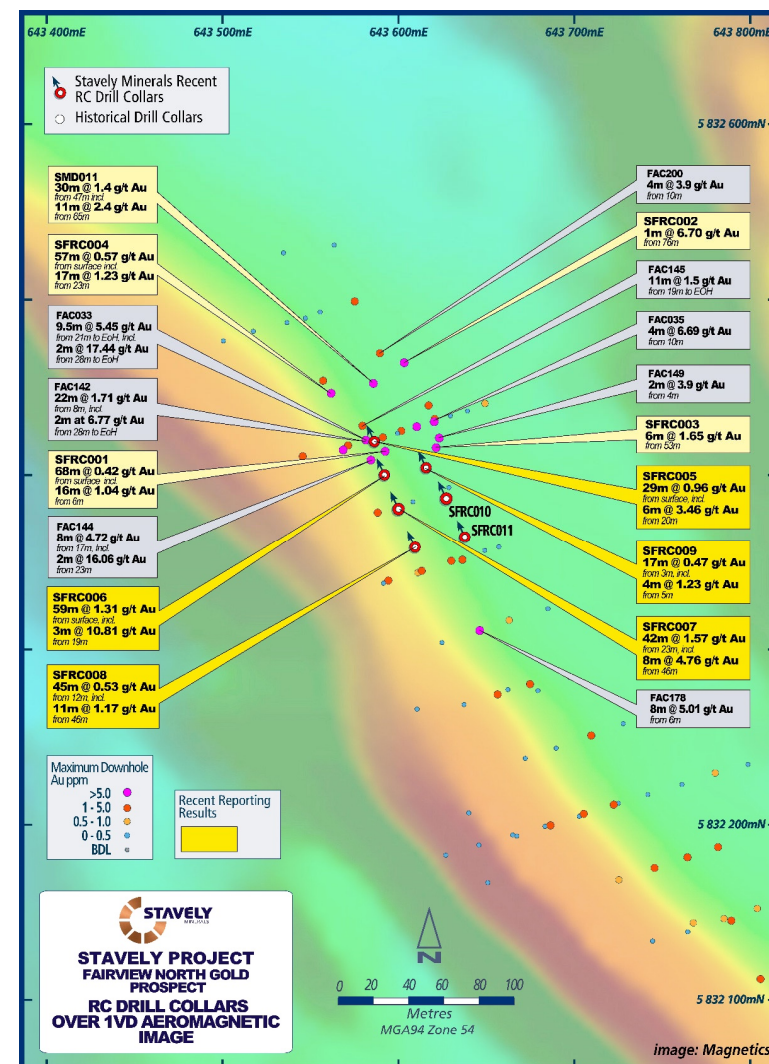
Previous explorer drill results:

- FAC142 – 22m at 1.71g/t Au from 8m to EoH
 - Incl. 3m at 5.1g/t Au to EoH
- FAC178 – 6m at 6.1g/t Au from 6m
- FAC145 - 11m at 1.5g/t Au from 19m to EoH
- FAC144 – 2m at 16.1g/t Au from 18m
- FAC035 – 6m at 4.6g/t Au from 8m

Stavely Minerals previous intercepts:

- SMD011 – 30m at 1.4g/t Au from 47m
 - Incl. 11m at 2.4g/t Au from 65m
- SFRC001 – 68m at 0.42g/t Au from surface
 - Incl. 16m @ 1.04g/t Au from 6m
- SFRC002 – 1m at 6.70g/t Au from 76m
- SFRC003 – 6m at 1.65g/t Au from 53m
- SFRC004 – 57m at 0.57g/t Au from surface
 - Incl. 17m at 1.23g/t Au from 23m

¹See ASX:SVY announcement 20 July 2017 and 22 May 2025



Gold Discovery Opportunities – Fairview North¹



Recent RC drill results:

- 27m at 2.33g/t gold from 13m down-hole, including:
 - 3m at 10.81g/t gold from 19m down-hole, and,
 - 4m at 5.05g/t gold from 30m down-hole

All within a broader zone of **59m at 1.31g/t gold** from surface, in drill hole SFRC006.

- 8m at 4.76g/t gold from 46m drill depth

Within a broader zone of **42m at 1.57g/t gold** from 23m drill depth in drill hole SFRC007.

- 6m at 3.46g/t gold from 20m drill depth

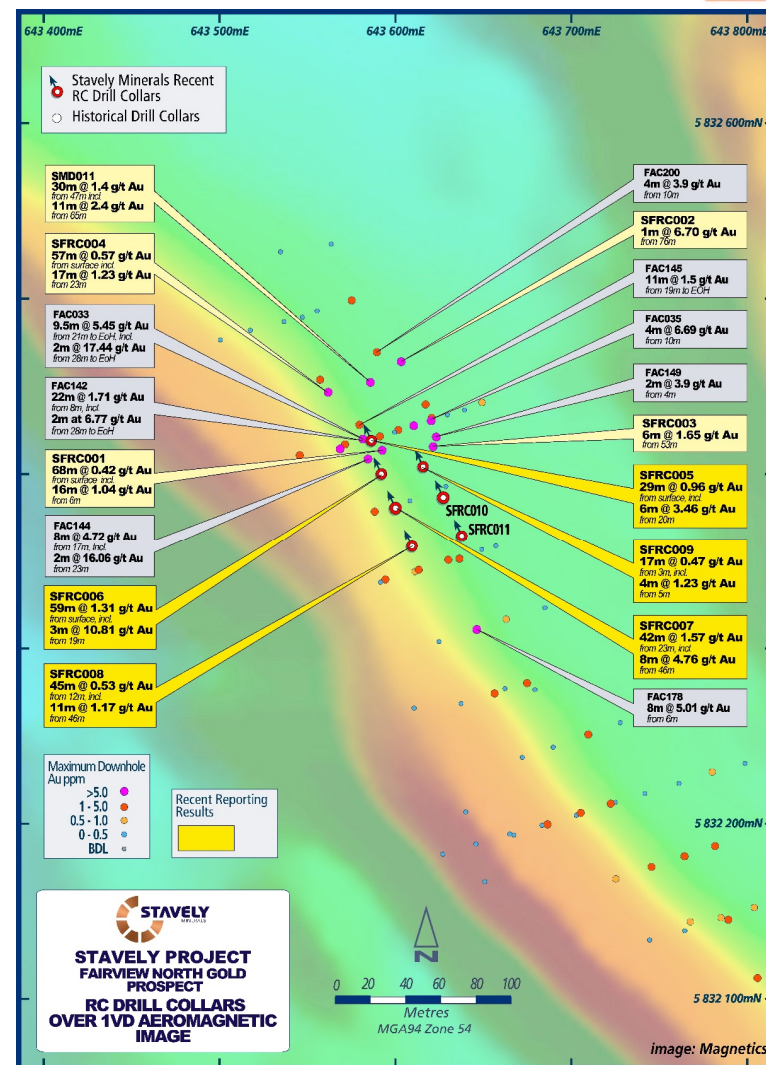
Within a broader zone of **29m at 0.96g/t gold** from surface in drill hole SFRC005.

- 11m at 1.17g/t gold from 46m drill depth

Within a broader zone of **45m at 0.53g/t gold** from 12m in drill hole SFRC008, and

- 4m at 1.23g/t gold from 5m drill depth

Within a broader zone of **17m at 0.47g/t gold** in drill hole SFRC009.



Gold Discovery Opportunities – Fairview North¹



Recent RC drill results:

- 27m at 2.33g/t gold from 13m down-hole, including:
 - 3m at 10.81g/t gold from 19m down-hole, and,
 - 4m at 5.05g/t gold from 30m down-hole

All within a broader zone of **59m at 1.31g/t gold** from surface, in drill hole SFRC006.

- 8m at 4.76g/t gold from 46m drill depth

Within a broader zone of **42m at 1.57g/t gold** from 23m drill depth in drill hole SFRC007.

- 6m at 3.46g/t gold from 20m drill depth

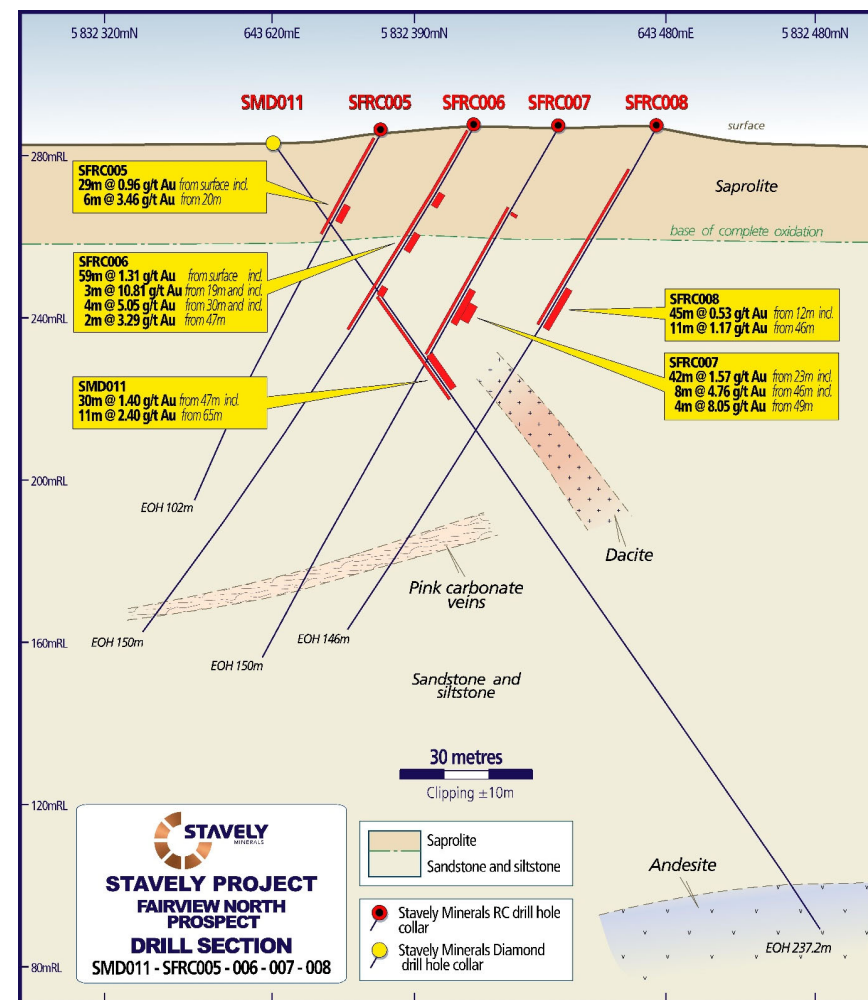
Within a broader zone of **29m at 0.96g/t gold** from surface in drill hole SFRC005.

- 11m at 1.17g/t gold from 46m drill depth

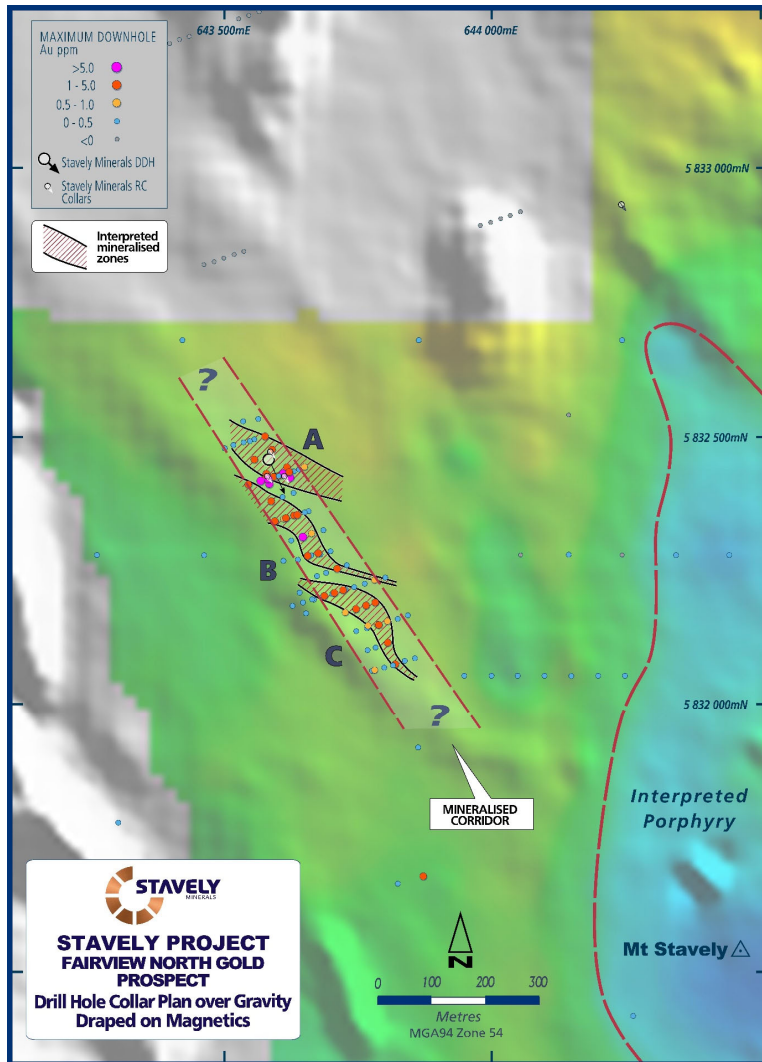
Within a broader zone of **45m at 0.53g/t gold** from 12m in drill hole SFRC008, and

- 4m at 1.23g/t gold from 5m drill depth

Within a broader zone of **17m at 0.47g/t gold** in drill hole SFRC009.



Gold Discovery Opportunities – Fairview North



Attractive gold target:

- Favourable NW 'kink' in the Fairview trend
- Same fertile orientation as the Cayley Lode
- Magnetics indicate it is located on the contact between sandstone and diorite intrusion – competency contrast

Only flexure 'A' tested:

- Flexure 'A' now ready for extensional drilling
- RC drill test flexures 'B' and 'C'
- Aircore drill NW and SE extensions to identify additional flexures

¹See ASX:SVY announcement 22 May 2025

Fairview North Leach Test Results



Bottle Roll Cyanide Leach Test

Sample ID	Test No.	% Au Extraction @ Hours								Calc'd Head Au (g/t)	Consumption (kg/t)	
		2	4	8	24	48	72	96	120		NaCN	Lime
SFGDM01	LT1	24.7	55.2	73.3	96.3	97.2	98.2	98.3	98.4	1.83	0.76	0.17
SFGDM02	LT2	7.0	16.8	26.7	54.7	65.0	68.4	73.2	72.6	0.55	1.74	1.77
SFGDM03	LT3	12.7	33.2	47.5	75.1	82.2	88.1	92.4	92.4	1.77	1.21	0.50

Column Leach Test

Sample ID	Test No.	% Au Extraction @ Days									Calc'd Head Au (g/t)	Consumption (kg/t)	
		1	2	5	10	15	20	30	37	Final		NaCN	Cement
SFGDM01	LT1	24.3	57.0	84.1	91.3	93.3	94.3	95.5	-	95.8	1.90	0.30	10.0
SFGDM02	LT2	7.4	26.6	52.9	66.2	72.1	76.0	80.8	-	81.9	0.69	0.42	20.0
SFGDM03	LT3	11.5	34.3	60.5	72.6	77.6	80.8	84.7	86.6	87.4	1.75	0.67	10.0

Comparison of bottle roll leach only vs. gravity plus leach

Sample	Test No	Size	Description	Au Gravity Recovery, %	Au Leach Recovery, %	Au Overall Recovery, %
SFGDM01	LT1	As Received	Leach Only	-	98.4	98.4
SFGDM02	LT2	As Received	Leach Only	-	72.6	72.6
SFGDM02	LT4	-1.7 mm	Gravity+ Leach	9.69	75.3	85.0
SFGDM03	LT3	As Received	Leach Only	-	92.4	92.4
SFGDM03	LT5	-1.7 mm	Gravity+ Leach	21.5	73.8	95.3

Very good leach results¹ – amenable to low-cost heap leach gold extraction:

- Up to +96% gold recovery after 24 hours in bottle roll testing
- Up to +90% gold recovery after 10 days in column leach tests
- Gravity plus leach test recoveries up to 95.3%
- Testwork concludes **+80% gold recoveries could be expected** in low-cost heap leach extraction

¹ See ASX:SVY announcement dated 17 July 2025 and ALS Metallurgy Test Report under the Technical Data tab on www.stavely.com.au



Fairview South

STAVELY MINERALS - FINDING THE COPPER THE WORLD NEEDS FOR A LOW-CARBON FUTURE

Gold Discovery Opportunities – Fairview South



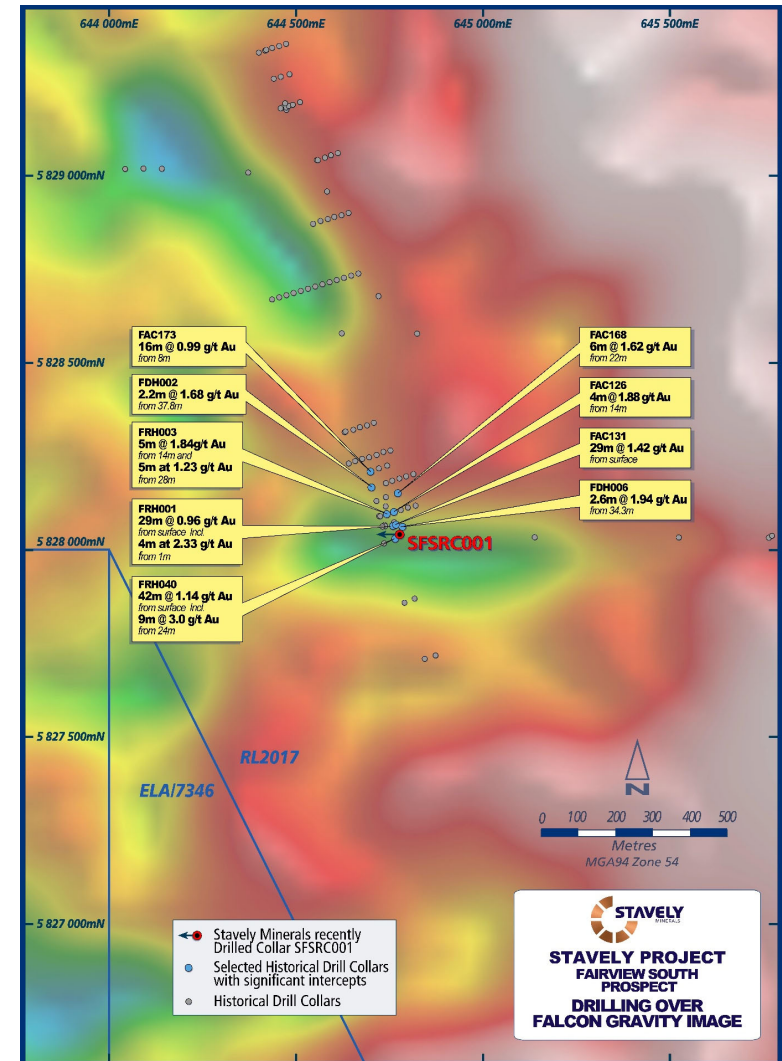
Previous explorer drill results¹:

- FRH040 – 42m at 1.14g/t Au from surface, including 9m at 3.00g/t Au from 24m
- FAC131 – 29m at 1.42g/t Au from 6m
- FRH003 - 5m at 1.84g/t Au from 14m, and 5m at 1.23g/t Au from 28m
- FAC168 – 6m at 1.62g/t Au from 22m
- FAC126 – 4m at 1.88g/t Au from 14m
- FDH006 – 2.6m at 1.94g/t Au from 34.3m
- FRH001 – 29m at 0.96g/t Au from surface, including 4m at 2.33g/t Au from 1m
- FAC173 – 16m at 0.99g/t Au from 8m

Drilled by Beaconsfield Gold up to 1 month before the Beaconsfield Mine disaster, no further work after.

Located on a major WNW structure and proximal to a gravity low – interpreted to be a rhyolite intrusion.

¹See Stavely Minerals Prospectus April 2014



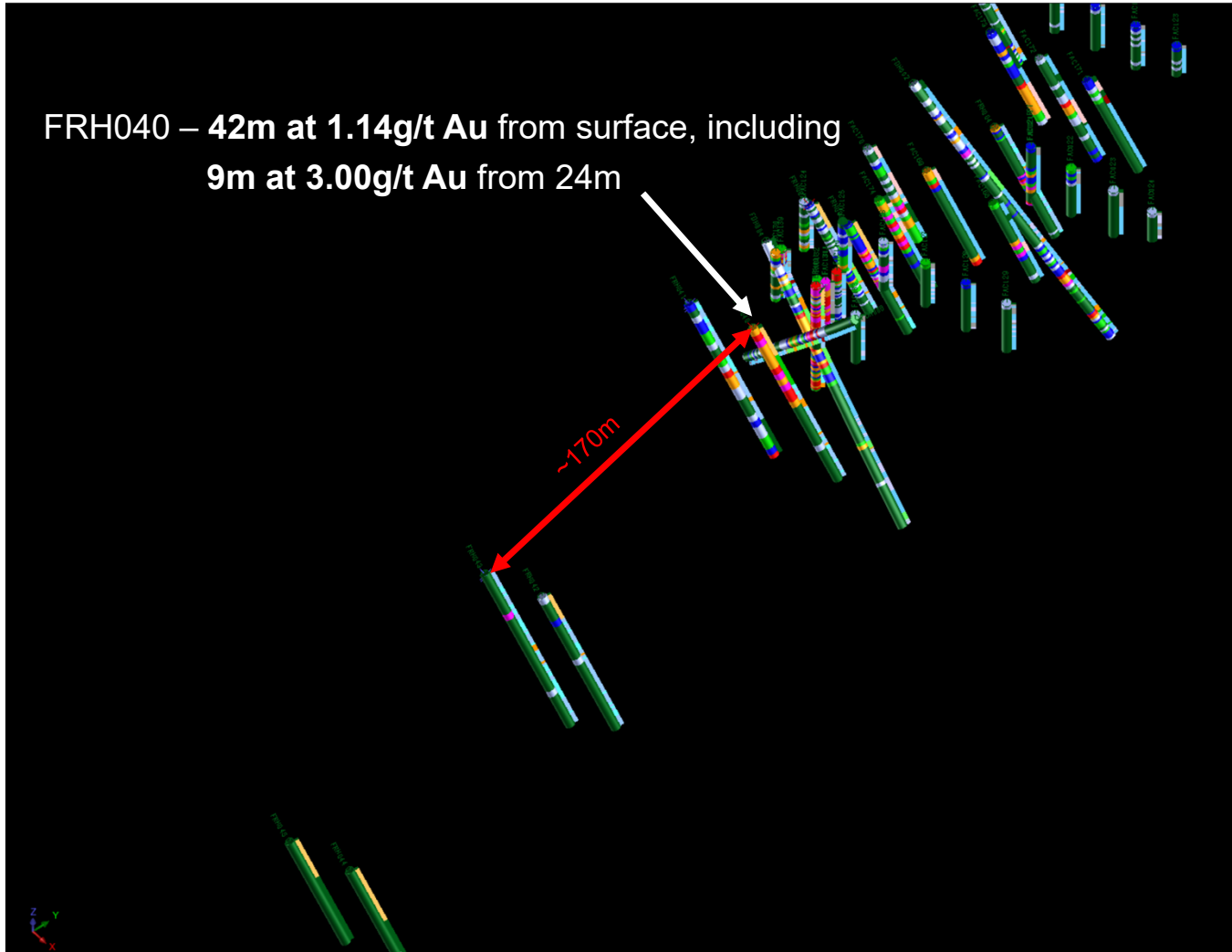
Gold Discovery Opportunities – Fairview South



FRH040 – 42m at 1.14g/t Au from surface, including
9m at 3.00g/t Au from 24m

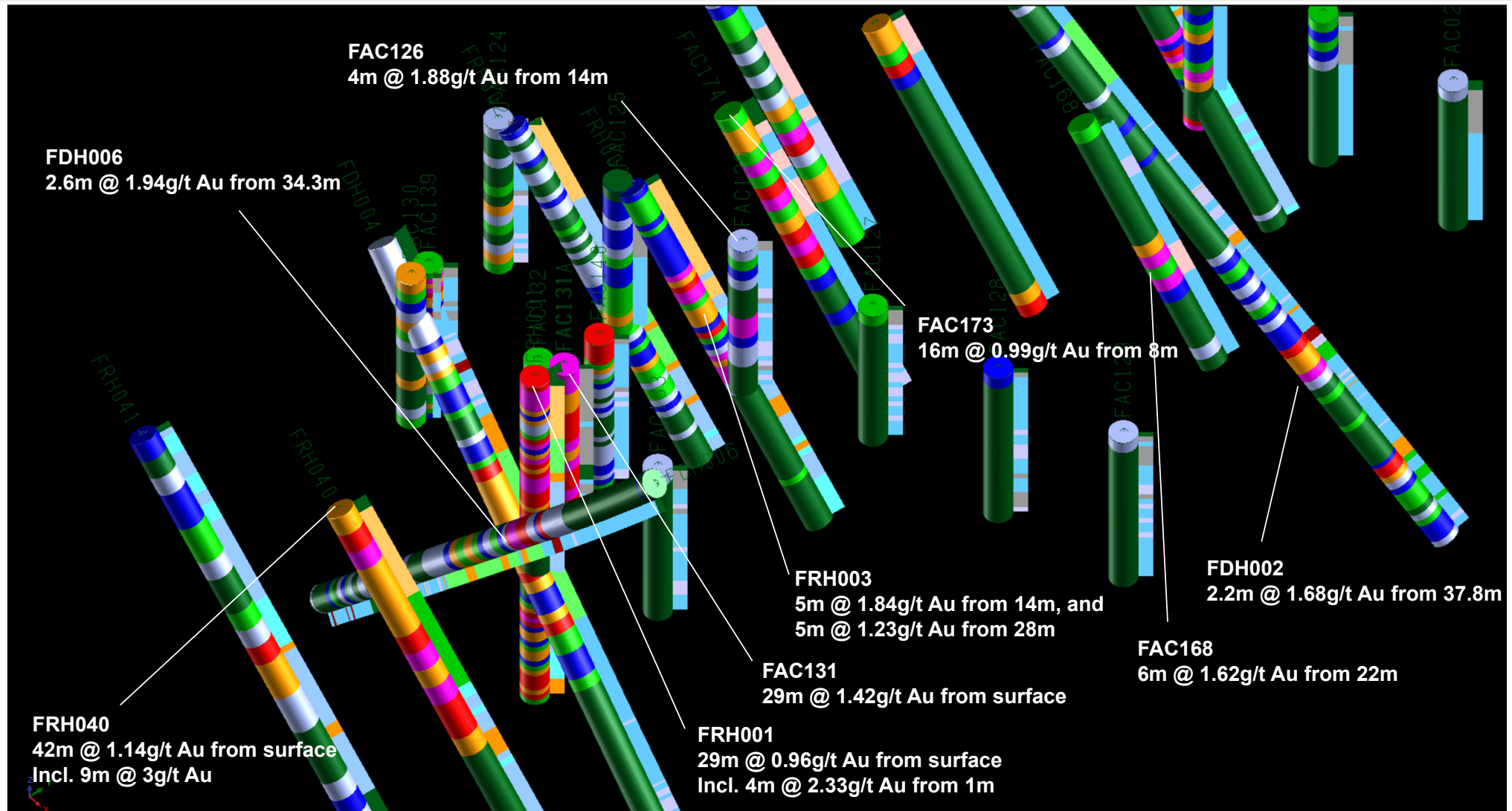
~170m

Surpac oblique 3D view

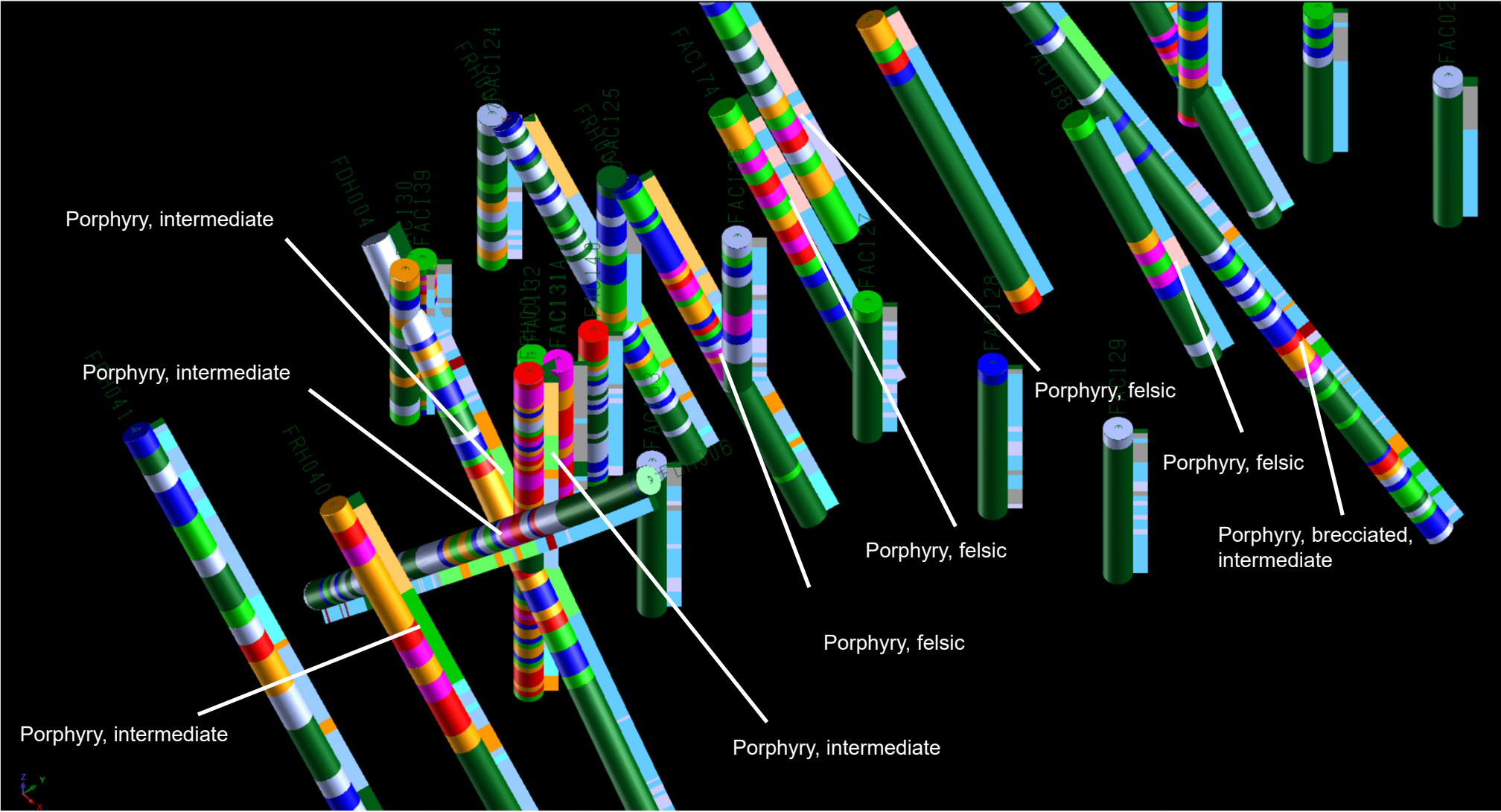




Fairview South Gold Prospect – gold with porphyry, Cu not assayed



Fairview South Gold Prospect – gold with porphyry, Cu not assayed



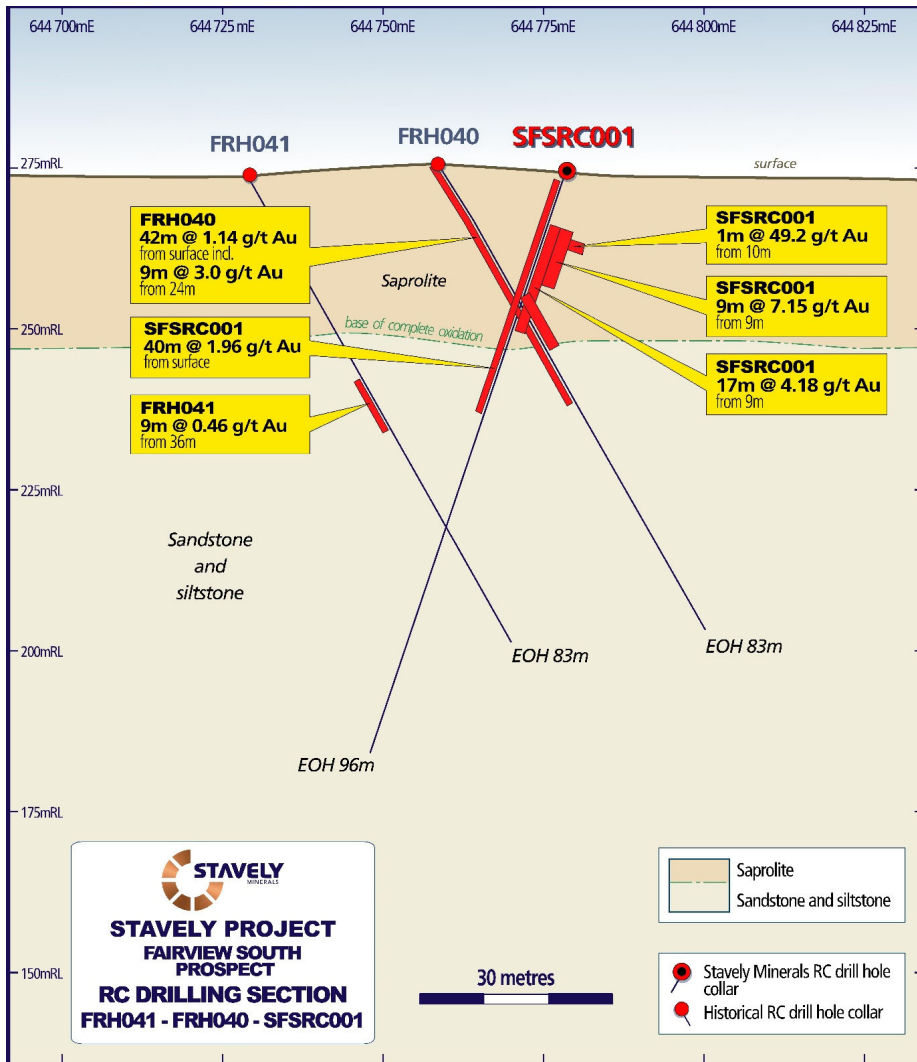
Fairview South Recent RC drill Results



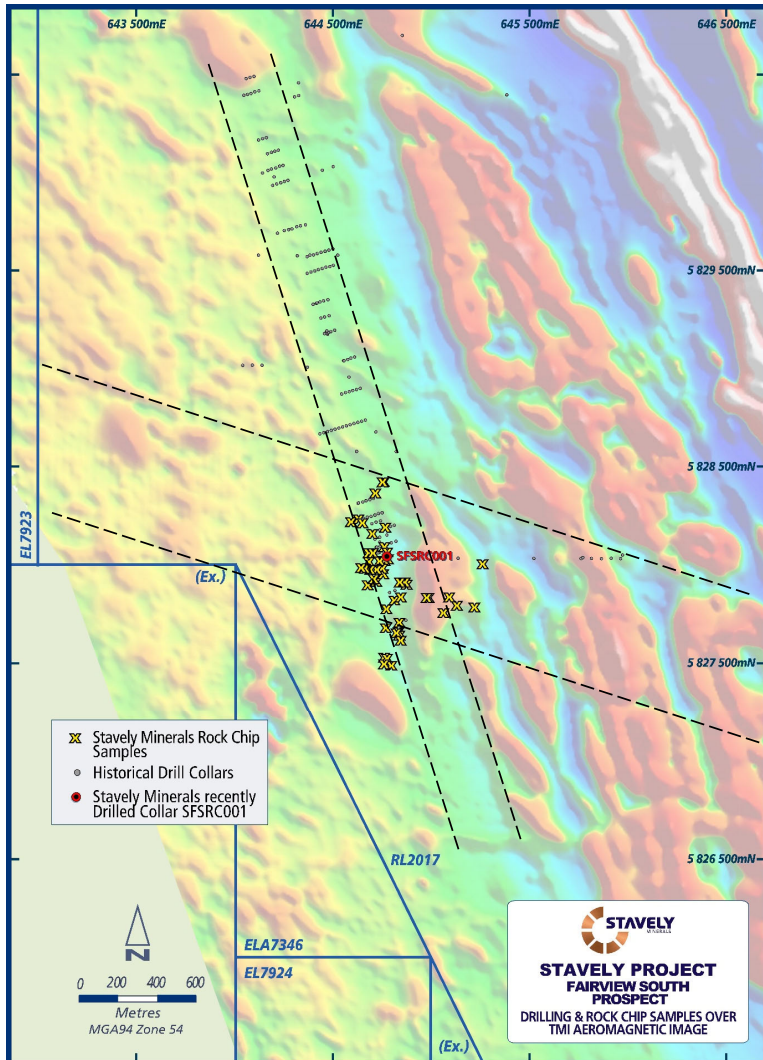
Fairview South Gold Prospect

- 40m at 1.96g/t gold from surface including:
 - 17m at 4.18g/t gold from 9m down-hole, including¹:
 - 9m @ 7.15g/t gold from 9m down-hole, including:
 - 1m at 49.2g/t gold from 10m down-hole.

¹See ASX:SVY announcement 14 July 2025



Fairview South Magnetics 1VD, Structure and ?Intrusion



Fairview South Gold Prospect

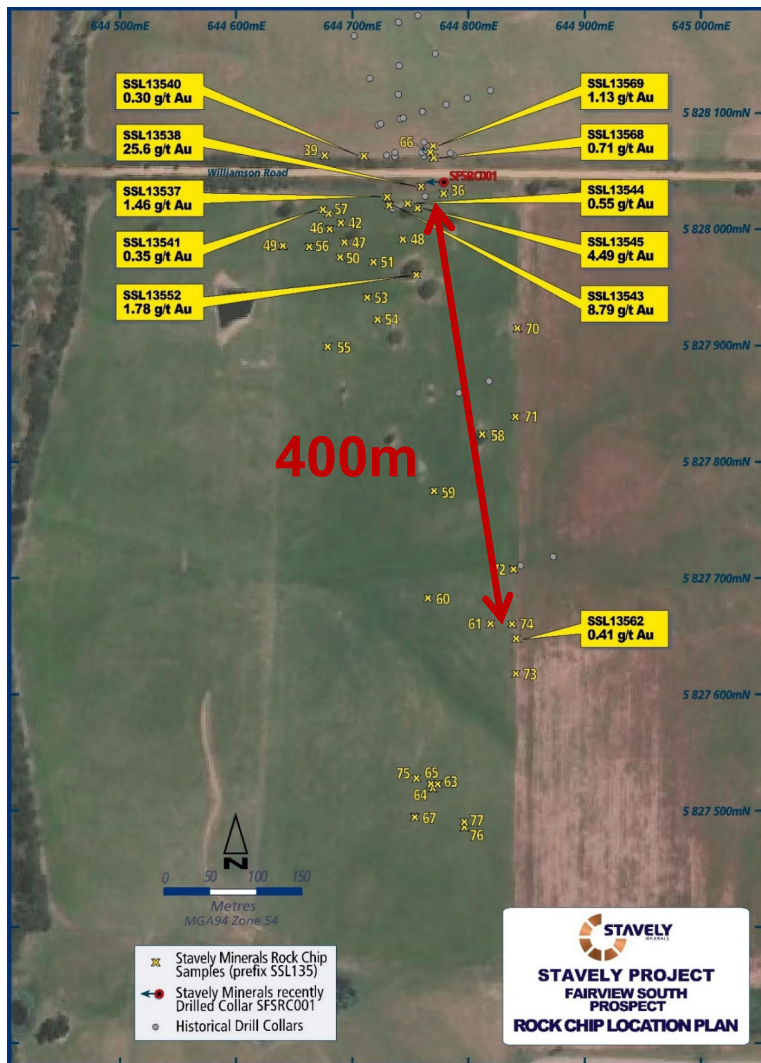
- At the intersection of ~NS and WNW structures
- Associated with logged intermediate and felsic intrusive dykes
- A single RC drill hole (SFSRC001) recently drilled to confirm gold mineralisation location – assays pending
- Abundant gossanous float material sampled in the paddock – assays pending

Fairview South Recent Rock Chip Results



Fairview South Gold Prospect Reconnaissance Rock Chips

- **25.60g/t gold** - gossan w/ boxworks hosted in siltstone
- **8.79g/t gold** - brecciated quartz vein and gossan w/ boxworks in altered felsic volcanic – ?rhyolite
- **4.49g/t gold** - brecciated quartz vein and gossan w/ boxworks in altered siltstone
- **1.78g/t gold** - a collection of quartz vein and gossan fragments
- **1.46g/t gold** - gossan w/ boxworks in altered siltstone
- **1.13g/t gold** - quartz veined ferruginous felsic volcanic ?rhyolite
- A further eight float rock-chip samples returned anomalous assays +0.1g/t gold
- Gold mineralisation extends +400m south of SFSRC001

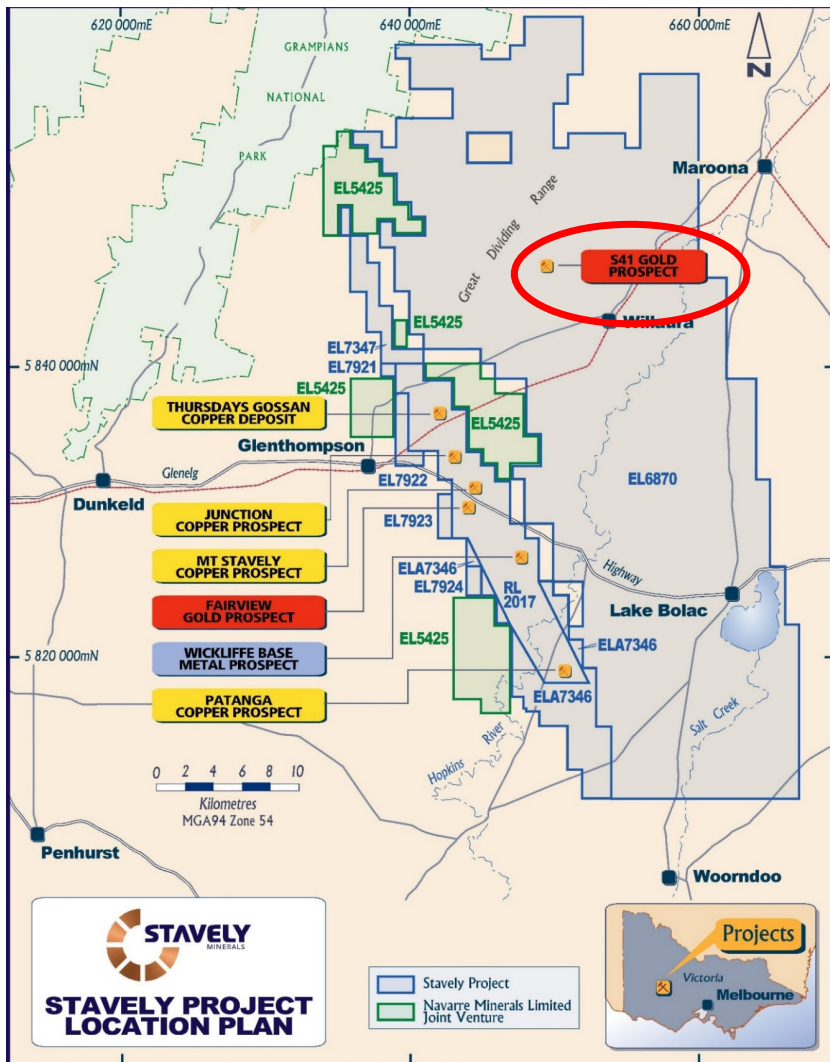




S41 Breccia-Hosted Gold Target

(full technical presentation from AIG Victorian Round-Up available on www.stavely.com.au)

Emerging Discovery? – The S41 Breccia Prospect



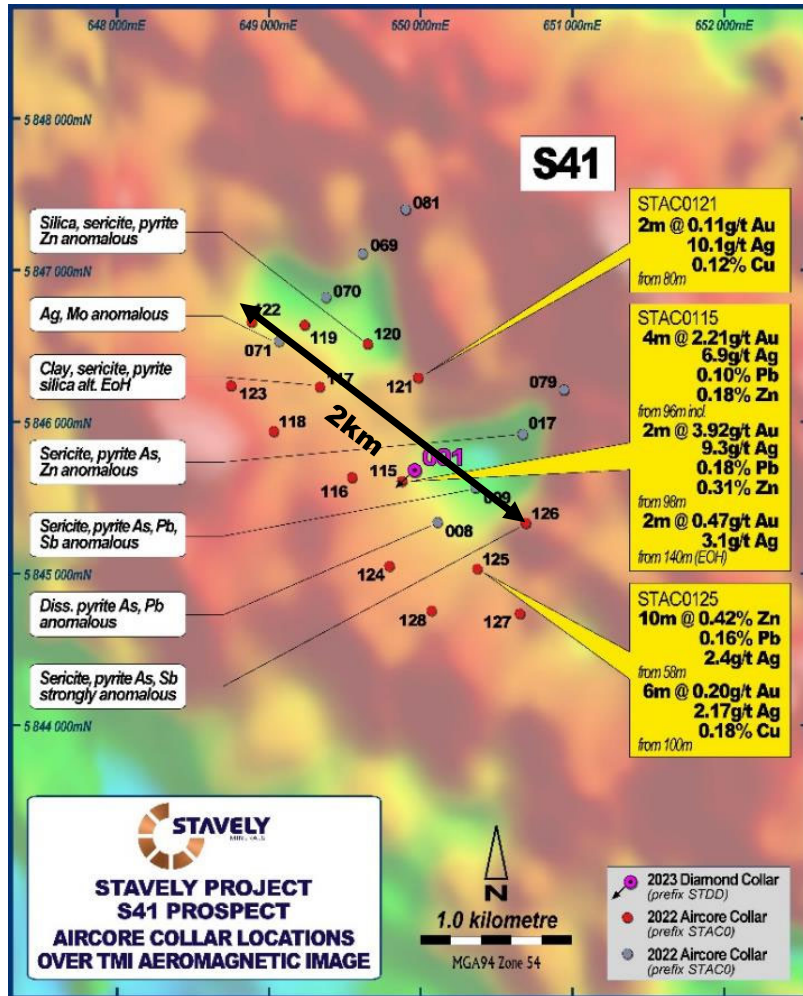
S41 Breccia-Hosted Gold Prospect

- Identified in Stavely Minerals' Falcon Gravity Gradiometer[®] survey under 50m of basalt
- We are the first to see this gold mineralized system:
 - Identified the geophysical anomaly
 - Drilled through the basalt to discover the gold-base metal anomaly
 - Diamond drilled it and identified the style of system it is: carbonate – base metal – gold
 - Well studied style of gold deposit
- Scale potential for discovery

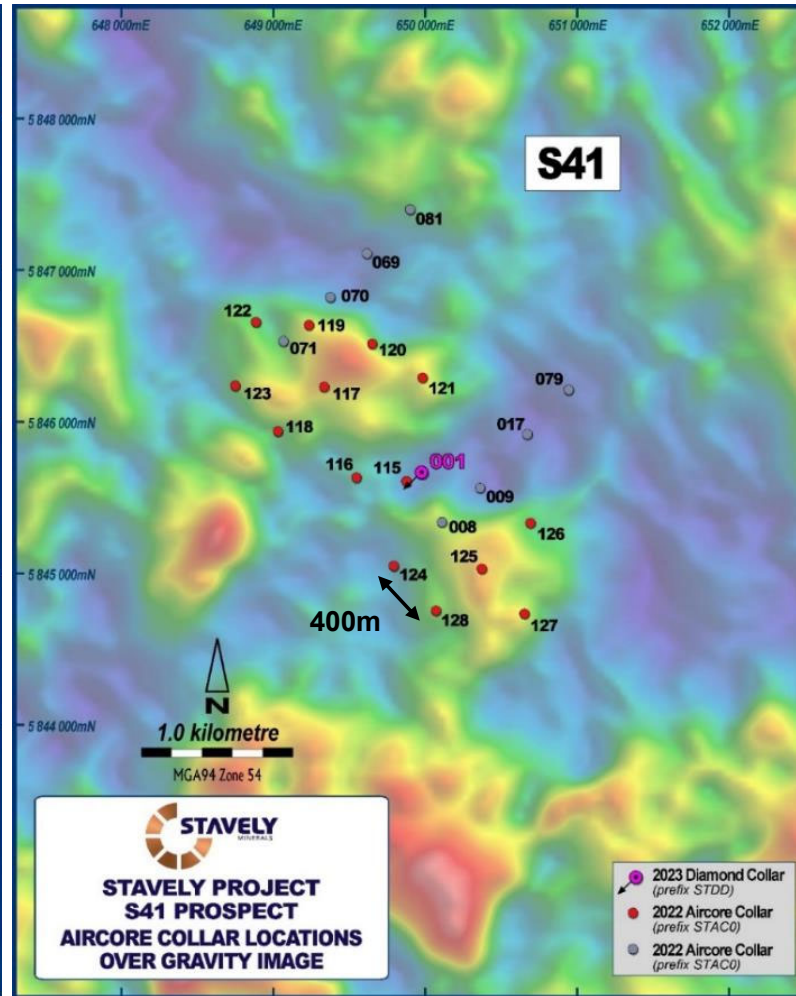
Emerging Discovery? – The S41 Breccia-Hosted Gold Prospect



Magnetics



Gravity



S41 Prospect Aircore¹

- **4m at 2.21g/t Au** from 96m drill depth, including:
- **2m at 3.92g/t Au** from 98m in aircore drilling
- Large 2km alteration zone
- Strongly anomalous base metals and pathfinder geochemistry

¹See ASX announcement 19/04/2023



- Only one diamond drill hole in the 2,000m x 750m interpreted breccia system

- ¹See ASX announcement 26/04/2023

Breccia-hosted Carbonate – Base Metal – Gold Systems



Low sulphidation mineralisation style

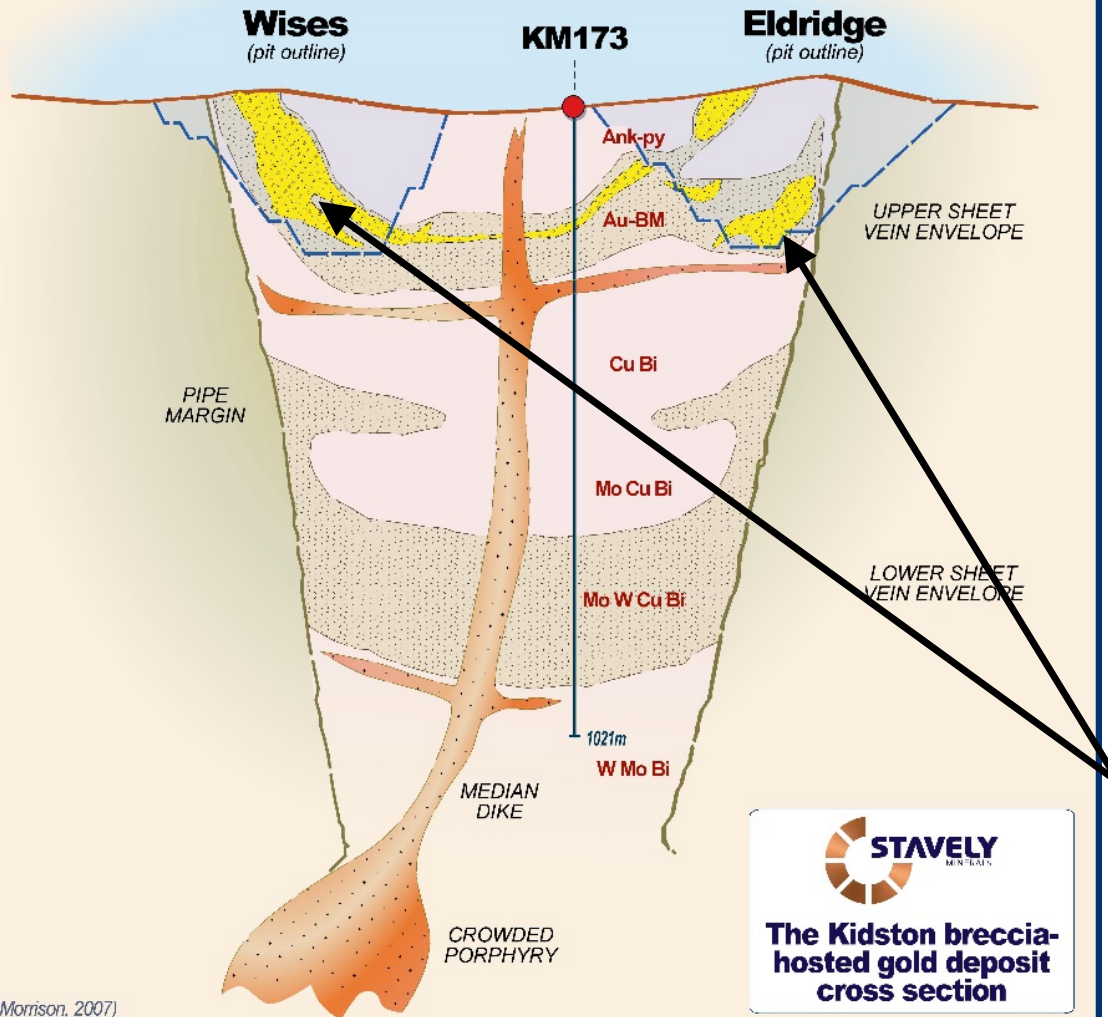
Depth	quartz-sulphide Au ± Cu	carbonate-base metal Au			epithermal quartz Au
Shallow	opal, chalcedony marcasite ✓	<u>Sphalerite</u> Fe-poor	<u>Ag sulphosalts</u> acanthite	<u>Carbonate</u> siderite FeCO ₃	
	pyrite quartz	<div> <div>white ✓</div> <div>yellow</div> <div>red</div> </div> <div> <div>rhodochrosite MnCO₃ ✓</div> <div> <div>argenteite</div> <div> <div>+ galena</div> <div>→</div> </div> </div> <div> <div>kutnahorite Ca (MgMgFe)(CO₃)₂</div> <div>ankerite CaCO₃(MgFe)CO₃ ✓</div> </div> </div>			quartz high fineness free Au <u>Te minerals</u> hessites tellurobismuthenite
Deep	chalcopryrite, pyrrhotite specularite	brown	tennantite tetrahedrite	dolomite CaCO ₃ .MgCO ₃	
		black		Mg calcite	
		Fe-rich		calcite CaCO ₃	

CORBETT ai1851

**‘goldilocks’ gold
precipitation zone**

With kind permission from Greg Corbett

Emerging Discovery? – The S41 Breccia-Hosted Gold Prospect



S41 Diamond Drill Hole¹

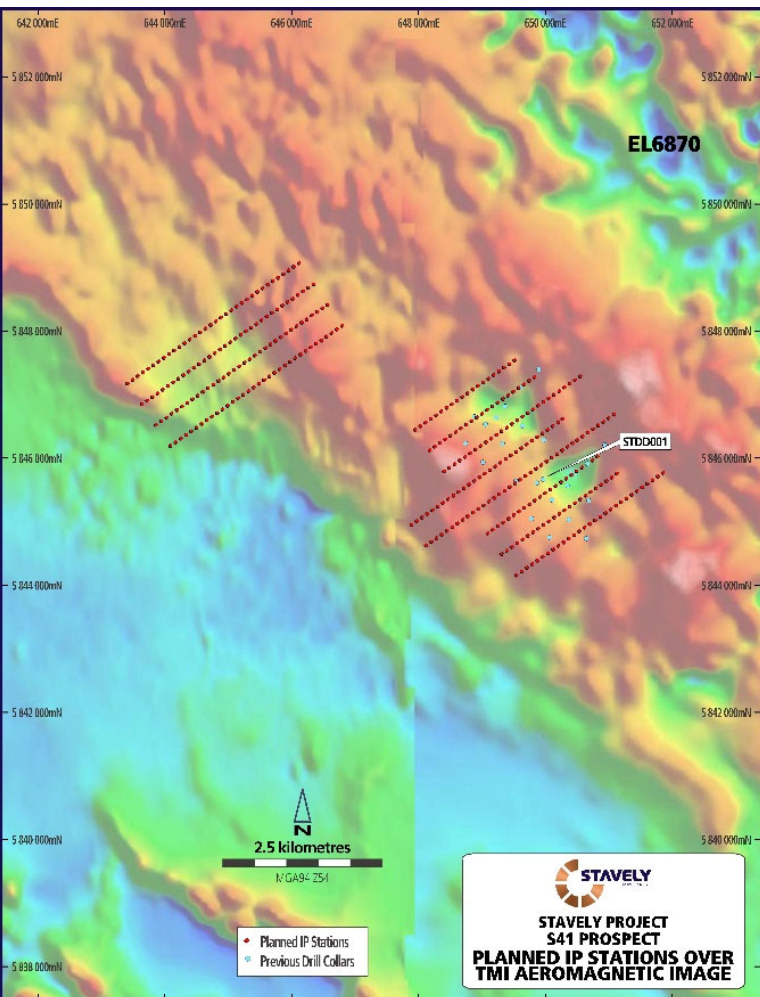
- Only one diamond drill hole in the 2,000m x 750m interpreted breccia system
- **1m at 2.16g/t Au** from 282m drill depth
- **37m at 0.10g/t Au**, including:
 - **2m at 0.56g/t Au** from 320m, and
 - **5m at 24.3g/t Ag** from 353m
- Importantly demonstrated that there is gold and silver in the system associated with Mn-carbonate and Zn & Pb base metals
- Breccia-hosted systems host notoriously inconsistent gold mineralization eg. Kidston
- Potential for scale

¹See ASX announcement 26/04/2023

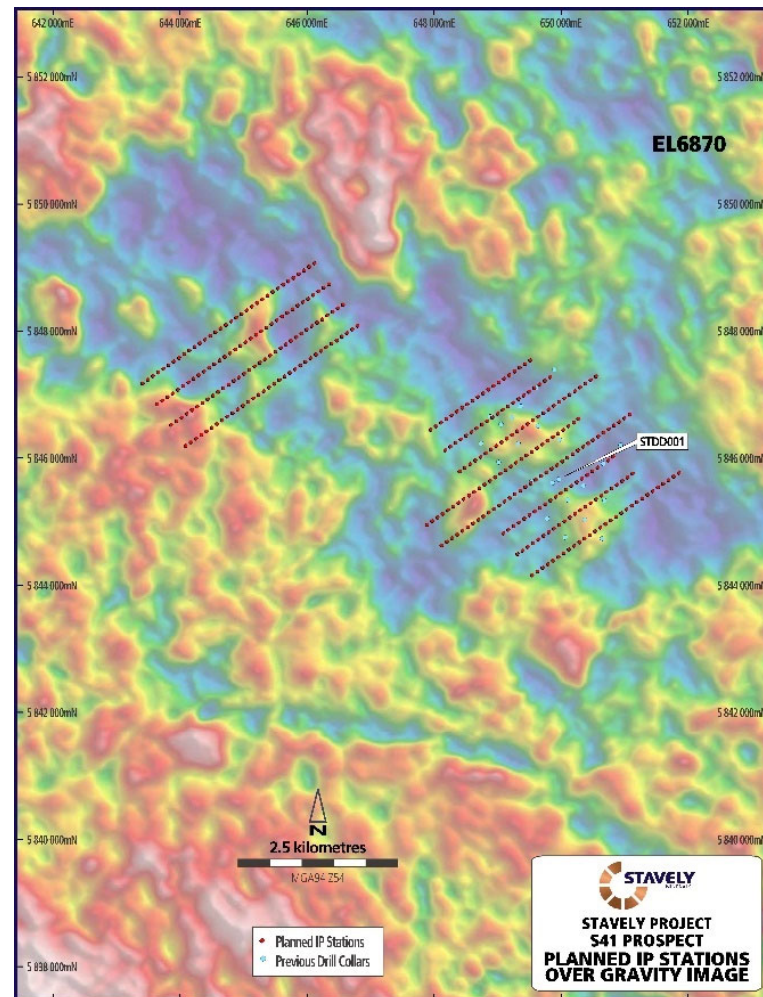
The S41 Breccia-Hosted Gold Prospect – Map out sulphides with IP



Magnetics



Gravity

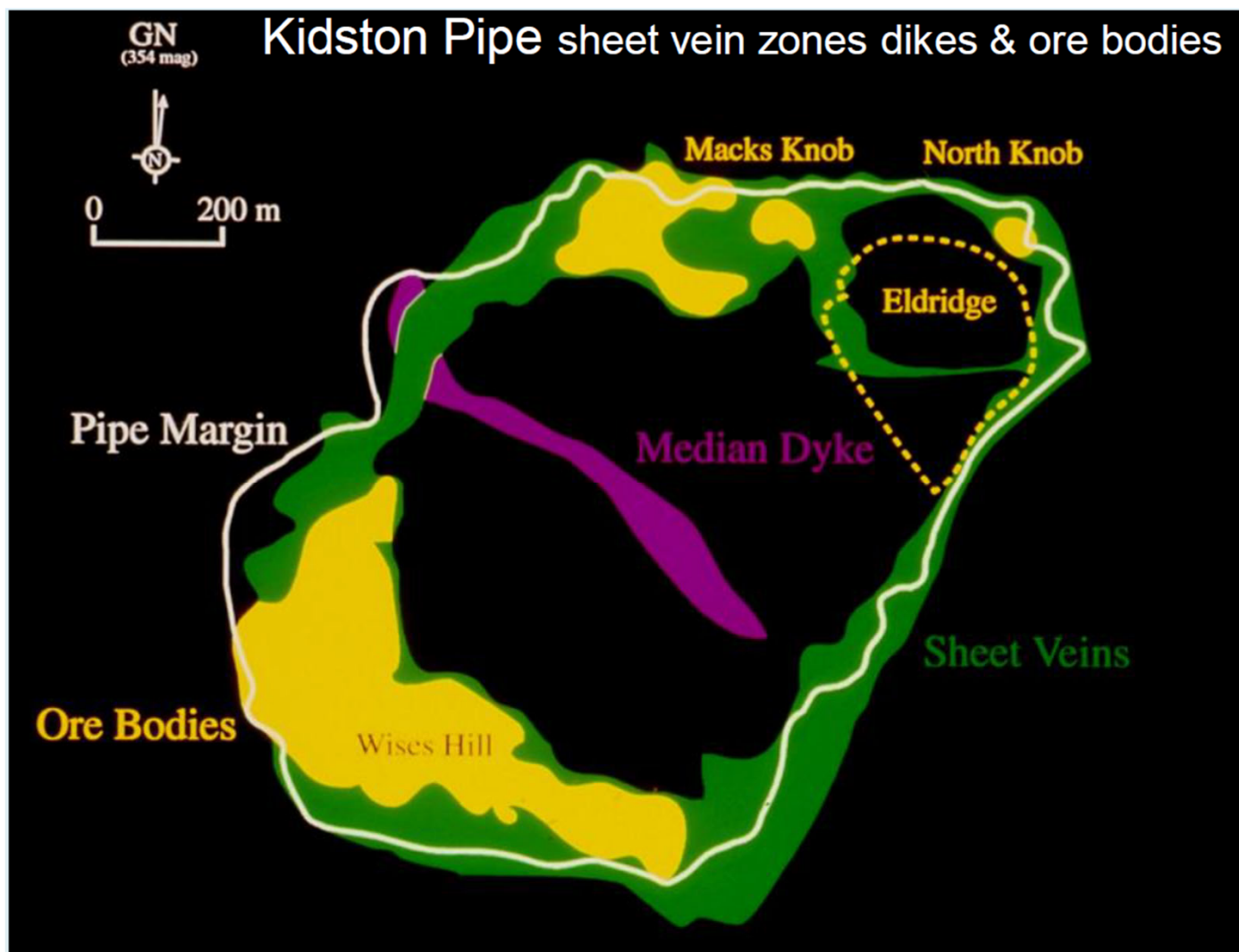


S41 Prospect Geophysics¹

- Proposed Induced Polarisation (IP) geophysical program
- Should 'see' through the basalt and identify zones of better developed sulphide mineralisation
- Follow-up aircore drilling and then, based on results, likely diamond drilling – including extending STDD001

¹See ASX announcement 21/01/2025

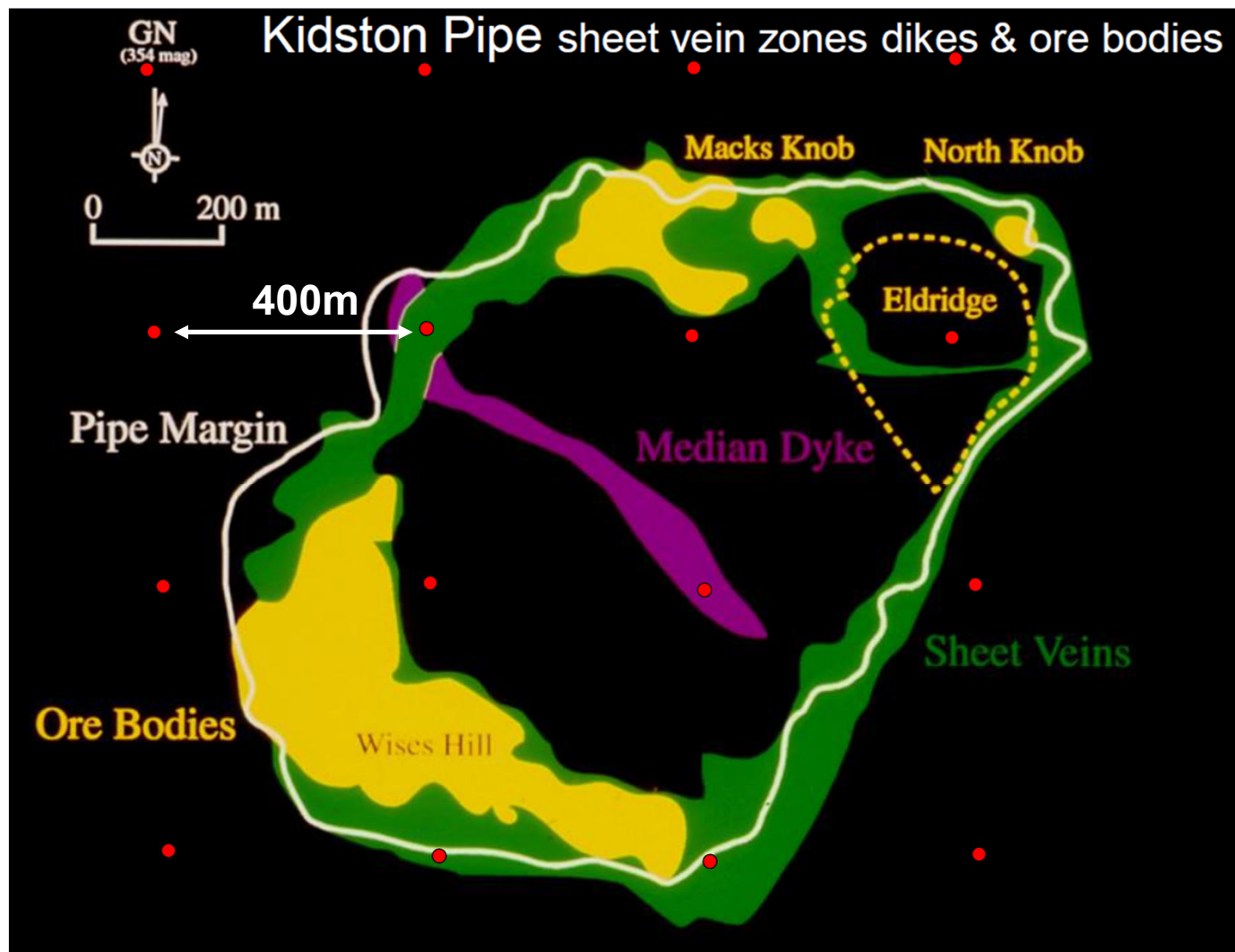
Kidston Breccia Pipe Outline and Sheeted Vein Mineralisation



Kidston

- Gold mineralisation hosted in peripheral sheeted veins

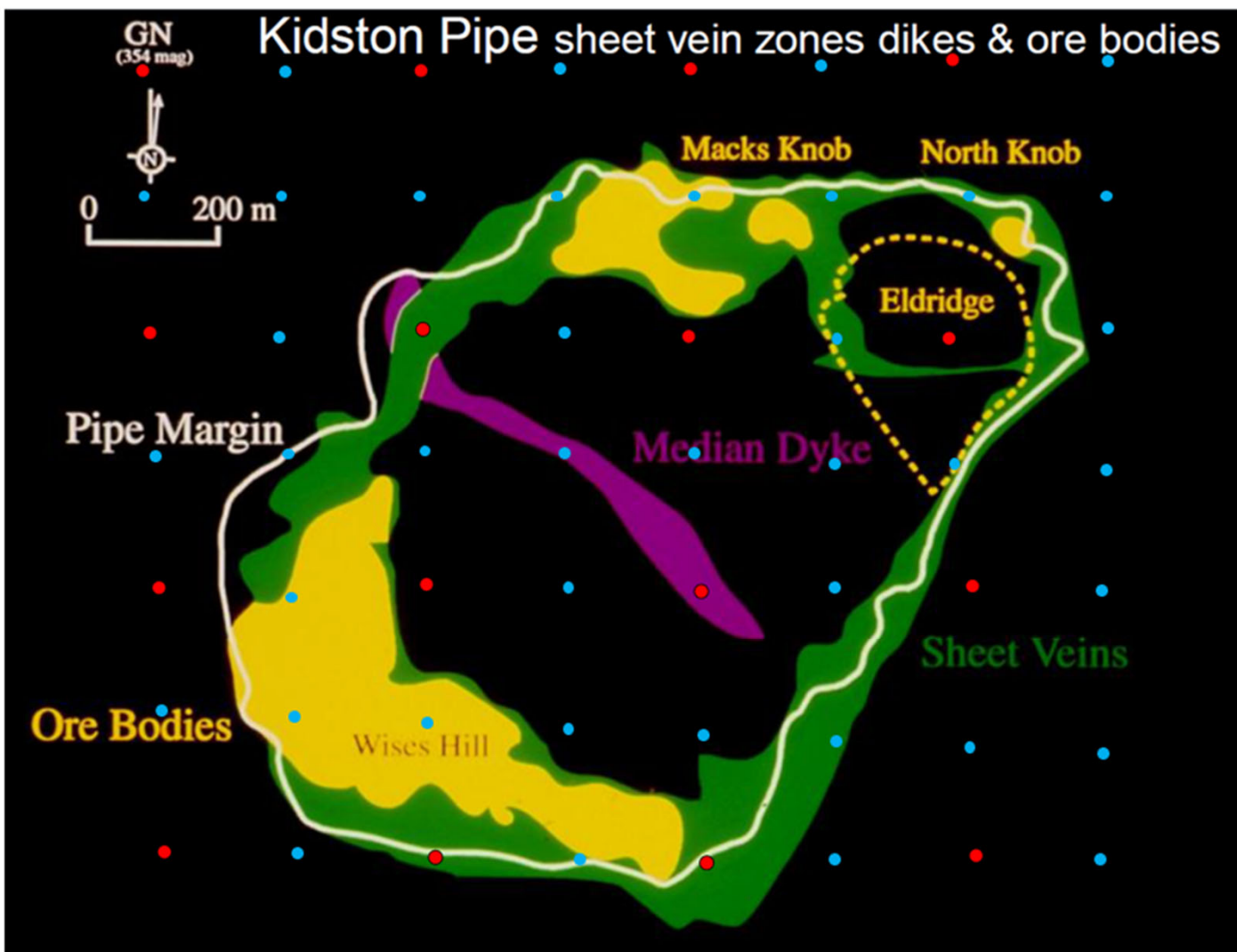
Kidston with 400m-spaced drill holes



Kidston

- Gold mineralisation hosted in peripheral sheeted veins
- Conceptual 400m-spaced aircore drill spacing similar to the existing spacing at S41

Kidston with 200m-spaced drill holes



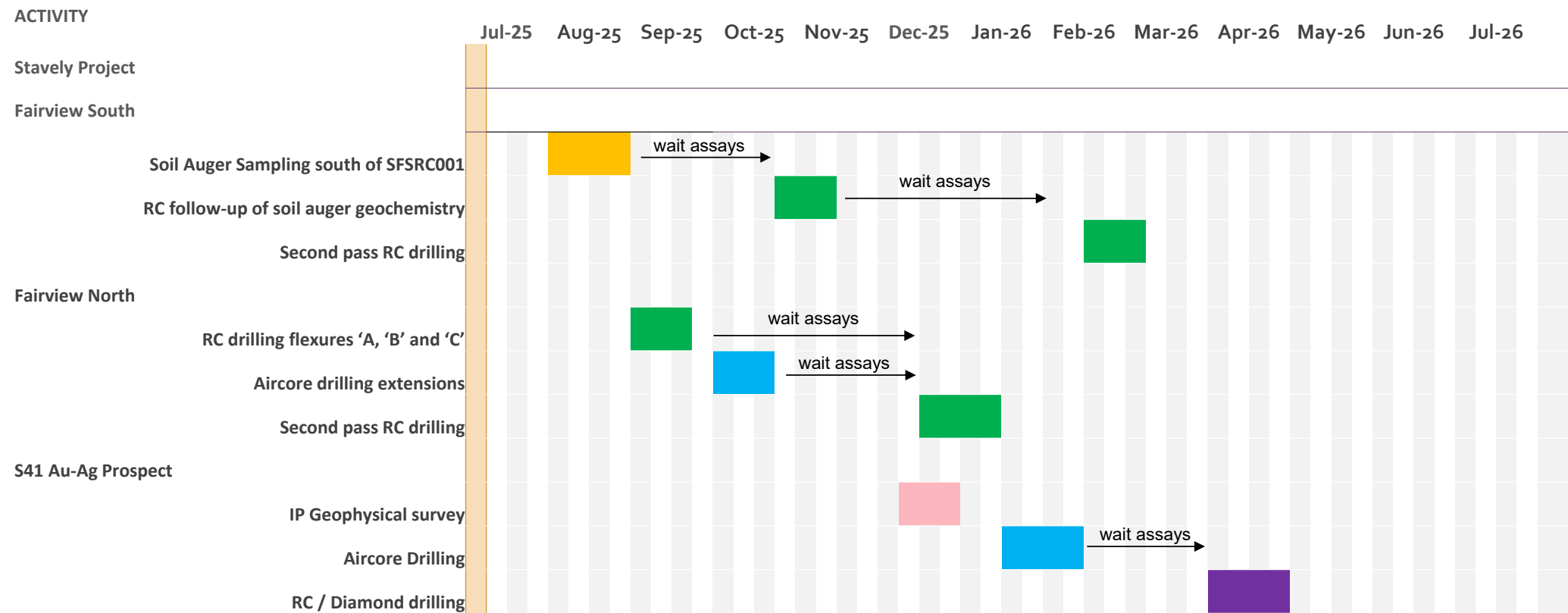
Kidston

- Proposed 200m-spaced aircore drill infill

Red = 400m spaced aircore

Blue = 200m spaced aircore

9-month Work Programme – Drilling Intensive



Corporate Summary



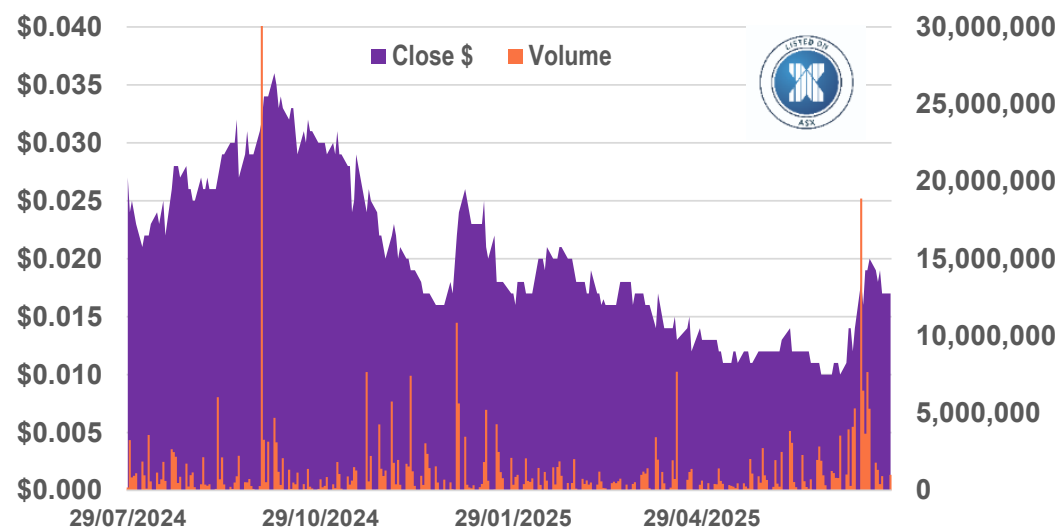
CAPITAL STRUCTURE

ASX Ticker	SVY
Share Price (28/07/25)	\$0.017
Shares on Issue	544M
Cash (30/06/25)	\$1.2M
Market Capitalisation	\$9.25M
Management and Staff	~10% equity

Directors

Chris Cairns	Executive Chair
Jennifer Murphy	Technical Director
Peter Ironside	Non-Executive Director
Amanda Sparks	Non-Executive Director & Company Secretary
Rob Dennis	Non-Executive Director

12-month Share Price to 28 July 2025



Summary – Key Investment Takeaways



- ✓ The Cayley Lode is a quality, high-grade copper-gold-silver Mineral Resource from surface
- ✓ Renewed focus on gold targets, we control ~130km strike of fertile volcanic belt:
 - ✓ *Fairview North and South gold prospects; two priority targets to be drill defined*
 - ✓ *S41 breccia-hosted gold opportunity – scale potential with only 1 diamond drill hole to date*
- ✓ Junction copper-silver (aircore drilling impressive assays) – **gaining access a priority**
- ✓ Junction porphyry target – only 200m east of Junction high-grade copper-silver, again access a priority
- ✓ BIG targets





Investor Webinar Stavely Minerals – Gold Discovery Opportunities in the Stavely Volcanic Belt

<https://www.stavely.com.au/investors/media/>



Contact Us:
Stavely Minerals Limited
Level 1, 168 Stirling Highway
Nedlands WA 6009
www.stavely.com.au
info@stavely.com.au
Ph: 08 9287 7630

The information in this presentation is extracted from information available to view on www.stavely.com.au. The Company confirms that it is not aware of any new information or data that materially affects the information included in the original market announcement and, in the case of estimates of Mineral Resources or Ore Reserves, that all material assumptions and technical parameters underpinning the estimates in the relevant market announcement continue to apply and have not materially changed. The Company confirms that the form and context in which the Competent Person's findings are presented have not been materially modified from the original market announcement.



Appendix 1: Mineral Resources

Appendix 1: Mineral Resources Classifications



Table 1. Cayley Lode Initial Mineral Resource estimate

Resource Material	Resource Category	Cut-off	Tonnes (Mt)	Grade	Cont.	Grade	Cont.	Grade	Cont.
		(Cu %)		(Cu %)	Cu (Mlbs)	(Au g/t)	Au (oz)	(Ag g/t)	Ag (oz)
Primary Mineralisation (OP)	Indicated	0.2	5.87	1.04	134.4	0.23	43,407	7	1,321,074
	Inferred	0.2	1.7	1.3	49	0.2	10,931	9	491,907
Sub-Total Primary OP			7.6	1.1	183	0.2	54,338	7.4	1,808,158
Primary Mineralisation (UG)	Indicated	1.0	-	-	-	-	-	-	-
	Inferred	1.0	1.7	1.8	69	0.2	10,931	6	327,938
Sub-Total Primary UG			1.7	1.8	69	0.2	10,931	6	327,938
Total Cayley Lode			9.3	1.23	252	0.23	65,000	7.1	2,100,000



Table 4. Stavely Minerals Total Mineral Resources estimates

Resource Material	Resource Category	Cut-off	Tonnes (Mt)	Grade	Cont.	Grade	Cont.	Grade	Contained Metal	Grade	Cont.
		(Cu %)		(Cu %)	(Mlbs Cu)	(Au g/t)	(oz Au)	(Ag g/t)	(oz Ag)	(Zn %)	(kt Zn)
Total Resources	Indicated	1	21.5	0.61	288	0.1	67,301	3.1	2,153,972	0.3	8
	Inferred	1	6.8	1.2	175	0.1	32,797	4.7	1,043,839	0.2	16
Total Stavely Minerals			28.3	0.75*	463	0.11*	100,000	3.5	3,200,000	0.2	24

¹ Reported in compliance with the JORC Code 2012, see ASX announcement 14 June 2022



Cayley Lode bornite mineralisation - photo from ASX announcement 11 September 2019