

**ADDRESS**

Suite 1, 295  
Rokeby Road  
Subiaco WA 6008

ABN 54 126 490 855

**PHONE**

+61(08) 6555 2950

**EMAIL**

[info@coppermoly.com.au](mailto:info@coppermoly.com.au)

**WEBSITE**

[www.coppermoly.com.au](http://www.coppermoly.com.au)

21<sup>st</sup> July 2025

ASX Code: COY

## Drilling Commenced at Fox Tail in EPM 27835

Coppermoly Limited (ASX: COY) (“COY” or the “Company”) is pleased to announce COYs second phase of exploration drilling at COY’s 100% owned Fox Tail prospects in the Mt Isa prospects in Cloncurry, Northwest Queensland – One of Australia’s most productive mineral provinces.

### HIGHLIGHTS

- The Board has approved commencement of 2,000 – 3,000m of reverse circulation drilling program
- COY has successfully completed Native Title Cultural Heritage Survey ahead of its second phase drill program of 4-6 Reverse Circulation holes at Fox Tail
- At Foxtails Prospect 4-6 RC holes target high IP chargeability anomaly that juxtaposes airborne Geotem anomaly within the Mount Norma Quartzite Formation of the Soldiers Cap Group.
- The RC program is expected to be completed in 2 to 3 weeks, with assays to be reported shortly thereafter.
- We look forward to providing updates on this drilling program over the next quarter

### COPPER VALLEY PROSPECT

Coppermoly Limited (ASX: COY) (“COY” or the “Company”) is pleased to announce the commencement of its second phase Reverse Circulation drilling program at the highly prospective copper-gold and silver lead Project in the Eastern Succession, Mount Isa Inlier, Northwest Queensland.

Drilling follows a review of our successful IP Sounding Survey and Ground Magnetism completed in October 2023<sup>1</sup>, which identified several significant Chargeability and Resistivity anomalies at those prospects (Fig 5).

At the Foxtails Prospect, the second phase drilling program consists of 4-6 RC holes targeting high IP and Ground Magnetic anomaly that juxtaposes airborne Geotem anomaly within the Mount Norma Quartzite Formation of the Soldiers Cap Group. The Mt Norma quartzite is a sequence which exposed a 1500 m-thick sequence of massive, swaley-hummocky and cross-bedded quartzite, laminated and rippled psammpelite and pelite, intercalated with meta-amphibolite. The first three holes were designed to test highly chargeability anomaly zone (Fig. 3). Once the initial three drill hole data has been collated and verified, a detailed review of all drillhole and assay information, in conjunction with geological modelling, will be completed to better understand the nature and extent of both the higher chargeability and high conductivity zone.

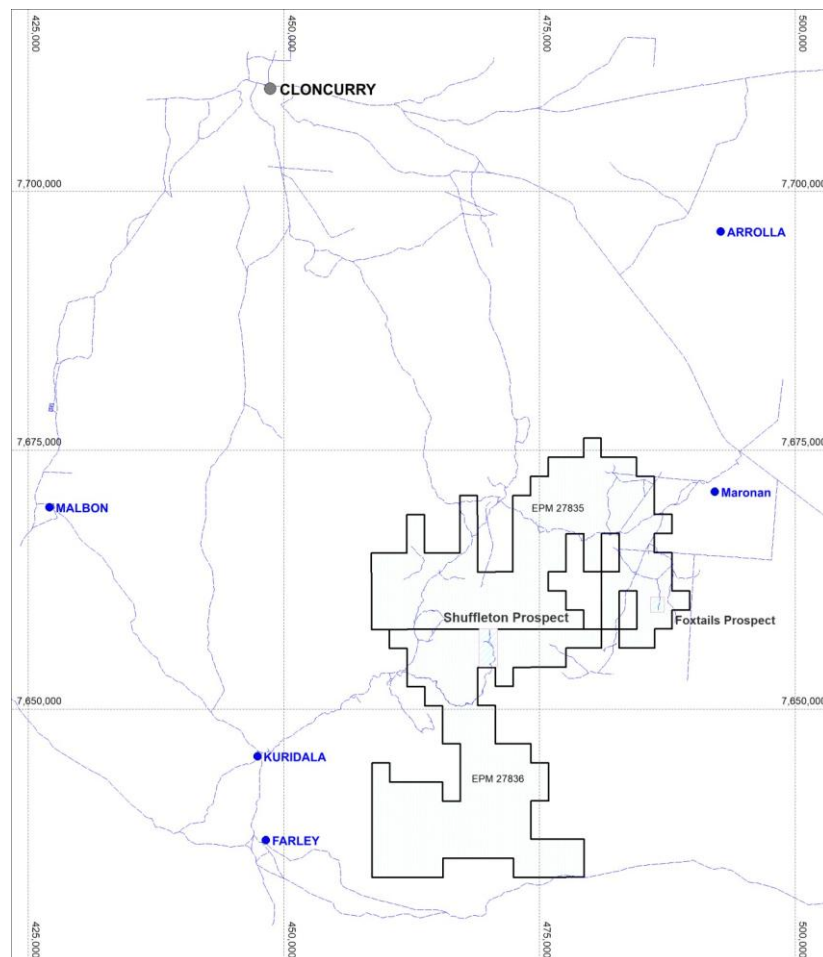
---

<sup>1</sup> Refer to ASX Announcement dated 3 November 2023



**Figure 1. Drill rig positioned at Fox Tail project EPM 27835**

Coppermoly Fox Tail project is within the same structural corridor as Maronan and Eloise Copper Project, separated by 10km



**Figure 2. Location of EPM 27835 relative to Cloncurry, QLD**



# PROPOSED RC HOLES AT FOX TAIL IN EPM 27835

FOX TAIL PROJECT - MARONAN - ELOISE COPPER PROJECTS

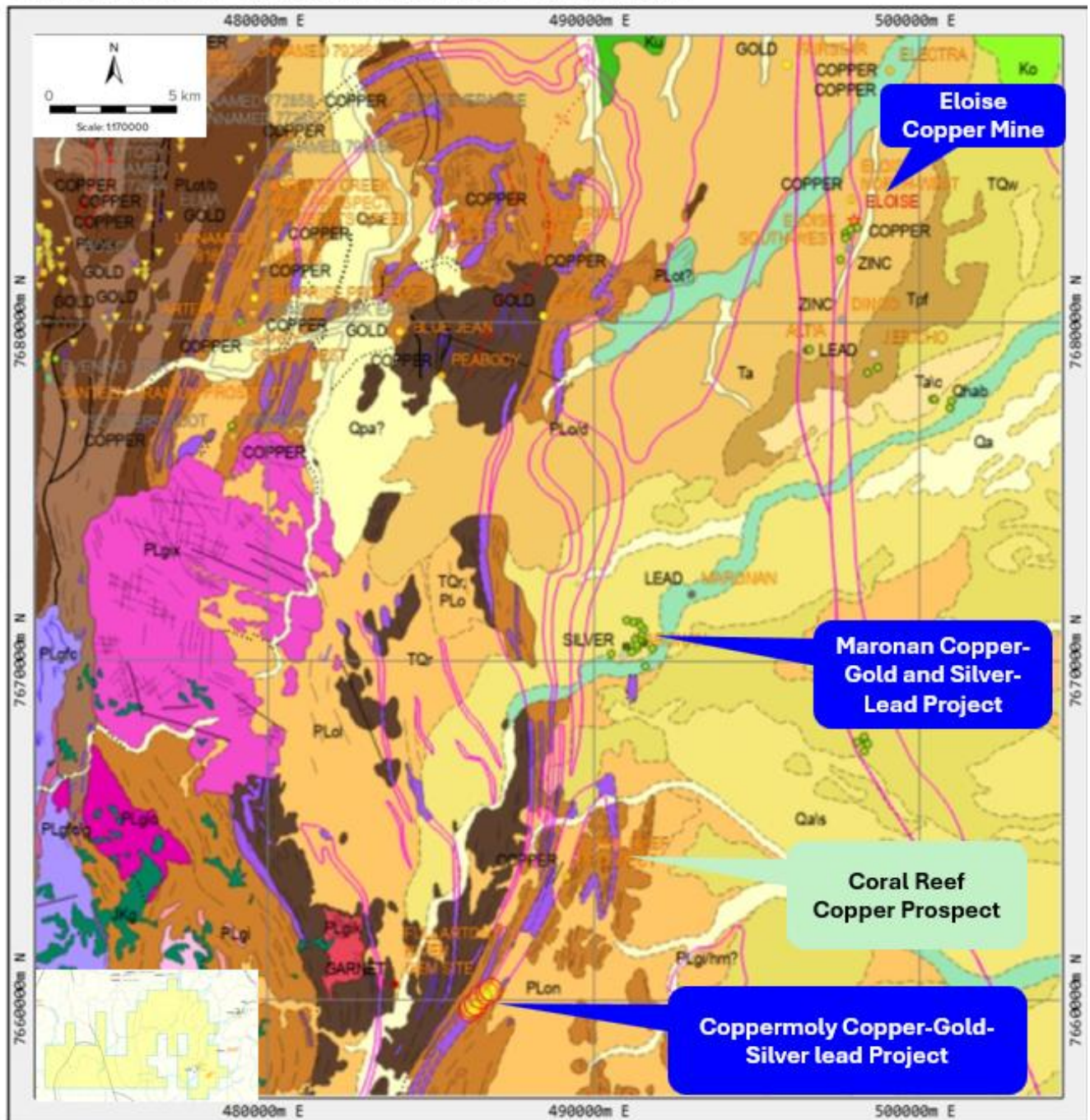


Figure 3. Proposed July 2025 drill holes (yellow filled circled) relative to Marona Copper-Gold and Silver- Lead project and Eloise Copper Mine. Insert is the tenement EPM 27835 with the proposed holes.



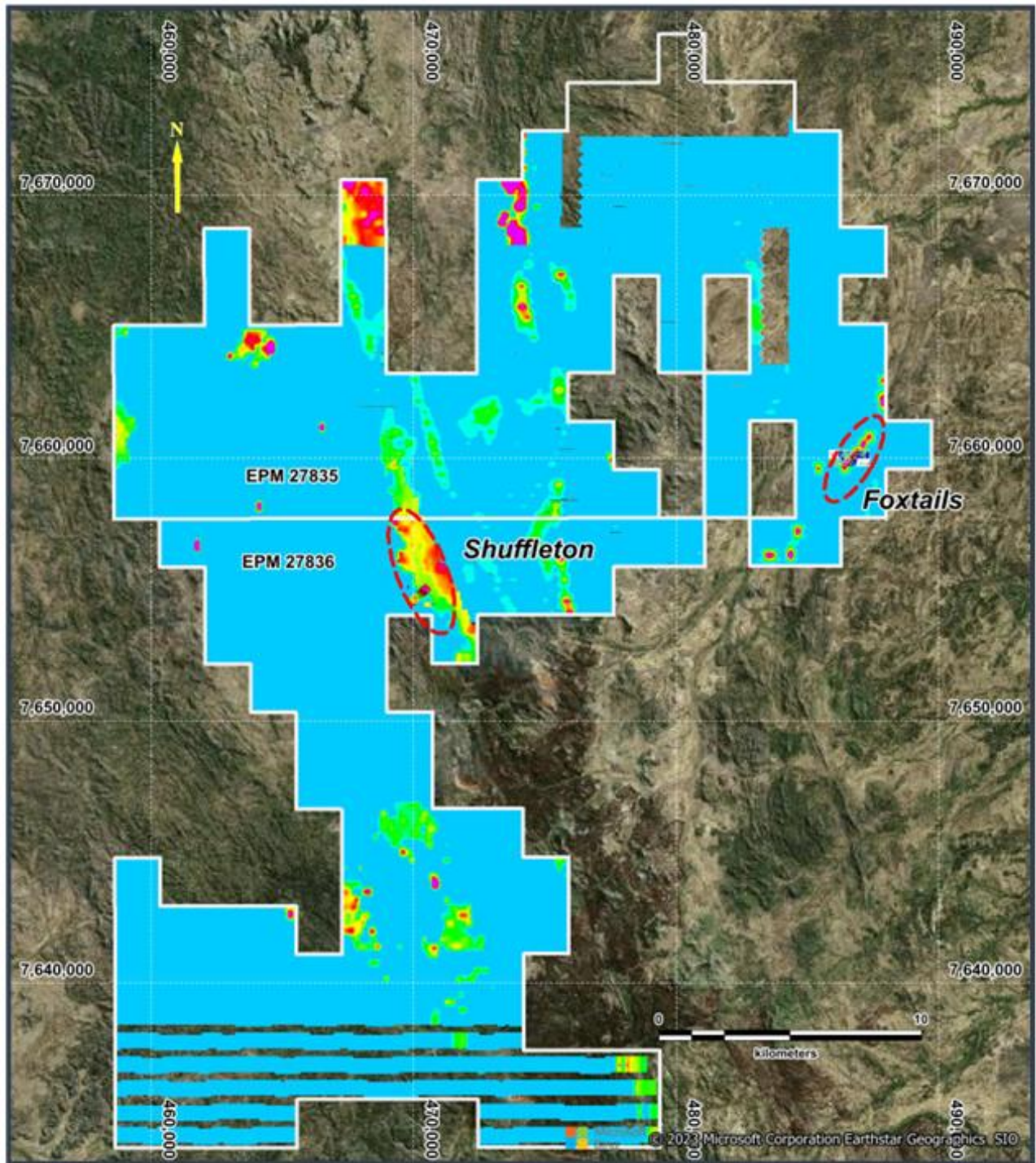
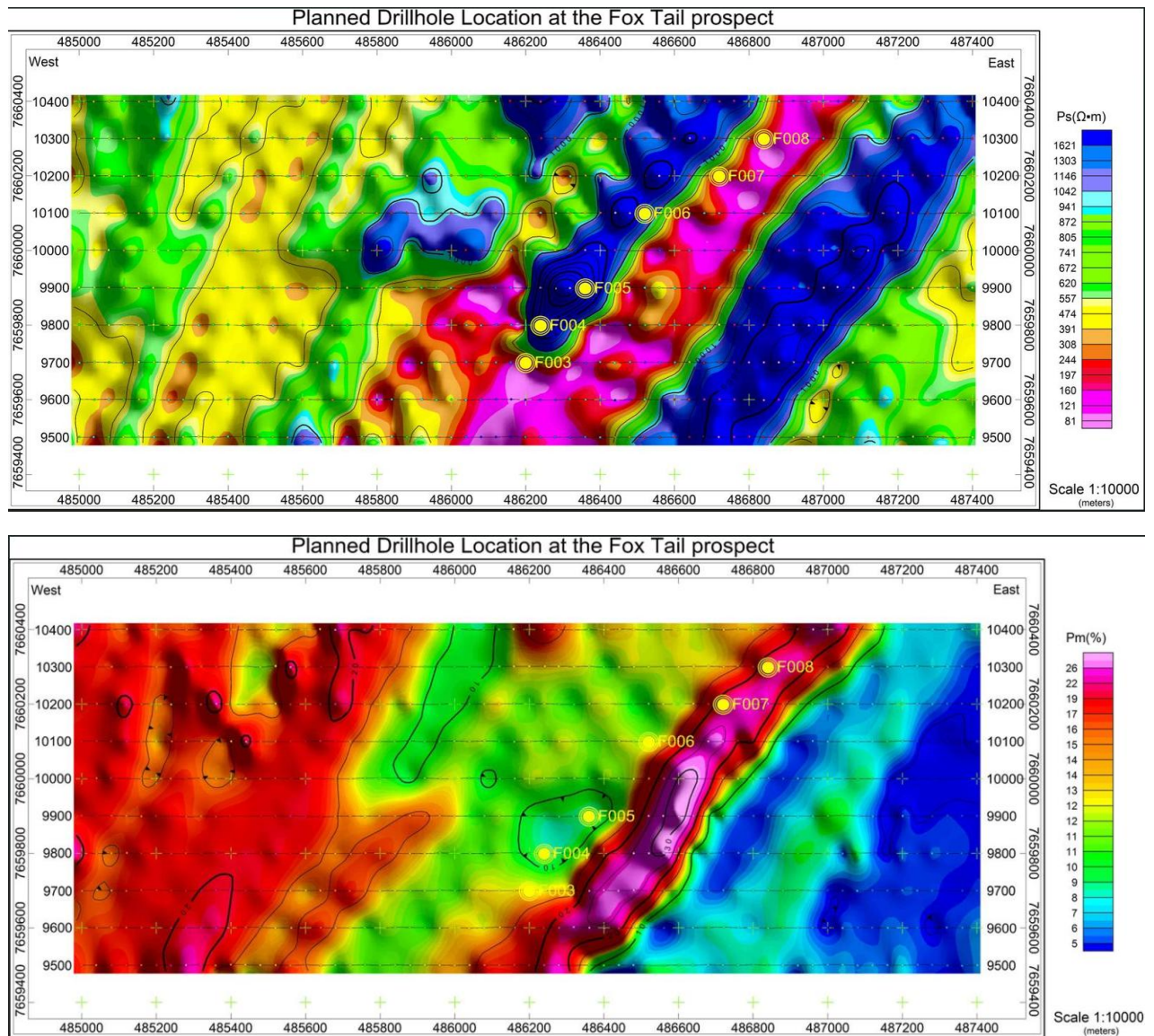


Figure 4. Location Map of the IP Sounding Survey at Shuffleton and Foxtails prospects within EPM27835 and EPM27836, Mt Isa, Northwest Queensland.



**Figure 5. Plan view of proposed holes (designed in 2023 and edited in 2025) based on Chargeability and Resistivity anomaly.**

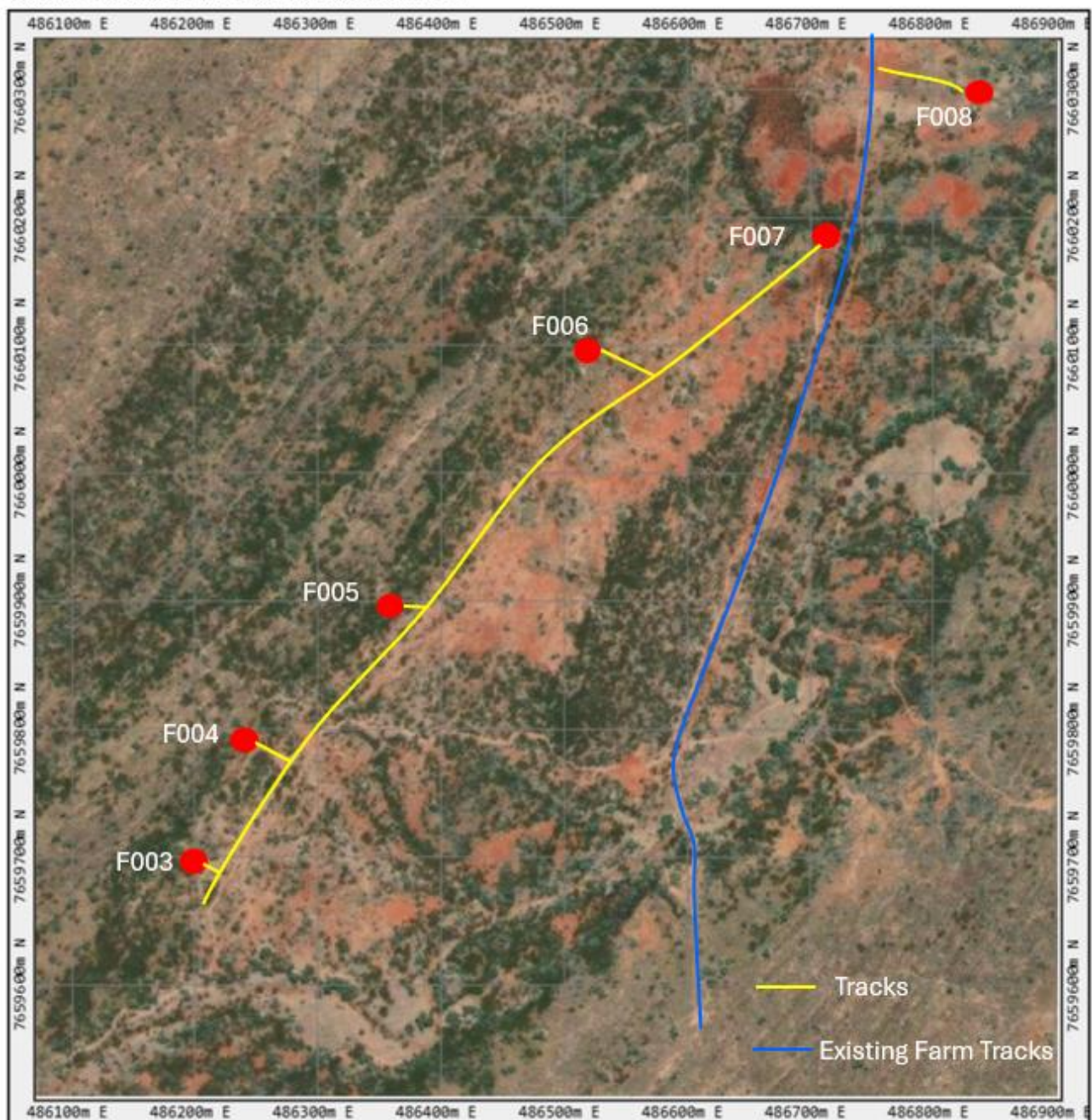


2025 FOX TAIL DESIGNED HOLE DETAILS						
Hole no	Type	Azimuth	Dip	EOH	North	East
F003	RC	90	-60	420	7659700	486200
F004	RC	90	-55	450	7659795	486242
F005	RC	90	-60	420	7659900	486360
F006	RC	90	-60	420	7660100	486520
F007	RC	90	-60	420	7660189	486715
F008	RC	90	-60	320	7660300	486840

**Table 1:** Details of proposed RC drill holes at Fox Tail EPM 27835

## COPPERQUEST PTY LTD

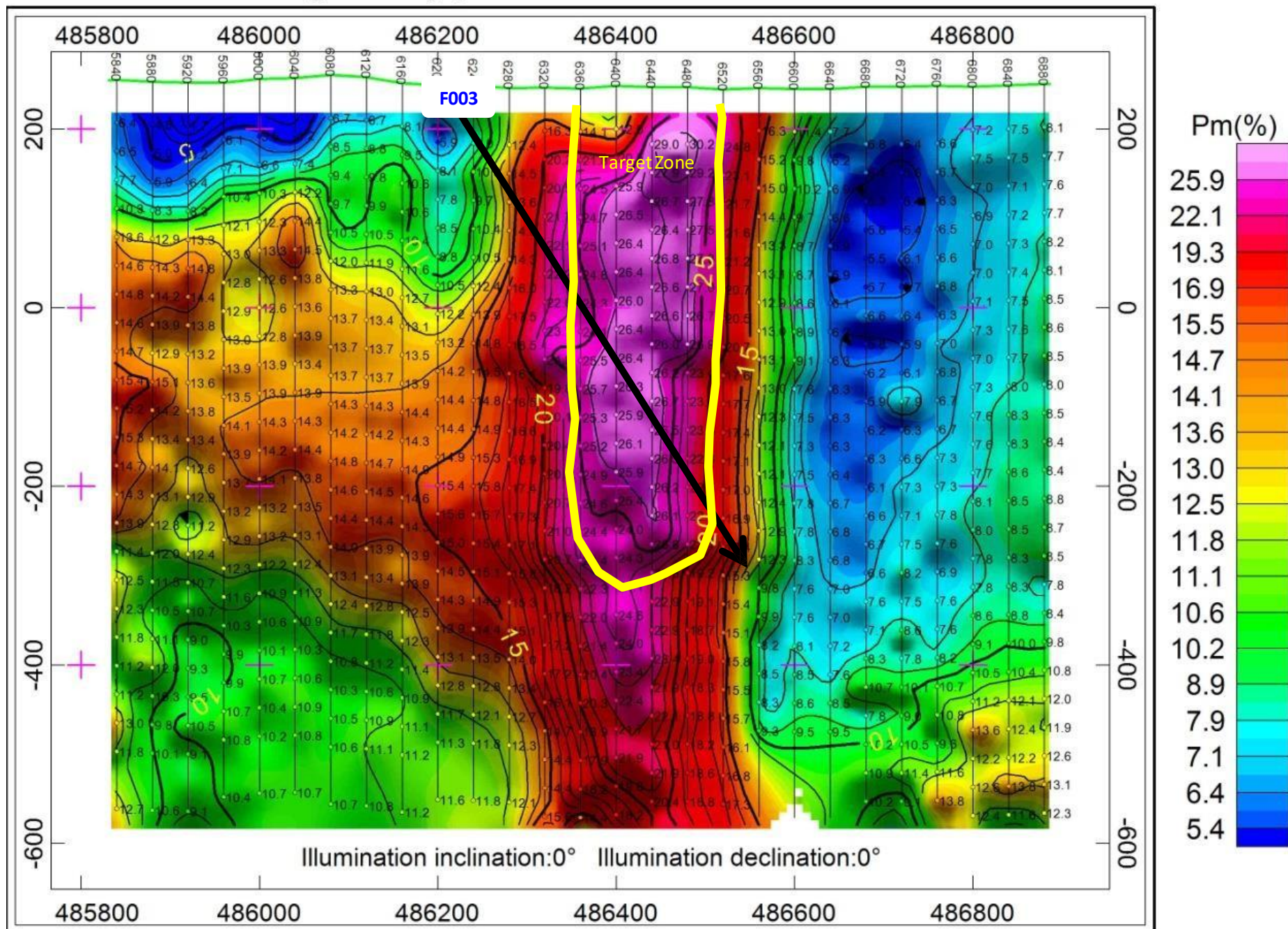
### 2025 FOX TAIL PROPOSED DRILL HOLES



**Figure 6.** Location of Proposed RC holes in Fox Tail EPM 27835

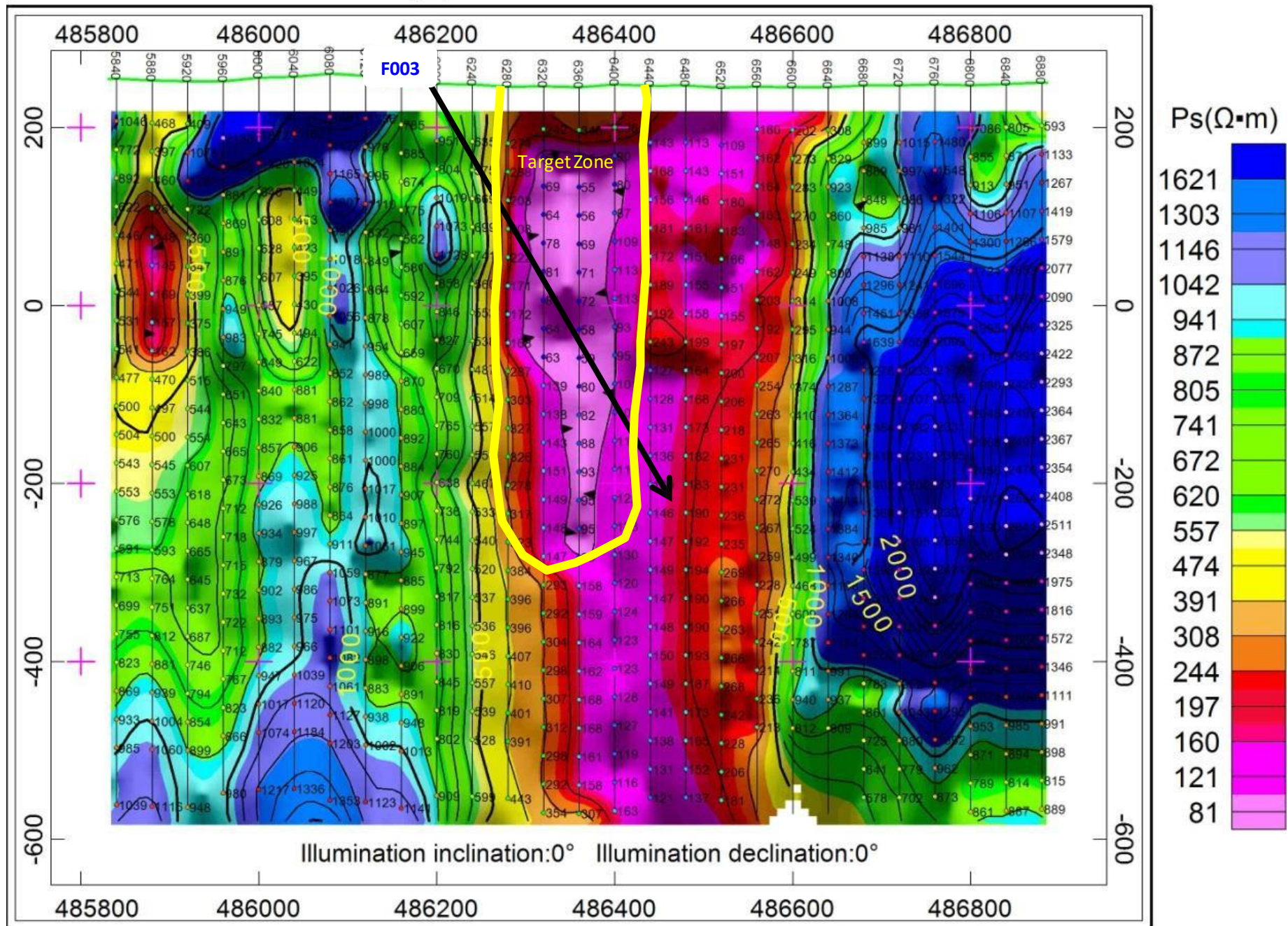


# Chargeability pseudosection of line 9700



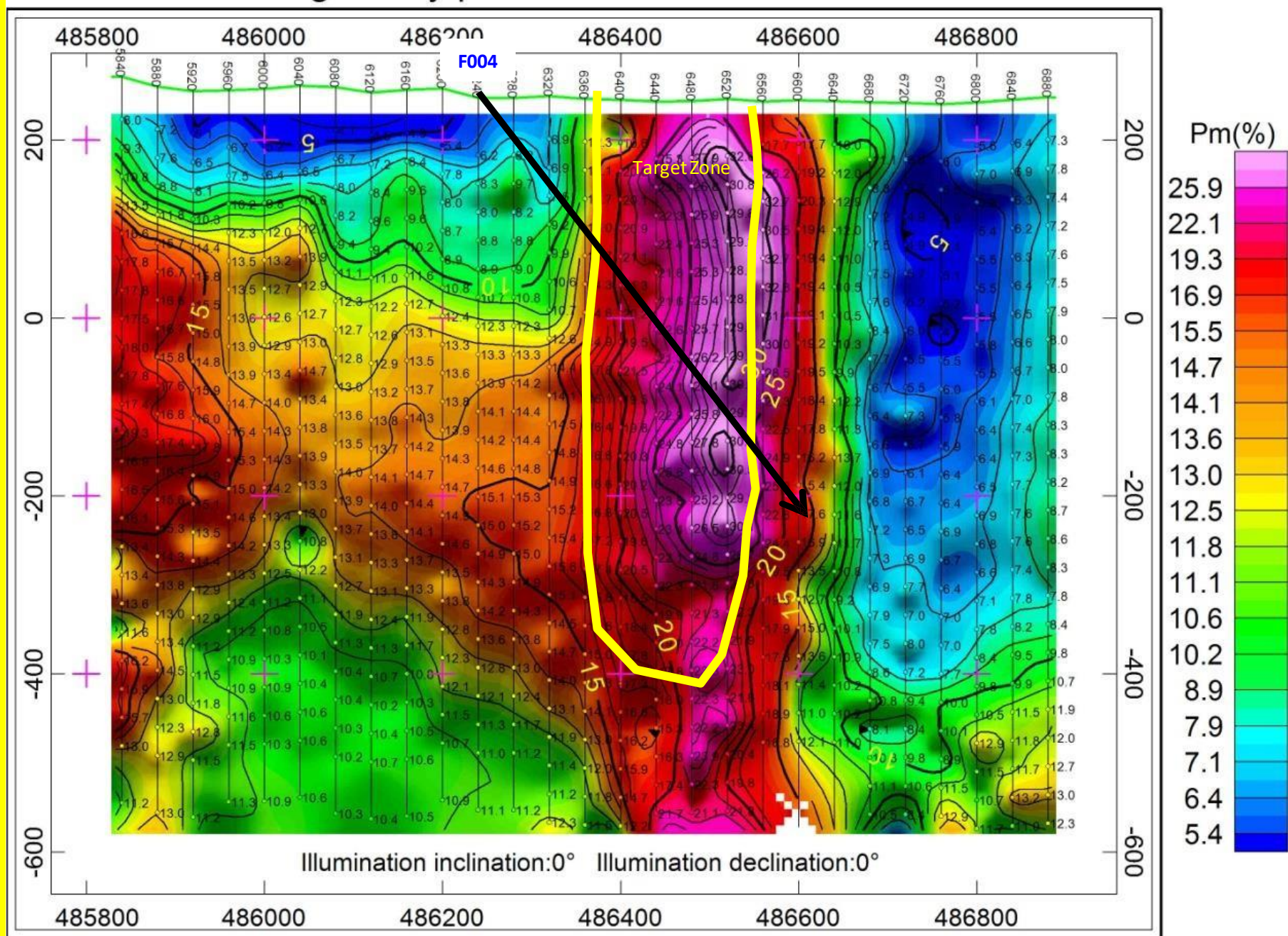


# Resistivity pseudosection of line 9700



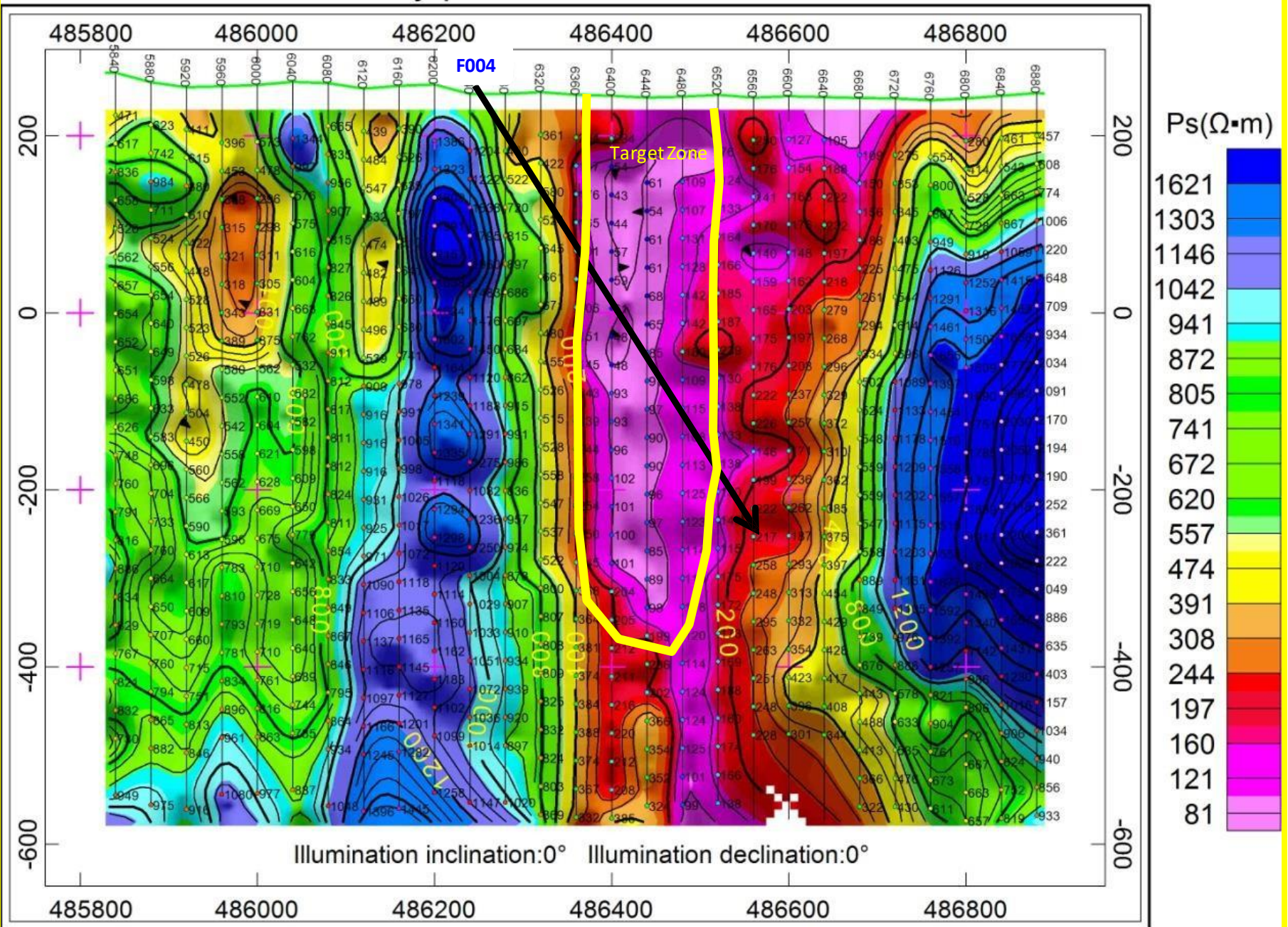


# Chargeability pseudosection of line 9800



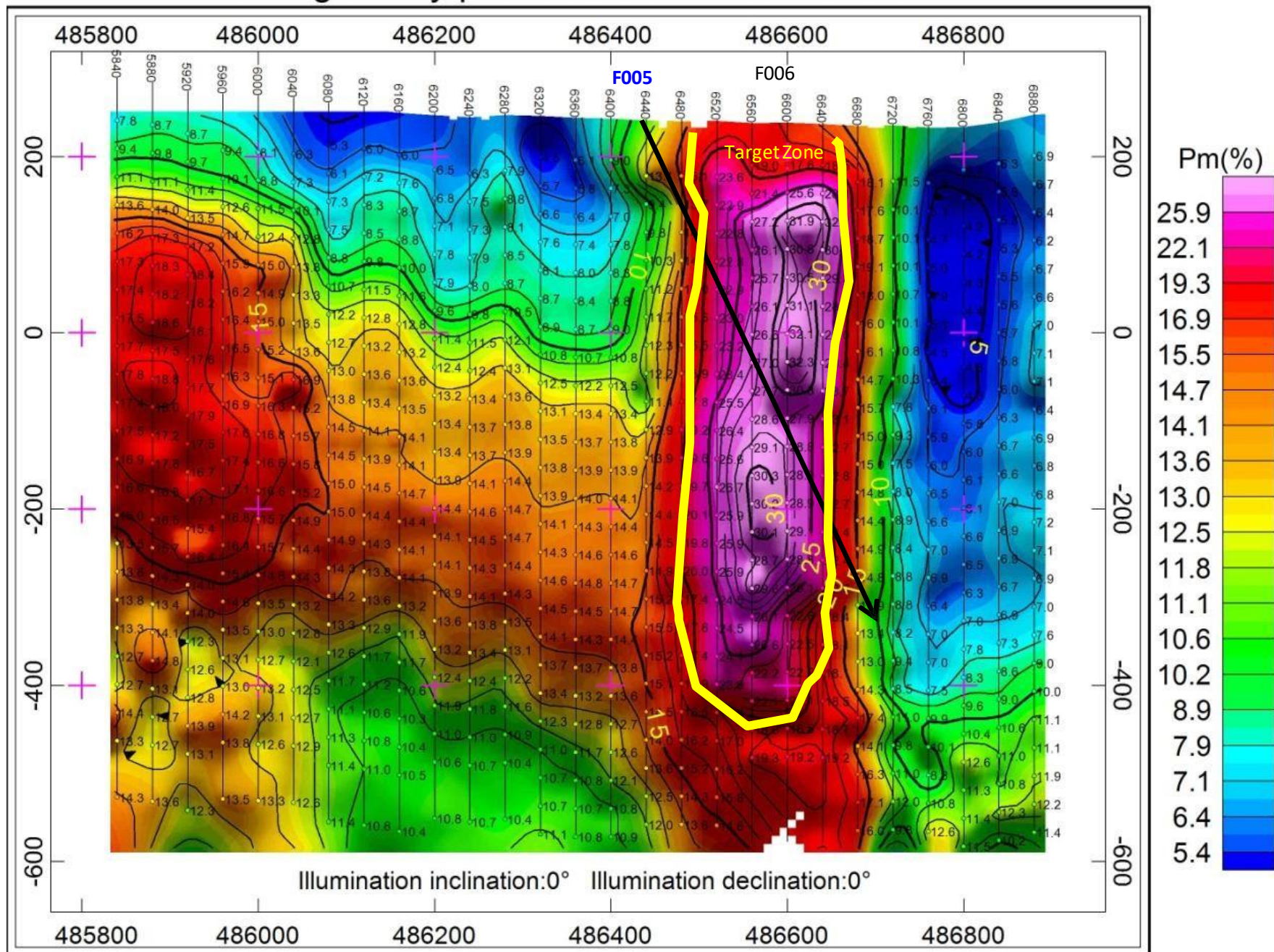


# Resistivity pseudosection of line 9800



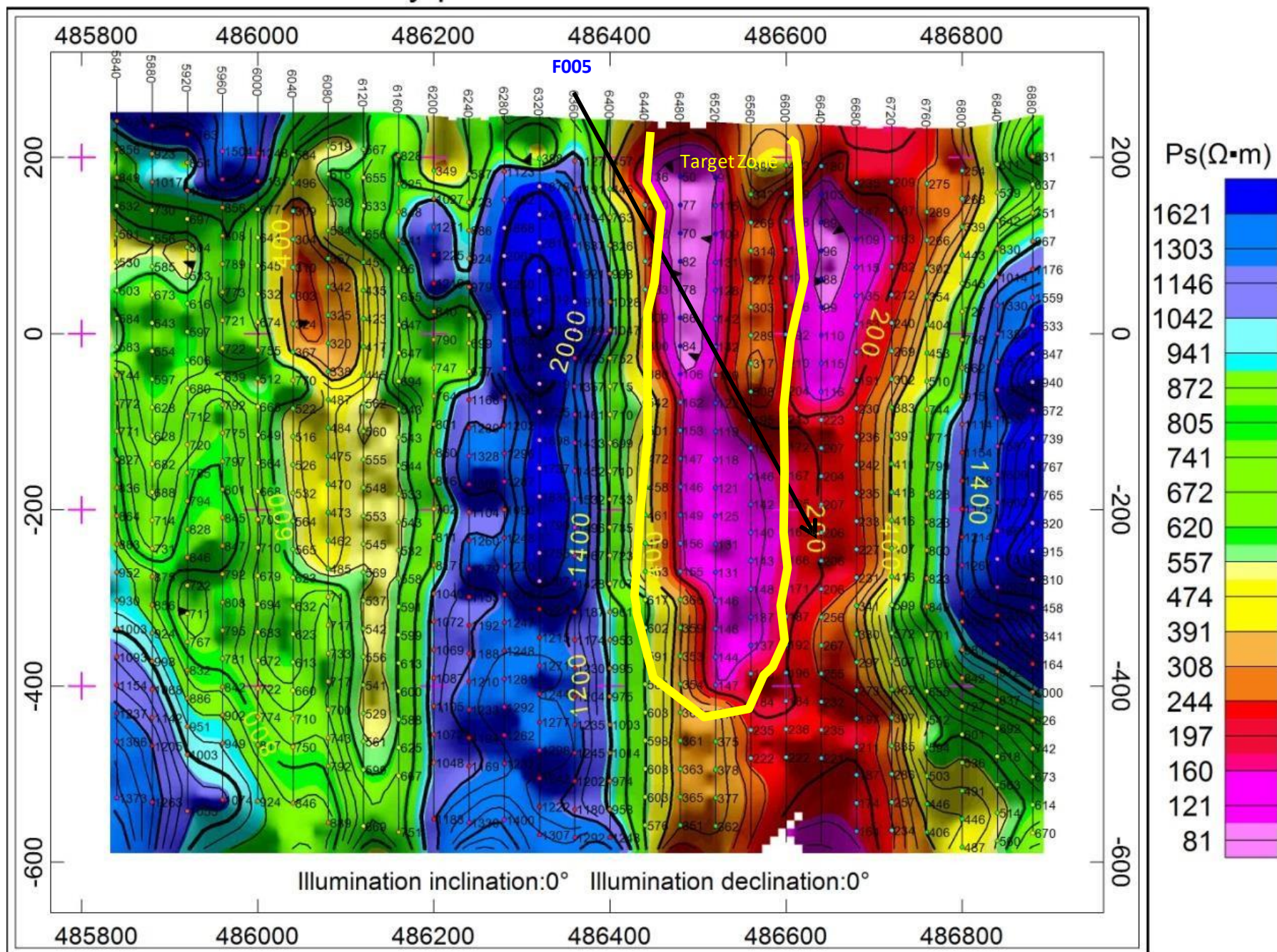


# Chargeability pseudosection of line 9900



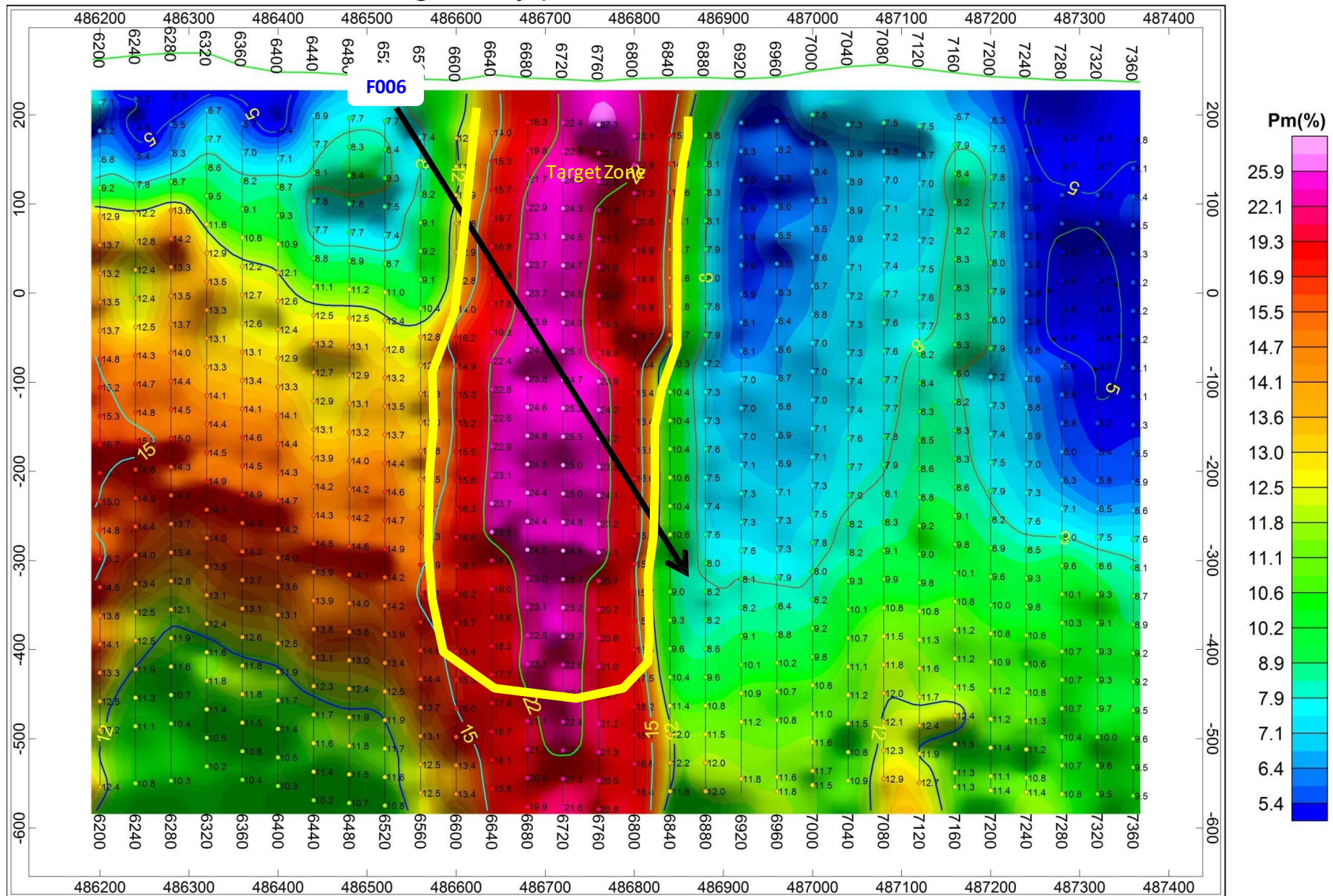


# Resistivity pseudosection of line 9900



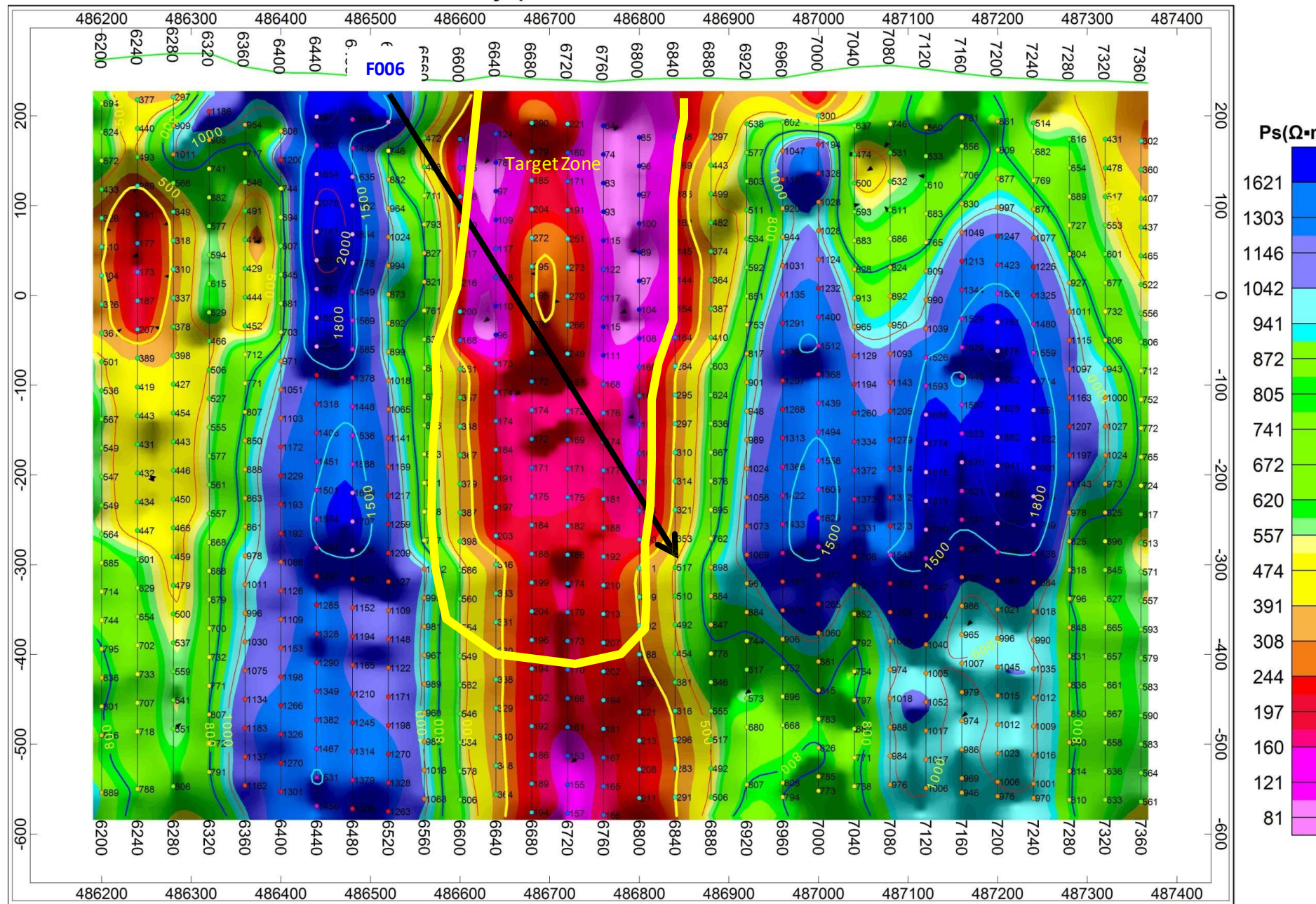


# Chargeability pseudosection of line 60100



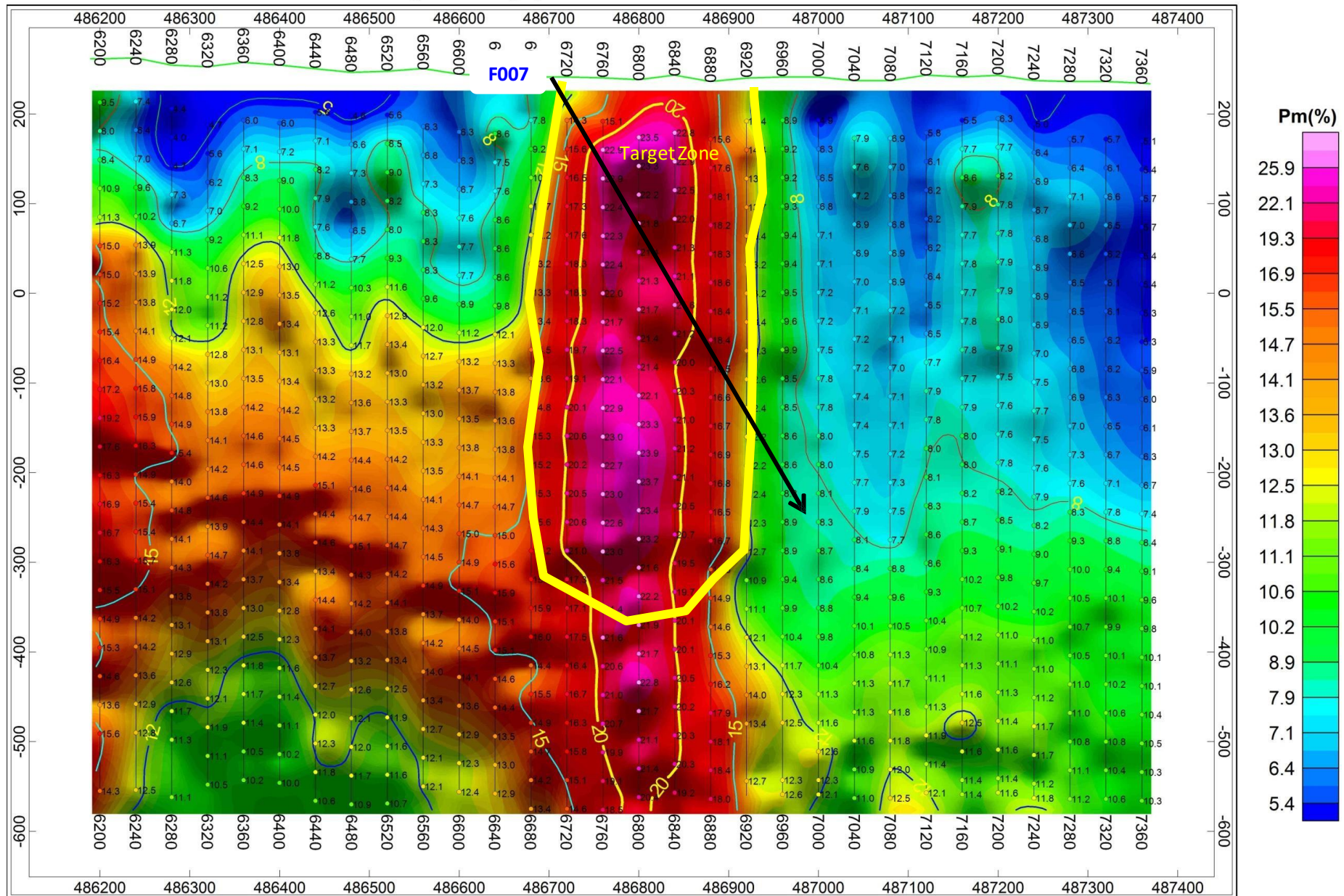


## Resistivity pseudosection of line 60100



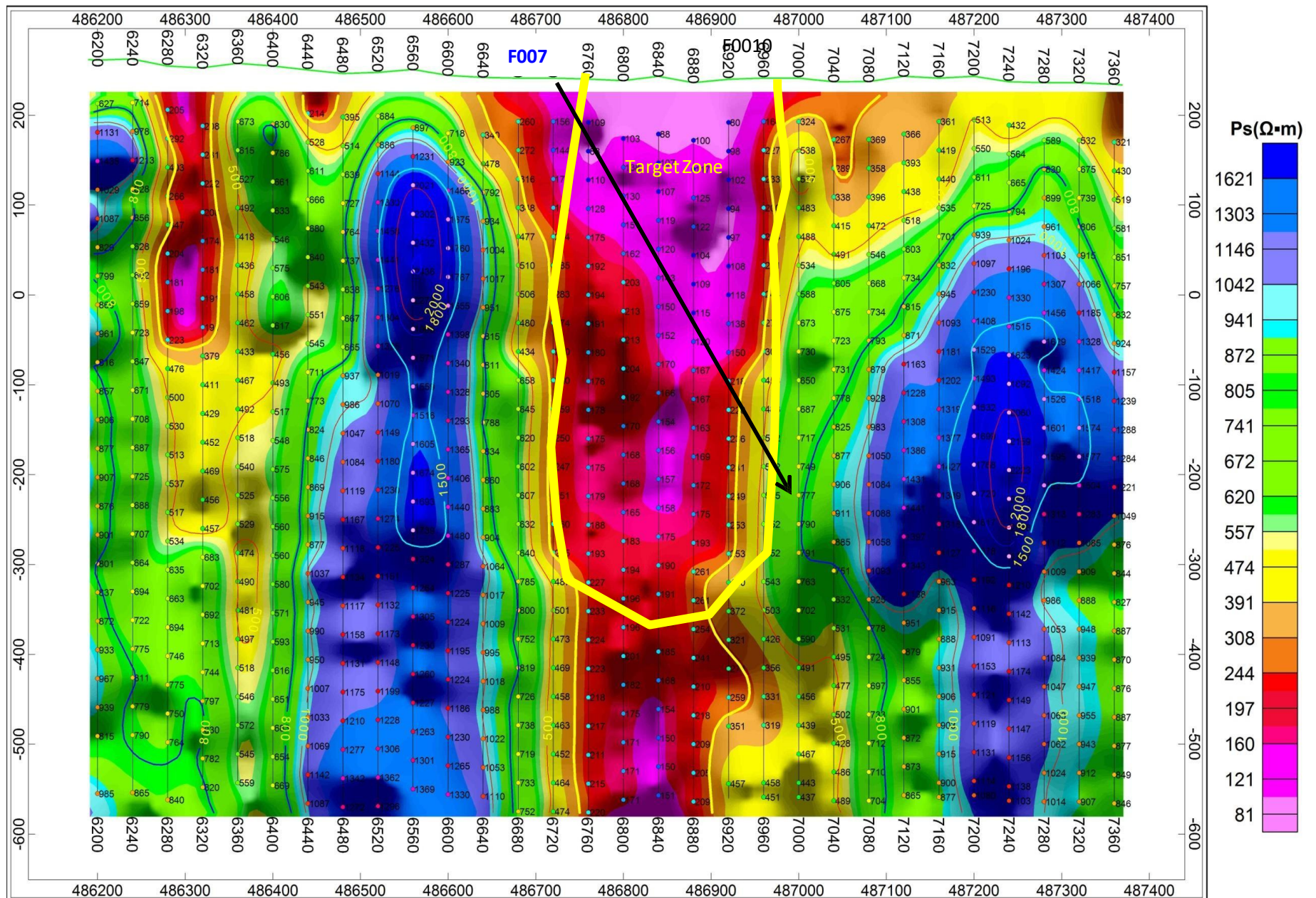


# Chargeability pseudosection of line 60200



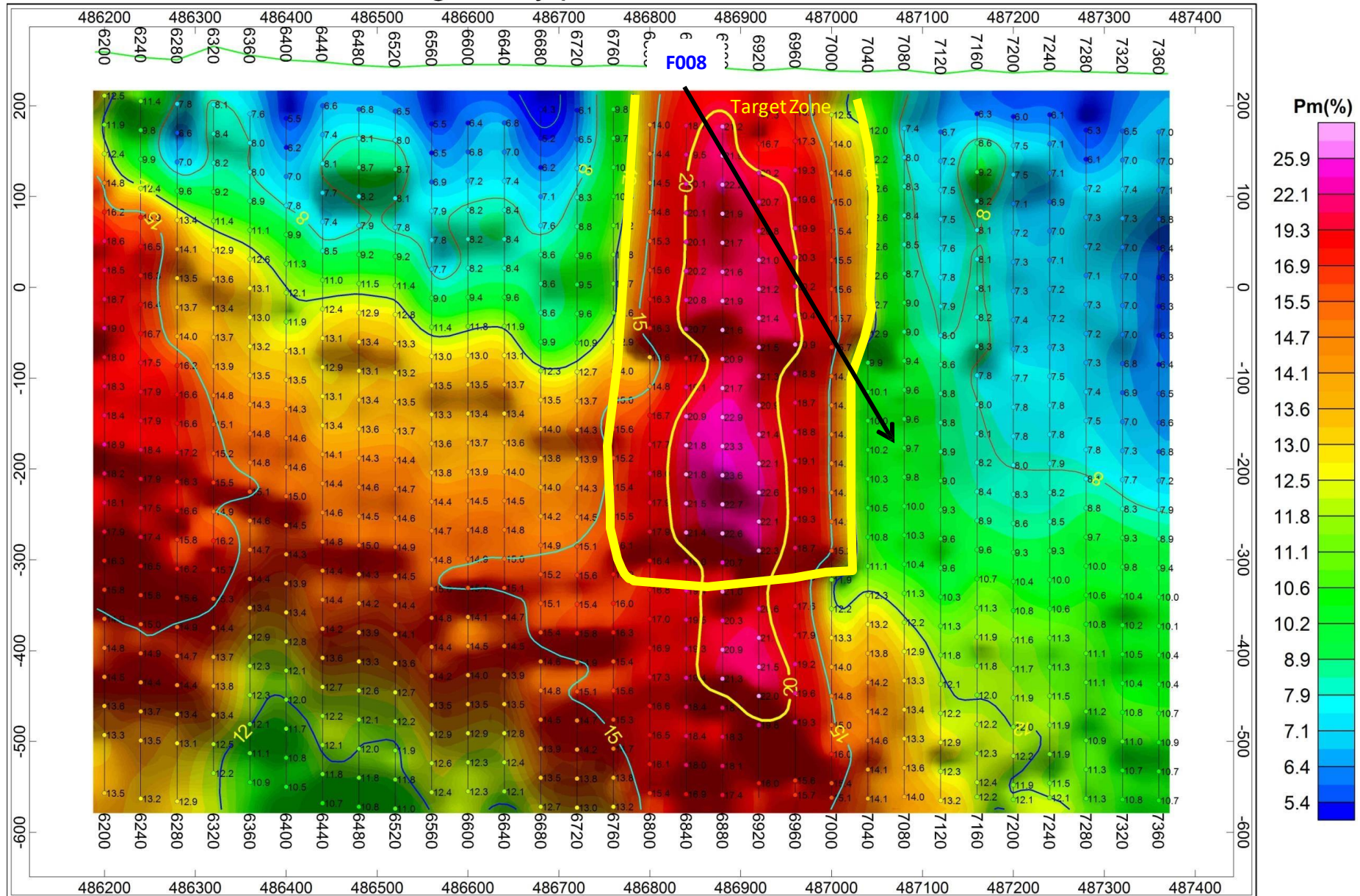


# Resistivity pseudosection of line 60200





# Chargeability pseudosection of line 60300





# Resistivity pseudosection of line 60300

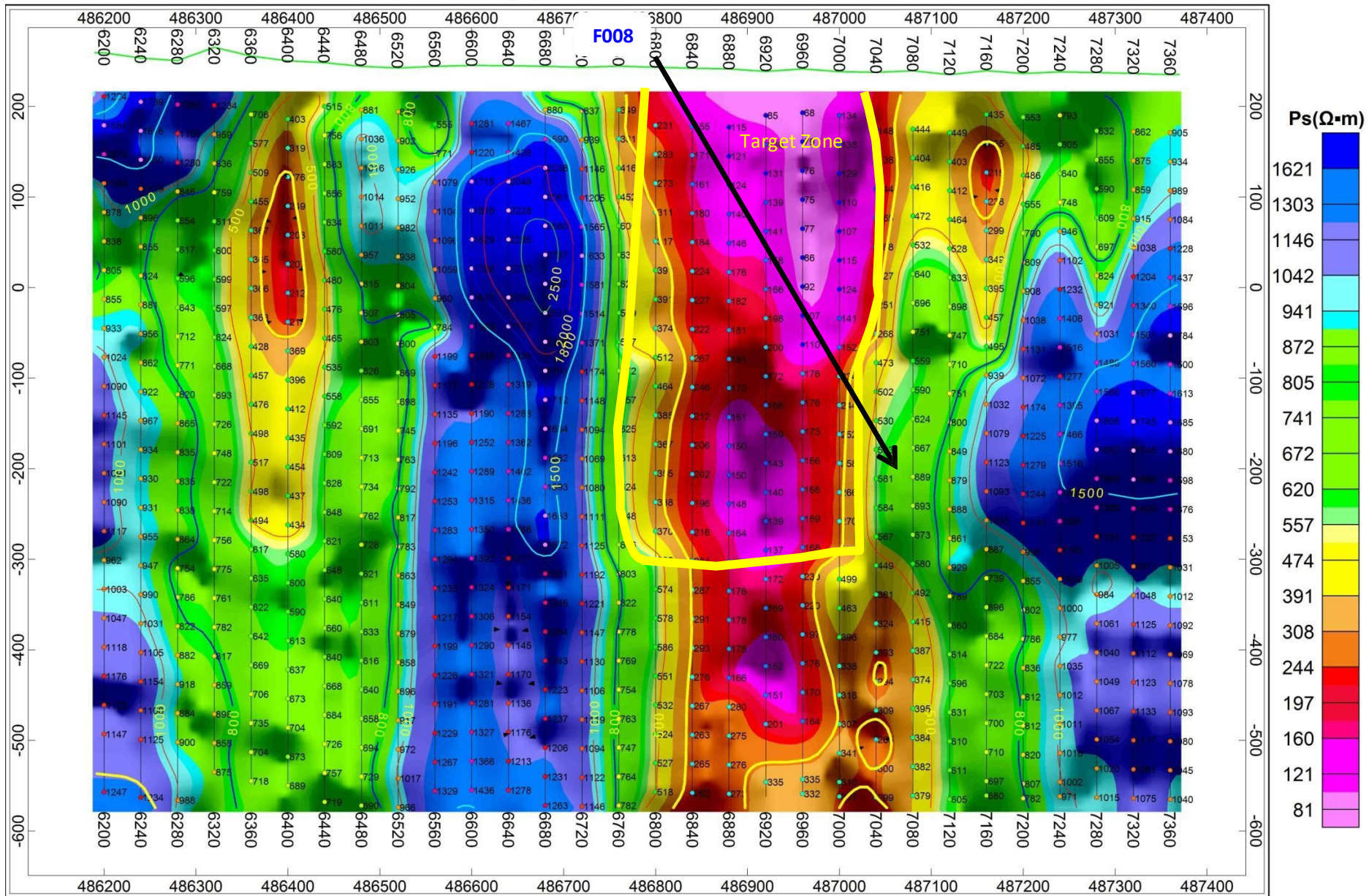


Figure 7. IP chargeability and Ground Magnetic anomalies for each section line, 9700 – 60300 (refer table 1)



This ASX announcement has been authorised for release by the Board of Directors. For further information please visit the Company's website at [www.coppermoly.com.au](http://www.coppermoly.com.au) or contact:

Quinn Lee

Chairperson

+61 (8) 6555 2950

[quinn@coppermoly.com.au](mailto:quinn@coppermoly.com.au)

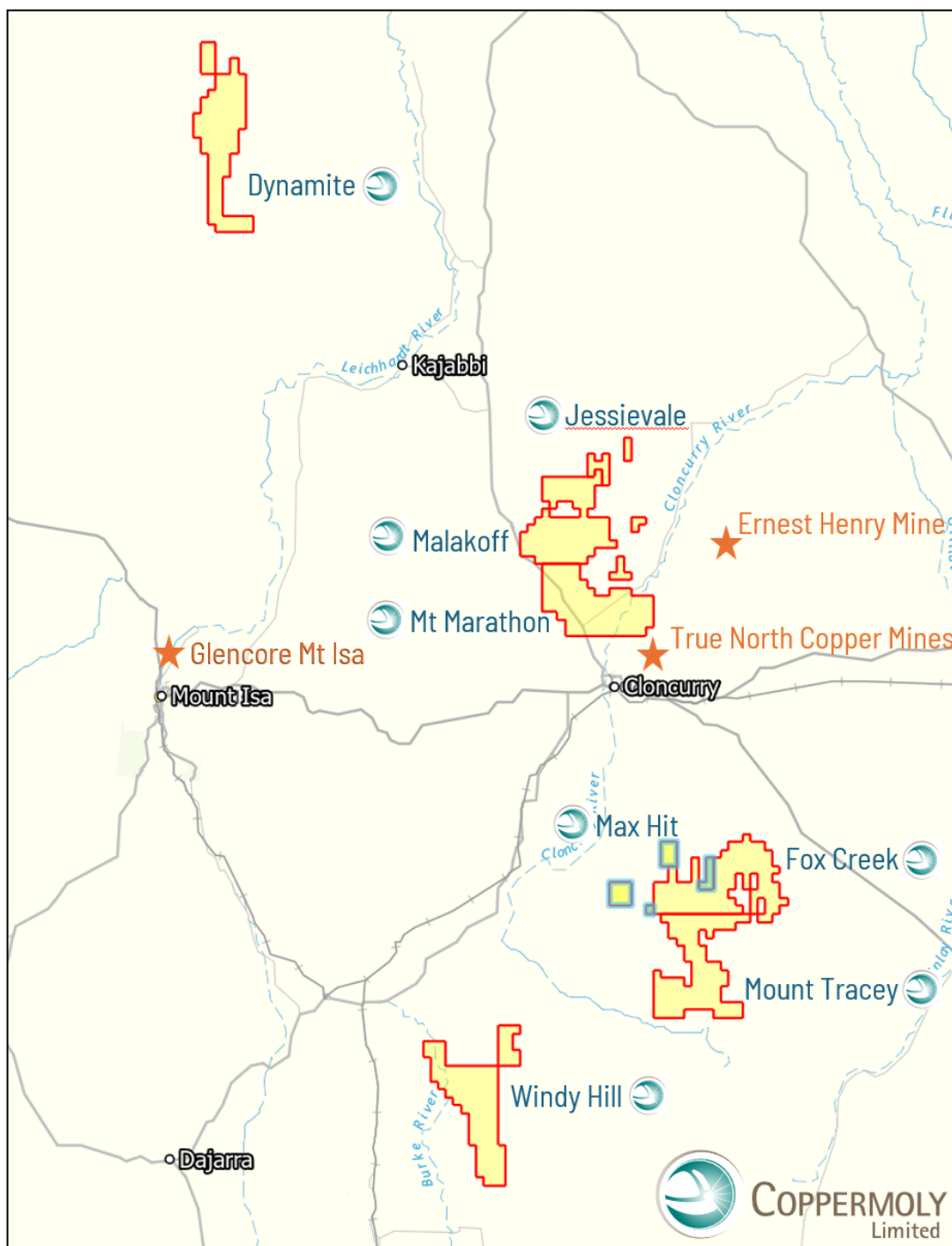


The Company confirms that it is not aware of any new information or data that materially affects the previously disclosed exploration results referenced in this announcement. Information included in the original market announcement dated 3 November 2023 and that the form and context in which the Competent Person's findings are presented have not been materially modified from the original market announcements.



## ABOUT COPPERMOLY LTD

Coppermoly Ltd is a mineral exploration and resource development company rapidly advancing an exciting portfolio of copper/gold/molybdenum exploration projects in the resource rich Mount Isa Region of QLD. The newly refreshed management and geological team are focused on the accelerated exploration program and resource definition of their high value QLD targets. The Mt Isa Inlier is highly prospective for iron oxide copper gold (IOCG) and shear hosted Cu +/- Au deposits.



[www.coppermoly.com.au](http://www.coppermoly.com.au)